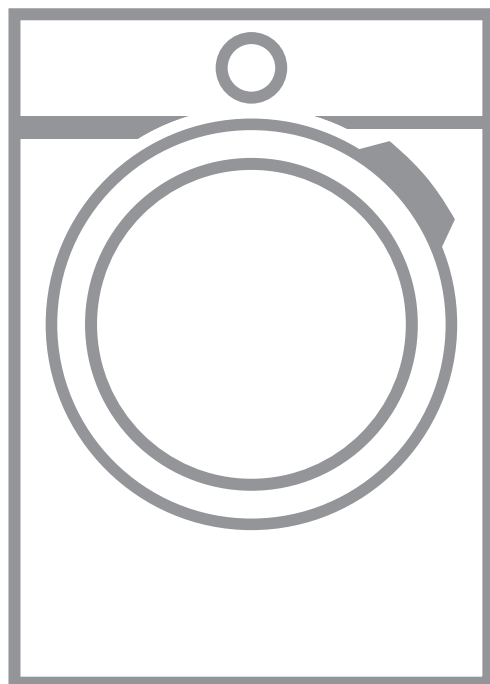



USER MANUAL



AEG

CONTENTS

1. SAFETY INFORMATION.....	3
2. SAFETY INSTRUCTIONS.....	5
3. PRODUCT DESCRIPTION.....	7
4. TECHNICAL DATA.....	9
5. INSTALLATION.....	9
6. THE WATER SOFTENER (SOFT WATER).....	14
7. CONTROL PANEL.....	18
8. FIRST TIME START-UP.....	18
9. TOUCH SCREEN.....	20
10.  WI-FI CONNECTIVITY SETUP.....	22
11. BEFORE FIRST USE.....	24
12. PROGRAMS	25
13. OPTIONS.....	30
14. DAILY USE.....	34
15. SETTINGS.....	40
16. HINTS AND TIPS.....	43
17. CARE AND CLEANING.....	45
18. TROUBLESHOOTING.....	50
19. ACCESSORIES.....	55
20. WARRANTY	56



IMPORTANT INFORMATION THAT MAY IMPACT YOUR MANUFACTURER'S WARRANTY

Adherence to the directions for use in this manual is extremely important for health and safety. Failure to strictly adhere to the requirements in this manual may result in personal injury, property damage and affect your ability to make a claim under the AEG manufacturer's warranty provided with your product. Products must be used, installed and operated in accordance with this manual. You may not be able to claim on the AEG manufacturer's warranty in the event that your product fault is due to failure to adhere to this manual.

FOR PERFECT RESULTS

Thank you for choosing this AEG product. We have created it to give you impeccable performance for many years, with innovative technologies that help make life simpler features you might not find on ordinary appliances. Please spend a few minutes reading to get the very best from it.

Visit our website for:



Get usage advice, brochures, trouble shooter, service information:
www.aeg.com



Register your product for better service:
www.registeraeg.com

CUSTOMER CARE AND SERVICE

Always use original spare parts.

When contacting our Authorised Service Centre, ensure that you have the following data available: Model, PNC, Serial Number.

The information can be found on the rating plate.

 Warning / Caution-Safety information

 General information and tips

 Environmental information

Subject to change without notice.

1. SAFETY INFORMATION

Before the installation and use of the appliance, carefully read the supplied instructions. The manufacturer is not responsible for any injuries or damage that are the result of incorrect installation or usage. Always keep the instructions in a safe and accessible location for future reference.

1.1 Children and vulnerable people safety

- This appliance can be used by children aged from 8 years and above and persons with reduced physical, sensory or mental capabilities or lack of experience and knowledge if they have been given supervision or instruction concerning the use of the appliance in a safe way and understand the hazards involved.
- Children between 3 and 8 years of age and persons with very extensive and complex disabilities shall be kept away from the appliance unless continuously supervised.
- Children of less than 3 years of age should be kept away from the appliance unless continuously supervised.
- Do not let children play with the appliance.
- Keep all packaging away from children and dispose of it appropriately.
- Keep detergents away from children.
- Keep children and pets away from the appliance when the door is open.
- Children shall not carry out cleaning and user maintenance of the appliance without supervision.

1.2 General Safety

- Do not change the specification of this appliance.
- This appliance is intended to be used in household and similar applications such as:
 - staff kitchen areas in shops, offices and other working environments;
 - farm houses;
 - by clients in hotels, motels, bed & breakfast and other residential type environments;
 - areas for communal use in blocks of flats or in launderettes.
- Do not exceed the maximum load of 10 kg (refer to the "Program chart" chapter).

- The operating water pressure at the water entry point from the outlet connection must be between 0.5 bar (0.05 MPa) and 8 bar (0.8 MPa).
- The ventilation opening in the base must not be covered by a carpet, mat, or any floor covering.
- The appliance must be connected to the water mains using the new supplied hose sets, or other new hose sets supplied by the Authorised Service Centre.
- Old hose sets must not be reused.
- If the mains power supply cable is damaged, it must be replaced by the manufacturer, its Authorised Service Centre or similarly qualified persons to avoid an electrical hazard.
- Before any maintenance operation, deactivate the appliance and disconnect the mains plug from the socket.
- Do not use high pressure water sprays and/or steam to clean the appliance.
- Clean the appliance with a moist cloth. Use only neutral detergents. Do not use abrasive products, abrasive cleaning pads, solvents or metal objects.

2. SAFETY INSTRUCTIONS

2.1 Installation



The installation must comply with relevant national regulations.

- Remove all the packaging and the transit bolts.
- Keep the transit bolts in a safe place. If the appliance is to be moved in the future they must be reattached to lock the drum to prevent an internal damage.
- Always take care when moving the appliance as it is heavy. Always use safety gloves and enclosed footwear.
- Follow the installation instructions supplied with the appliance.
- Do not install or use a damaged appliance.
- Do not install or use the appliance where the temperature can be less than 0°C or where it is exposed to the weather.
- The floor area on which the appliance is to be installed must be flat, stable, heat resistant and clean.
- Make sure that there is air circulation between the appliance and the floor.
- Do not install the appliance directly above a floor drain.
- Adjust the feet to have the necessary space between the appliance and the flooring.
- Do not install the appliance where the appliance door cannot be fully opened.
- Do not put a container to collect possible water leakage under the appliance. Contact the Authorised Service Centre to ensure which accessories can be used.

2.2 Electrical connection



WARNING!

Risk of fire and electric shock.

- The appliance must be earthed.
- Always use a correctly installed shockproof socket.
- Make sure that the parameters on the rating plate are compatible with the electrical ratings of the mains power supply.
- Do not use multi-plug adapters and extension cables.
- Make sure not to cause damage to the mains plug and to the mains cable. Should the mains cable need to be replaced, this must be carried out by our Authorised Service Centre.
- Connect the mains plug to the mains socket only at the end of the installation. Make sure that there is access to the mains plug after the installation.
- Do not touch the mains cable or the mains plug with wet hands.
- Do not pull the mains cable to disconnect the appliance. Always pull the mains plug.

2.3 Water connection

- Do not cause damage to the water hoses.
- Before connection to new pipes, pipes not used for a long time, where repair work has been carried out or new devices fitted (water meters, etc.), let the water flow until it is clean and clear.
- Ensure that there are no visible water leaks during and after the first use of the appliance.
- Do not use an extension hose if the inlet hose is too short. Contact the Authorised Service Centre for the replacement of the inlet hose.
- When unpacking the appliance, it is possible to see water flowing from the drain hose. This is due to the testing of the appliance with the use of water in the factory.
- You can extend the drain hose to maximum 400 cm. Contact the

Authorised Service Centre for the other drain hose and the extension.

- Make sure that there is access to the tap after the installation.

2.4 Use



WARNING!

Risk of injury, electric shock, fire, burns or damage to the appliance.

- Follow the safety instructions on the detergent packaging.
- Do not put flammable products or items that are wet with flammable products in, near or on the appliance.
- Do not wash fabrics which are heavily soiled with oil, grease or other greasy substances. It can damage rubber parts of the washing machine. Prewash such fabrics by hand before loading them into the washing machine.
- Do not touch the glass door while a program operates. The glass can get hot.
- Make sure that all metal objects are removed from the laundry.

2.5 Internal lighting



WARNING!

Risk of injury.

- Concerning the lamp(s) inside this product and spare part lamps sold separately: These lamps are intended to withstand extreme physical conditions in household appliances, such as temperature, vibration, humidity, or are intended to signal information about the operational status of the appliance. They are not intended to be used in other applications and are not suitable for household room illumination.
- Visible LED radiation, do not look directly into the beam.
- To replace the internal lighting, contact the Authorised Service Centre.

2.6 Service

- To repair the appliance contact the Authorised Service Centre.

- Use original spare parts only.

2.7 Disposal



WARNING!

Risk of injury or suffocation.

- Disconnect the appliance from the mains electrical and water supplies.
- Cut off the mains electrical cable close to the appliance and dispose of it.

- Remove the door catch to prevent children or pets from becoming trapped in the drum.
- Dispose of the appliance in accordance with local requirements for the disposal of Waste Electrical and Electronic Equipment (WEEE).

3. PRODUCT DESCRIPTION

3.1 Special features

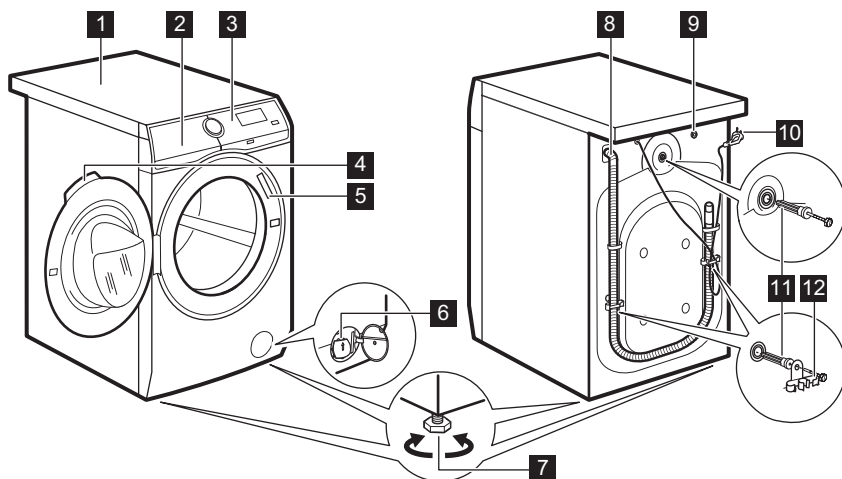
Your new washing machine meets all modern requirements for an effective treatment of laundry with low water, energy and detergent consumption and proper care of fabric.

- The interactive touch screen display makes the setting and the use of the appliance more immediate and agreeable.
- The Wi-Fi connection and Remote Start enable you to start a cycle, to interact with your washing machine and to check the washing cycle status in remote control.
- The SoftWater Technology acts as water softener and removes harsh minerals from the inlet water and supplies soft water for the washing. Wash after wash, fabric stiffness, shrinkage and colour fading are prevented.
- The Oko-Mix technology has been designed to protect the fabric fibres thanks to different pre-mixing phases that dissolves first the detergent and

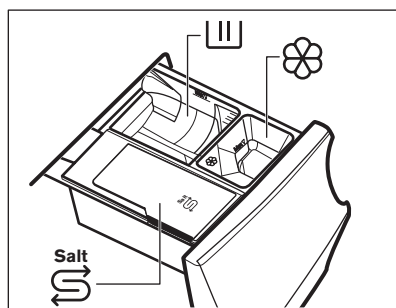
then fabric softener in the water before they are distributed in the laundry. So every fibre is reached and cared for.

- Thanks to the Weight Sensors the appliance can detect the weight of your load and advise on how much detergent you need to achieve the best results without waste.
- The ProSense technology adjusts automatically the program duration to the laundry in the drum to achieve perfect washing results in the minimum possible time.
- The steam has a quick and easy way to refresh the clothes. The gentle steam programs remove odours and reduce creases in dry fabrics so they need little ironing. The Plus Steam option, finishes every cycle with gentle steam that relaxes the fibres and reduces fabric creasing. Ironing will be easier!
- The Stains option pre-treats stubborn stains optimizing the effectiveness of the stain remover.

3.2 Appliance overview




- 1** Worktop
- 2** Detergent dispenser and salt compartment
- 3** Control panel
- 4** Door handle
- 5** Rating plate
- 6** Internal light
- 7** Drain pump filter
- 8** Feet for levelling the appliance
- 9** Drain hose
- 10** Inlet hose connection
- 11** Mains cable
- 12** Transit bolts
- 13** Hose support



III Compartment for washing phase: powder detergent, stain remover.

i When using liquid detergent, make sure that the special container for liquid detergent is inserted. Refer to 'Filling the detergent and additives' in 'Daily Use' chapter.

 Compartment for liquid additives (fabric conditioner, starch).

3.3 Detergent dispenser and salt compartment

i Always follow the instructions that you find on the packaging of the detergent products. Anyway, we recommend not to exceed the maximum indicated level in each compartment (**MAX**).



Compartment for salt.



Read carefully 'The Water Softener technology (Soft Water)'.



After a washing cycle, if necessary, remove any detergent residue from the detergent dispenser.

MAX Maximum level for detergent/ additives quantity.



When selecting a prewash phase, put the detergent/ additive in a dosing ball inside the drum.

4. TECHNICAL DATA

Dimension	Width/ Height/ Depth/ Total depth	600 mm/ 850 mm/ 630 mm/ 660 mm
Electrical connection	Voltage	220 - 240 V
	Overall power	2200 W
	Fuse	10 A
	Frequency	50 Hz
Level of protection against ingress of solid particles and moisture ensured by the protective cover, except where the low voltage equipment has no protection against moisture		IPX4
Water supply pressure	Minimum	0.5 bar (0.05 MPa)
	Maximum	8 bar (0.8 MPa)
Water supply ¹⁾		Cold water
Maximum Load	Cotton	10 kg
Spin Speed	Maximum	1600 rpm

¹⁾ Connect the water inlet hose to a water tap with a 3/4" thread.

5. INSTALLATION



WARNING!
Refer to Safety chapters.



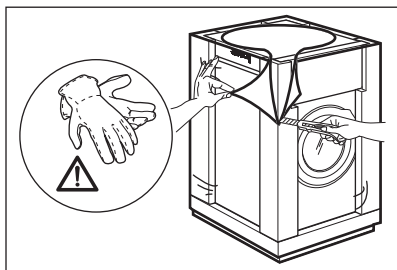
WARNING!
Use the gloves.

5.1 Unpacking

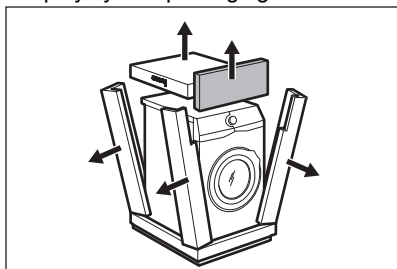


WARNING!
Remove all the packaging and the transit bolts before installing the appliance.

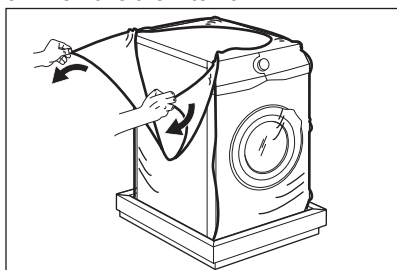
1. Remove the external film. If necessary, use a cutter.



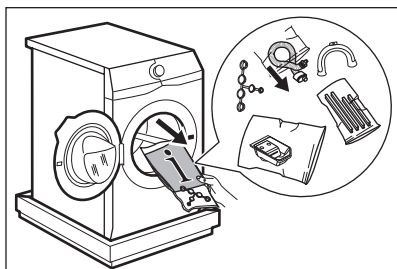
2. Remove the cardboard top and the polystyrene packaging materials.



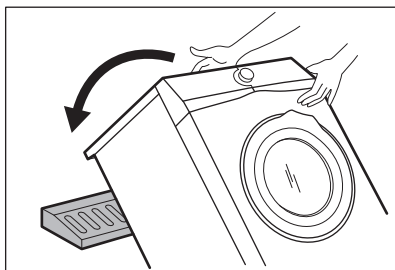
3. Remove the internal film.



4. Open the door and remove the polystyrene piece from the door seal and all the items from the drum.

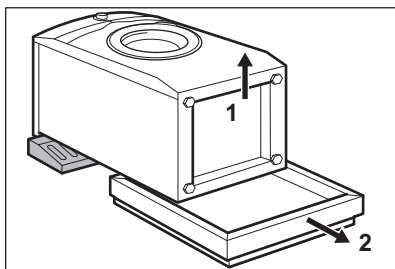


5. Carefully put the appliance down on its rear side.
6. Put the front polystyrene packaging element on the floor under the appliance.

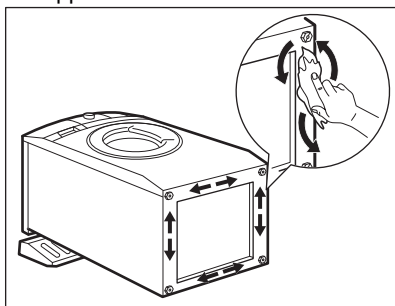


- i** Make sure not to damage the hoses.

7. Remove the polystyrene protection from the bottom.

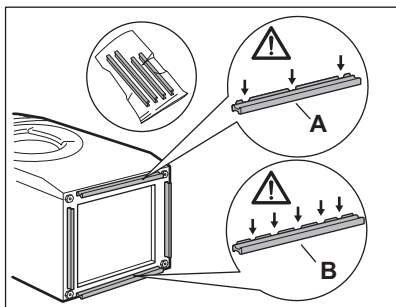


8. Fully clean and dry the bottom of the appliance.



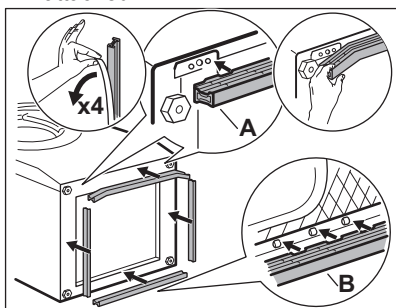
- !** **CAUTION!**
Do not use alcohol, solvents or chemical products.

9. Make sure to identify the different sizes and the positions of the sound barriers. Refer to the illustration:



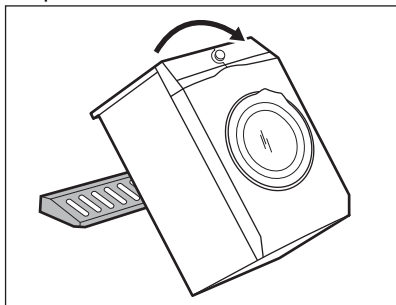
- A (FRONT) = Front of the appliance
- B (BACK) = Rear of the appliance

10. Remove the adhesive strip from the silent barriers.
11. Attach the four barriers to bottom of the appliance.
12. Refer to the illustration. Make sure that the barriers are securely attached.

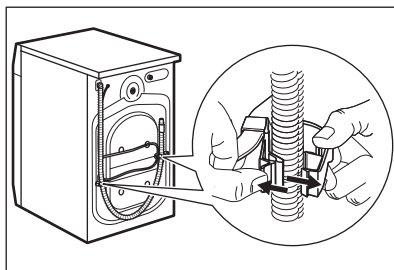


- i** Attach the sound barriers at a room temperature.

13. Pull up the appliance in vertical position.

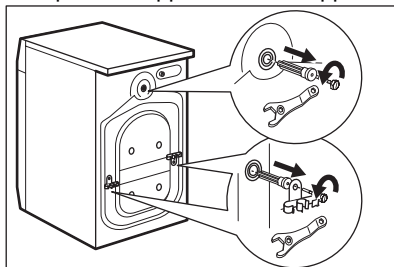


14. Remove the power supply cable and the drain hose from the hose holders.

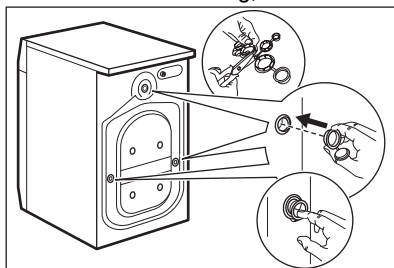


- i** It is possible to see water flowing from the drain hose. This is due to the testing with water of the appliance in factory.

15. Remove the three bolts by using the spanner supplied with the appliance.

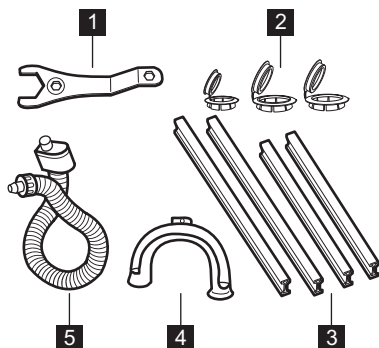


16. Pull out the plastic spacers.
17. Put the plastic caps, that you find in the user manual bag, in the holes.



- i** We recommend that you keep the packaging and the transit bolts for any movement of the appliance.

5.2 Accessories



- 1** Spanner
To remove the transit bolts.
- 2** Plastic caps
To close the holes on the rear side of the cabinet after the removal of the transit bolts.
- 3** Sound barriers
To decrease the noise while the appliance operates.
- 4** Plastic hose guide
To connect the drain hose on the edge of a sink.
- 5** Anti-flood inlet hose
To connect the appliance to the water tap and to prevent possible leakage.

5.3 Positioning and levelling

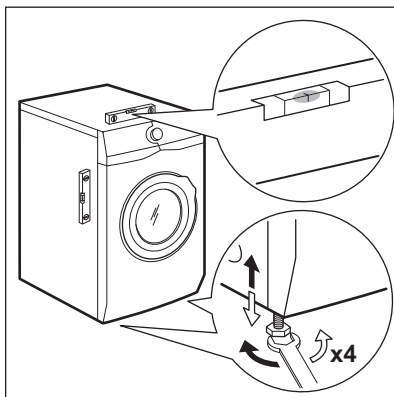
1. Install the appliance on a flat hard floor.

i Make sure that the appliance does not touch the wall or other units.

2. Loosen or tighten the feet to adjust the level.



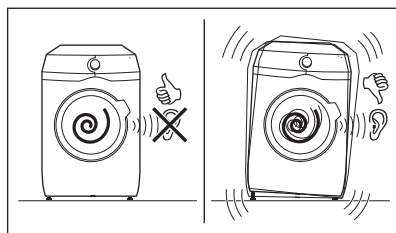
WARNING!
Do not put cardboard, wood or equivalent materials below the appliance feet to adjust the level.



The appliance must be level and stable.

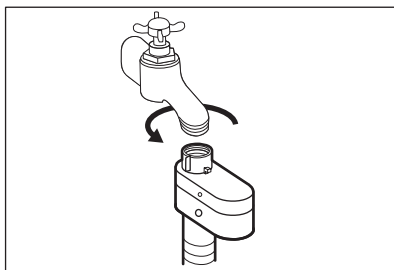
i A correct adjustment of the appliance level prevents the vibration, noise and the movement of the appliance when in operation.

i When the appliance is installed on a plinth or a tumble dryer is stacked on the washing machine, use the accessories described in chapter 'Accessories'. Read carefully the instructions supplied with the appliance and with the accessory.



5.4 The inlet hose

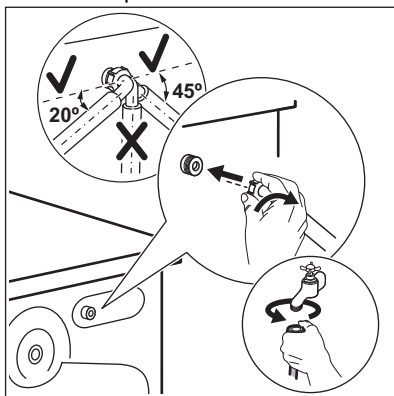
1. Connect the water inlet hose to the cold water tap with 3/4" BSP thread. If necessary, use a spanner.



i Use the hose supplied with the appliance.

! **CAUTION!**
Make sure that there are no leaks from the couplings.

2. Connect the other end of the inlet hose to the back of the appliance. The hose can be turned in any direction.
3. Position it toward left or right depending on the position of the water tap.



i Make sure that the inlet hose is not in vertical position.

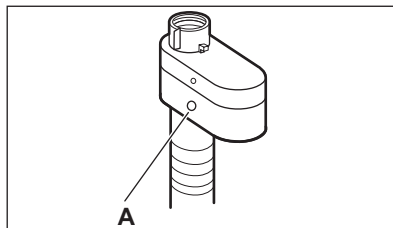
4. If necessary, loose the ring nut to set it in the correct position. Simply loosen the fitting, rotate the hose and retighten the fitting, making sure there are no water leaks.

i Do not use an extension hose if the inlet hose is too short. Contact the service centre for purchasing a new, longer hose specially designed for this type of use.

5.5 Water-stop device

The inlet hose has a water stop device. This device prevents water leaks in the hose because of its natural ageing.

The red sector in the window «A» shows this fault.



If this occurs, close the water tap and contact the authorized service centre to replace the hose.

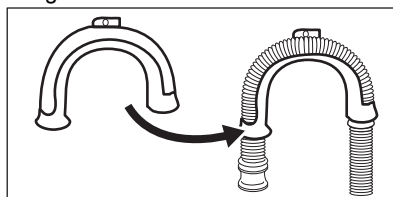
5.6 Water drainage

The drain hose should be positioned at a height of not less than 60 cm and not more than 100 cm from the floor.

i You can extend the drain hose to maximum 400 cm. Contact the authorized service centre for the other drain hose and the extension.

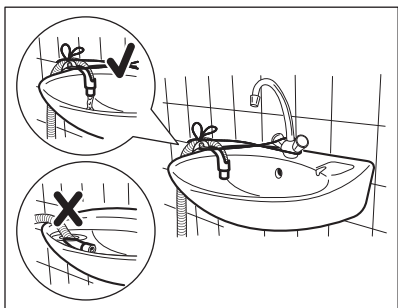
It is possible to connect the drain hose in different ways:

1. Make a U shape with the drain hose and put it around the plastic hose guide.



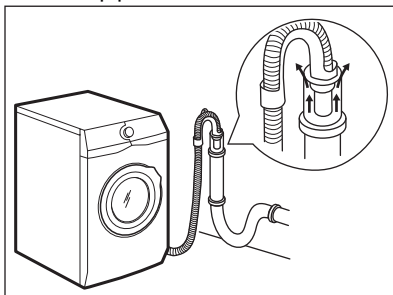
2. On the edge of a sink - Fasten the guide to the water tap or to the wall.

i Make sure that the plastic guide cannot move when the appliance drains.



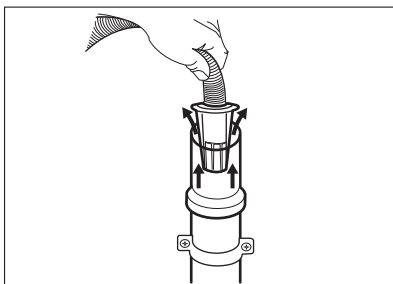
Make sure that the drain hose end is not immersed in the water. There may be a return of dirty water into the appliance.

3. To a stand pipe with vent-hole - Insert the drain hose directly into a drain pipe. Refer to the illustration.

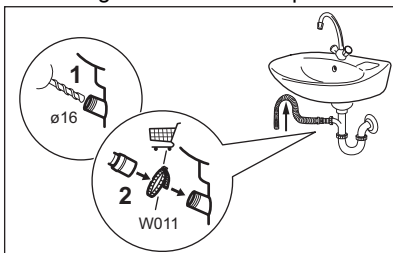


The end of the drain hose must always be ventilated, i.e. the inner diameter of the drain pipe (min. 38 mm - min. 1.5") must be larger than the external diameter of the drain hose.

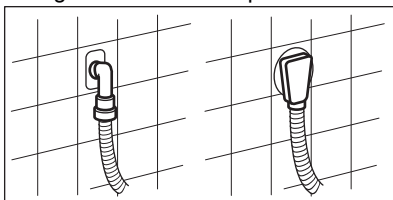
4. If the end of the drain hose looks like this (see the picture), you can push it directly into the stand pipe.



5. Without the plastic hose guide, to a sink spigot - Remove the plastic membrane from the sink trap spigot.
6. Connect the drain hose to the spigot and tighten it with a clamp.



7. Position the hose directly to a built-in drain pipe in the room wall and tighten it with a clamp.



6. THE WATER SOFTENER (SOFT WATER)

6.1 Introduction

The water contains harsh minerals. The higher the content of these minerals the harder the water is.

Hard water can reduce the effectiveness of the detergent, reduce the softness of fabrics and contribute towards shrinkage and colour fading.

This appliance is equipped with a water softener able to provide the right degree of water softening to preserve the fabric integrity, colour brightness and ensuring good wash performances at low temperature.

The water softener should be adjusted according to the water hardness of your

inlet water. A correct setting allows to achieve the best washing results and the maximum garments protection.

To set the water softener correctly, please refer to 'How to set the water hardness level'.



The first time you turn the appliance on, the touch screen proposes different settings: one on this is water hardness level.

6.2 How to set the water hardness level and activate Water Softener

The appliance allows you to chose between 7 levels corresponding to 7 different ranges of water hardness.

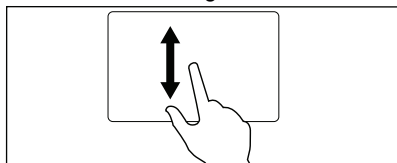
Depending on the country, the water hardness is expressed in equivalent scales: e.g. French degrees (°f), German degrees (°d), English degrees (°e), mmol/l and ppm.


If necessary, please contact your local water authority to check the water hardness in your area.


Check in the "Water hardness levels" table which is the proper level.

To set the water hardness level:

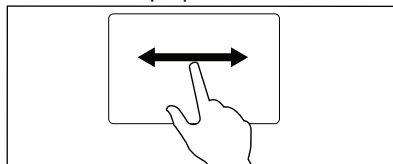
1. Press the On/Off button for a few seconds to activate the appliance.
2. Wait until the program screen appears and scroll up and down the list to find Settings.





3. Tap on  to enter the setting list.


Spin	
Machine Clean	
Settings	
OKOPower	
ColourPro	

4. Scroll the list up and down to find Water Hardness.
5. Tap on the Water Hardness bar.
6. Scroll the level list right and left to chose the proper level.



<Programs	Info
 Buzzer	OFF
 Water Hardness	6
<div> <div><5</div> <div>6</div> <div>7></div> </div>	

7. Tap on the Water Hardness bar to exit and to confirm the chosen level.
8. Scroll up and down the setting list to find the Water Softener bar and tap on it to enter.

<Programs	Info
 Water Softener	Wash
<div> <div><</div> <div>Wash</div> <div>></div> </div>	

9. Scroll the bar right and left to chose:
 - Wash: the water softener acts during washing phase only. This setting satisfies most of the use condition.
 - Wash & Rinse: if the inlet water is particularly hard (6 and 7 levels), we suggest to set the water softener also during rinsing phase to preserve the fabric softness.



This setting increases the salt consumption.

- OFF: to deactivate the water softener.

Water hardness levels

Levels	Levels as indicated on the tester ¹⁾	Water hardness range				
		°f (French degrees)	°d (German degrees)	°e (English degrees)	mmol/l	ppm
1	C01	≤5	≤3	≤ 4	≤0.5	≤ 50
2	C02	6 - 13	4 - 7	5 - 9	0.6 - 1.3	60 - 130
3	C03	14 - 21	8 - 11	10 -15	1.4 - 2.1	140 - 210
4 ²⁾	C04	22 - 29	12 - 16	16 - 20	2.2 - 2.9	220 - 290
5	C05	30 - 37	17 - 20	21 - 26	3.0 - 3.7	300 - 370
6	C06	38 - 45	21 -25	27 - 32	3.8 - 4.5	380 - 450
7	C07	≥46	≥26	≥33	≥4.6	≥460

1) If supplied with the appliance.

2) Factory setting, able to satisfy most of the use conditions.

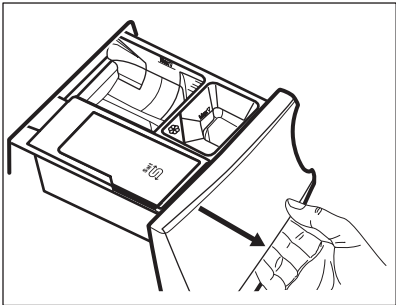
6.3 Pouring salt


The water softener function acts through special resins present in the appliance.

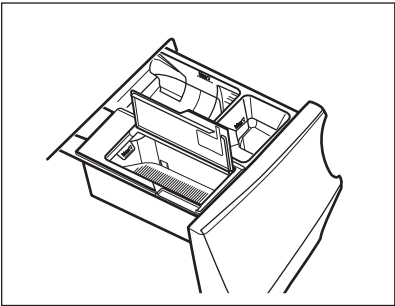
To regenerate the resins and make them ready to soften the water pour a special

salt in the compartment .

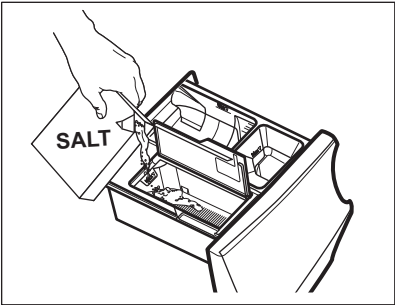
1. Open the detergent dispenser.




2. Open the compartment .




3. Pour the special salt.






4. Close the salt compartment and the detergent dispenser.



 Regularly check if there is enough salt.


The compartment  can contain about 600 gr of salt that are sufficient for about two months if the default water hardness level (C04) is set and the water softener is activated during wash phase only. A different water hardness level or different setting may increase or decrease the salt consumption. Refer to 'How to set the water hardness level' and 'How to set the water softener also during rinse phase'.


The display shows the message Top up salt at the end of a cycle when

compartment  needs to be refilled with salt, even if a little salt still remains.

 **WARNING!**
Pour the salt in the compartment  only.

 **WARNING!**
Do not put anything but salt in the compartment . If any other detergent/additive is poured inadvertently in this compartment, please refer to 'Eliminating detergent or other additives from salt compartment' in 'Troubleshooting' chapter.

 Only use special salt for dishwasher and/or washing machine. The proper salt can be ordered from the web site!
Other types of salts are less efficient and over time could damage the water softener technology permanently. Do not use fine salt!

 The appliance works normally even without salt, but without exploiting its full potential. If you use the appliance without salt for a long time, once the salt is finally refilled, the water softener function is completely restored after a few long washing cycles.


6.4 Water softener regeneration

After a few cycles, the appliance may need to regenerate the water softener.

The regeneration process is automatically ensured when running programs such as Cottons and Synthetics routinely, even if the program duration is reduced by taping the Time Save button once.

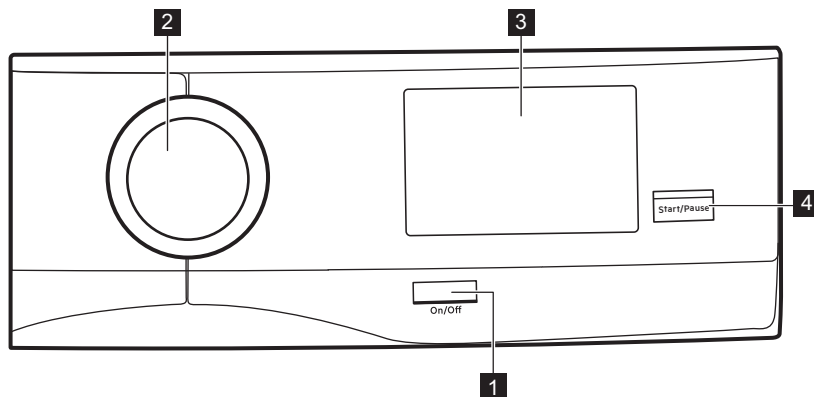
The regeneration process is automatically ensured when running programs such as Cottons and Synthetics routinely.

Other programs may perform the regeneration process automatically, when settings and conditions allow it.

 If you usually run very short cycles, the regeneration process may not occur: you could see that salt has not been used, since it is consumed during regeneration phase only. To ensure the regeneration process run a Cottons or a Synthetics program once a week or every two weeks at least.

7. CONTROL PANEL

7.1 Control panel description



1 On/Off button (On/Off)

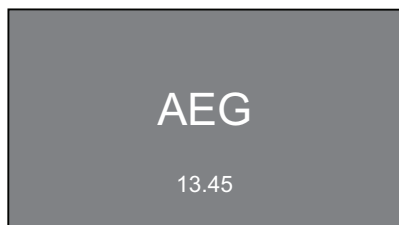
2 Program dial

3 Touch screen

4 Start/Pause button (Start/Pause)

8. FIRST TIME START-UP

Each time you turn the appliance on, the Start-up Screen appears on the touch screen.



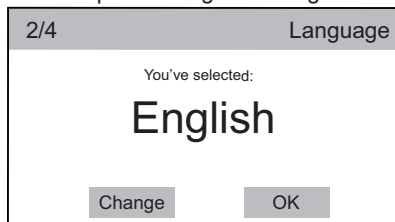
The first time you turn the appliance on, after the Start-up Screen you are guided through the initial setup procedure.

8.1 Language setup

1. Scroll the language list to find the desired language and hold the desired language pressed to set it.

1/4	Language
Svenska	SV
Deutsch	DE
English	EN
Italiano	IT
Francais	FR

2. The following screen pops up:
 - tap on OK to confirm the language:
 - tap on Change to change it.



8.2 Time setup

1. Scroll the hour and minute bars to the right or to the left to set the current time.

3/4		Info
	Set Clock	13:45
<12	13^h	14>
<44	45^{min}	46>

2. Tap on the Set Clock bar to set the time.

3/4		Info
	Set Clock	13:45
<12	13^h	14>
<44	45^{min}	46>

3. The following screen pops up:
 - tap on OK to confirm the set time.
 - tap on Change to change it.

4/4		Set Clock
Current time:		
13:45		
Change	OK	

8.3 More settings

After you set the time, the More settings screen pops up.

More Settings	
More settings to get the best results from this machine will follow. Set them now?	
Later	Set

If you tap on Later, the program list screen appears and you can set the

desired program.

3h01min	
OKOPower	
ColourPro	40°
Cottons	1200
Cottons Eco	More
Synthetics	

If you tap on Set, proceed with next settings.

8.4 Water Hardness

The display suggests to set the proper water hardness level to improve the washing results.

The following window pops up.

Water Hardness	
Select water hardness for best results. Keep default setting?	
Change	OK

- Tap on OK to confirm the default setting.

1. Tap on Change to enter the Water Hardness submenu.

Info		
	Buzzer Long	
	Water Hardness 4	
<3	4	5>

2. Scroll the level list right or left to set the desired water hardness level.
3. Tap on the Water Hardness bar.

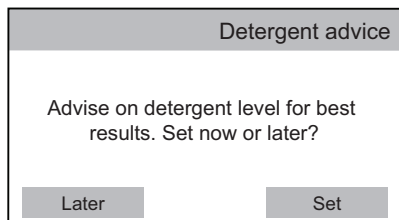
The following window pops up.

Water Hardness	
Water hardness is set to	
4	
Change	OK

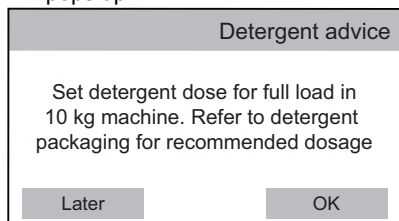
4. Tap on OK to confirm or on Change to change the level.

8.5 Detergent Dosing

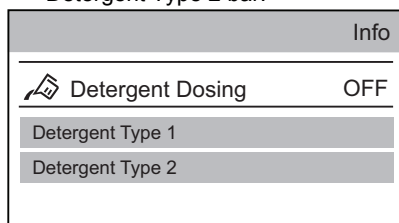
You can set the average quantity of detergent suggested on the detergent packaging.



1. Tap on Set. The following window pops up.

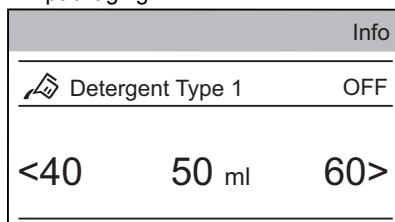


2. Tap on OK to enter the Detergent Dosing menu.
3. Tap on the Detergent Type 1 or Detergent Type 2 bar.

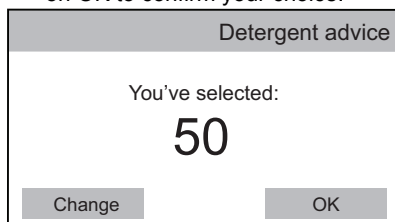


4. Scroll the submenu bar right or left to set the detergent dosage in ml that

matches with the average dosage suggested on the detergent packaging.

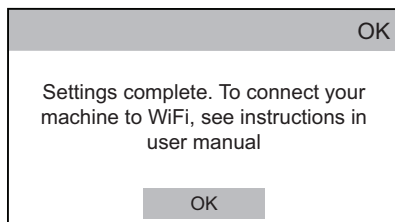


5. Tap on the Detergent Type 1 bar. The following window pops up. Tap on OK to confirm your choice.



8.6 Wi-Fi

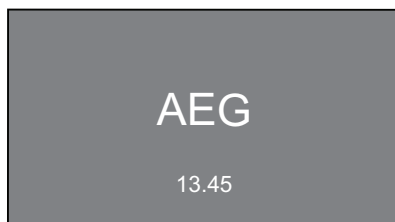
The startup ends with following dialog window.



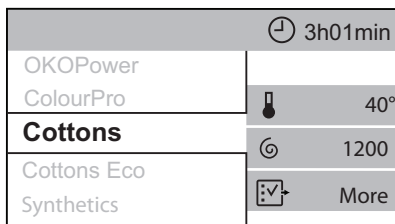
Refer to the "Wi-Fi Connectivity setup" section in the "Settings" chapter.

9. TOUCH SCREEN

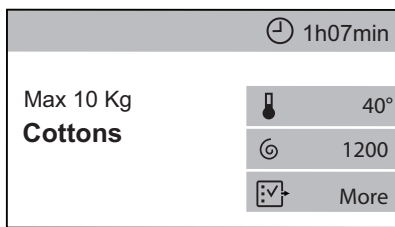
Each time you turn the appliance on, the Start-up Screen appears on the touch screen.



After a few seconds, the program list screen appears proposing Cottons as default program.

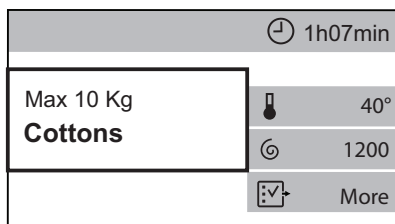


If you don't scroll the program list up and down, in a few seconds the program summary screen appears. To return to the program list screen just tap on the program name (e.g. Cottons).

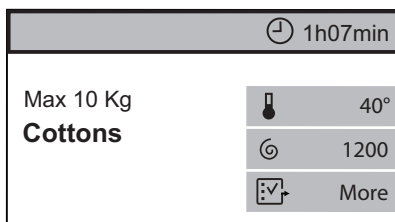


The summary screen shows:

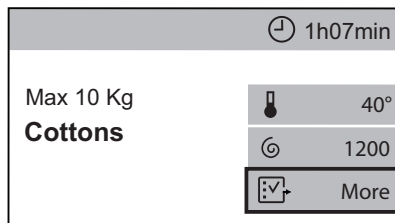
- Program maximum load, program name.



- Program duration. If selected, this area can also show the delayed start or the Time Save symbol.



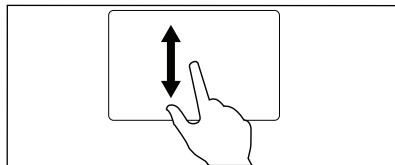
- The currently selected options. The shortcut allows to enter the additional option menu.



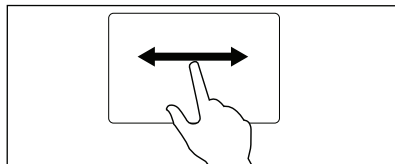
When a shortcut is visible on the summary screen, it is possible to enter an option/setting menu by just tapping on the relevant shortcut.

The different option/setting menus can be scrolled:

- up and down, or



- right or left.



To set some options or settings it is sufficient to change the status from OFF to ON just tapping on the relevant bar.



Programs, options and settings can also be set by turning the program dial and in horizontal submenus the desired choice can be set just tapping on the arrows < or >.

10. WI-FI CONNECTIVITY SETUP

This chapter describes how to connect the smart appliance to the Wi-Fi network and to link it to mobile devices.

By this functionality you can receive notifications, control and monitor your appliance from your mobile devices.

To connect the appliance to enjoy the full range of features and services you need:

- Wireless network at home with internet connection enabled.
- Mobile device connected to wireless network.

Frequency	2.412 - 2.472 GHz for European market
Protocol	IEEE 802.11b/g/n two stream radio
Max Power	<20 dBm

10.1 Installing and configuring AEG Home app



AEG Home allows you to control your laundry through a mobile device.

It contains a large number of programs, useful features and product information tailored perfectly to the appliance.

Through the app you can select the programs already available from the appliance control panel, plus unlock additional programs available only from a mobile device. Additional programs can change over the time along with new versions of the app.

It's personalized laundry care - all from your mobile device.


When connecting the appliance to the application, stand near it with your smart device.


Make sure that your smart device is connected to the wireless network.

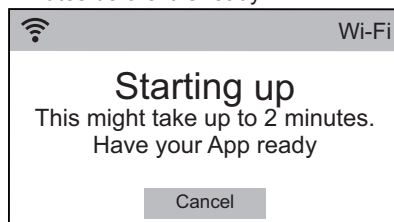
1. Go to the App Store on your smart device.
2. Download and install the AEG Home app.
3. Make sure you started a Wi-fi connection in the appliance. If not, read the next paragraph 'Configuring the appliance wireless connection'.
4. Start the application. Select the country and language and login with Your email and password. If you do not have an account, create a new one following the instructions in AEG Home.
5. Follow the instructions on the App for the appliance registration and configuration.

A message appears on the appliance display to confirm that the configuration was successful.

10.2 Configuring the appliance wireless connection

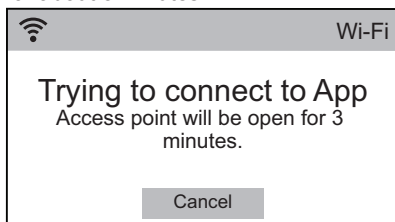
1. In the program list screen, tap on the shortcut  to enter the setting menu.
2. Tap on the Wi-Fi bar to switch the connection on .

A pop-up message will appear, the icon  starts flashing and wireless module begins starting up. It may take about 2 minutes before it is ready.

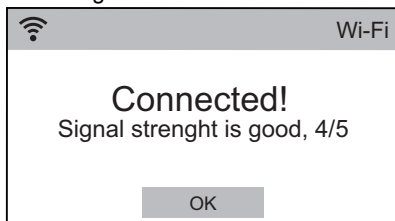


When the wireless module is ready, a pop-up message will appear to inform you, that the access point will be open

for about 3 minutes.




3. Configure the AEG Home app on your smart device.
4. If the connectivity is configured, a message appears on the appliance display to confirm that the configuration was successful.




5. Tap on OK to get back to the machine settings list.
6. Tap on Programs to get back to the program list screen.

Switching the wireless connection off

1. In the program list screen, tap on the shortcut  to enter the setting menu.
2. Tap on the Wi-Fi bar, and a new menu is shown.
3. Tap on Turn off .

Removing the wireless credentials


1. In the program list screen, tap on the shortcut  to enter the setting menu.
2. Tap on the Wi-Fi bar, and a new menu is shown.
3. Tap on Reset network.

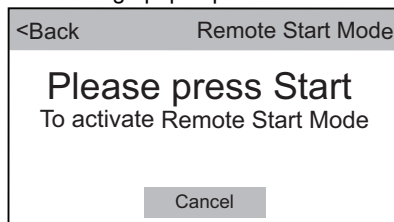
10.3 Remote Start Mode

You can start and stop a washing program remotely.



When the App is installed and the wireless connection is complete, the Remote Start Mode option will appear among the available options of each program.

To activate the remote start:

1. In the program list screen, select the desired program.
2. When the program summary screen appears, tap on  More to enter the option list.
3. Tap on the Remote Start Mode bar to activate it (ON status). The following message pops up:



4. Press the Start/Pause button to activate the Remote Start Mode.

The indicators  and  appear on the program summary screen and the door is locked.



If the door is open, the Remote Start Mode is deactivated.

If you pause or stop the cycle remotely, the door remains locked. To unlock the door, you should be in front of the appliance and press the Start/Pause. To avoid accidental unlocking of the doors, the Child Lock option can be activated.



WARNING!

If the temperature and level of the water in the drum are too high and/or the drum still rotates you cannot open the door.

10.4 Over-the-air update

The App may propose an update for your appliance.

The update is accepted via App only.

If a program is running, the App notifies that the update will start at the end of the program.

During the update, the appliance shows **UPD** in the display.

Do not switch off or unplug the appliance during update.

The appliance will usable again at the end of the update, without any notification about successful update.

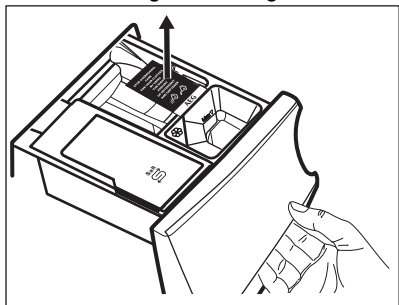
If an error occurs, the appliance shows **E r r** in the display: just press any buttons or turn the knob to return to normal use.

11. BEFORE FIRST USE



During installation or before first use you may observe some water in the appliance. This is a residual water left in the appliance after a full functional test in the factory to ensure the appliance is delivered to customers in perfect working order and is no cause for concern.

1. Make sure that all transit bolts have been removed from the appliance.
2. Make sure that the electrical power is available and the water tap is open.
3. Remove the folded tag in the detergent compartment marked by **III**. This tag suggests to use the right amount of detergent or softener for avoiding overdosing.



4. Make sure that there is salt in the compartment marked by **Salt** and set the proper water hardness level. Refer to "How to set the water hardness level".
5. Pour 2 litres of water into the detergent compartment marked by **III**.

This action activates the drain system.

6. Set and start a program for cotton at the highest temperature without any detergent and laundry in the drum.

12. PROGRAMS

12.1 Program Chart









All washing programs benefit from the softened water, if the water softener is active.

Washing programs

Program	Program description
Washing programs	
OKOPower	Cotton and fast-coloured synthetic items. Complete washing program that, in only 59 minutes, washes the daily soiled laundry intensively and ensures a good washing performance in a short time.
ColourPro	Coloured cottons and synthetics. Low-temperature cycle for a greater colour protection keeping good cleaning results thanks to softened water. To get the best care of your fabrics, we recommend not to fill the drum completely.
Cottons	White cotton and coloured cotton. Normally, heavily and lightly soiled items.
Cottons Eco	White cotton and coloured cotton. Normally, heavily and lightly soiled items.
Synthetics	Synthetic items or mixed fabric items. Normally soiled items.
Delicates	Delicate fabrics such as acrylics, viscose and mixed fabrics requiring gentler washing. Normally and lightly soiled items.

Program	Program description
Wool/Silk	<p>Machine washable wool, hand washable wool and other fabrics with «hand washing» care symbol¹⁾. Woolmark Apparel Care - Green</p> <div data-bbox="437 264 815 507" data-label="Image"> </div> <p>The wool wash cycle of this machine has been approved by The Woolmark Company for the washing of wool garments labelled as «hand wash» provided that the garments are washed according to the instructions issued by the manufacturer of this washing machine. Follow the garment care label for drying and other laundry instructions. M1361 In UK, Eire, Hong Kong and India the Woolmark symbol is a certification trademark.</p>
Steam program	
Steam	<p>Steam program for cotton and synthetic items. Steam can be used for dried²⁾, washed or worn once laundry. This program reduce creases and odours³⁾ and relaxes the fibres. When the program is completed, quickly remove the laundry from the drum. After a steam program, ironing becomes effortless. Do not use any detergent. If necessary, remove stains by washing or using localized stain removal. Steam programs do not perform any hygienic cycle. Do not set a Steam program with these types of items:</p> <ul style="list-style-type: none"> • Items that are not suitable for tumble drying. • Items with label "Dry clean only".
Washing programs	
20min 3kg	Cotton and synthetic items lightly soiled or once worn.

Program	Program description
Outdoor	<p data-bbox="441 169 981 244">  Do not use fabric softener and make sure that there is no softener residue in the detergent dispenser. </p> <p data-bbox="441 268 1025 448"> Outdoor clothing, technical, sport fabrics, waterproof and breathable jackets, shell jackets with a removable fleece or inner insulation. The recommended laundry load is 2.5 kg. This program can also be used as water-repellent restoring cycle, specifically tailored for treating clothes with a hydrophobic coating. To perform the water-repellent restoring cycle, proceed as follows: </p> <ul data-bbox="441 459 981 579" style="list-style-type: none"> • Pour the washing detergent in the compartment . • Pour a special water-repellent restorer for fabric in the drawer compartment for fabric softener . • Reduce the laundry load to 1 kg. <p data-bbox="441 595 986 722">  To further improve the water-repellent restoring action, dry the laundry in a tumble dryer by setting the Outdoor drying program (if available and if the garment care label permits tumble drying). </p>
Jeans	<p data-bbox="441 762 1020 866">Denim clothing and jersey items. Normal soiled. This program performs a gentle rinsing phase, designed for denim, that reduces fading and does not cause washing powder residues on the fibres.</p>
Anti-Allergy	<p data-bbox="441 890 1037 1042">White cotton items. This program removes micro-organisms thanks to a washing phase with the temperature maintained above 60°C for several minutes. This helps remove germs, bacteria, micro-organism and particles. An additional rinsing phase ensures a proper removal of detergent residues and pollen/allergenic items. In this way the wash is more effective.</p>
Rinse	<p data-bbox="441 1066 1025 1217">All fabrics, except woollens and very delicate fabrics. Program for rinsing and spinning the laundry. The default spin speed is the one used for cotton programs. Reduce the spin speed accordingly to the type of laundry. If necessary, set the Extra Rinse option to add rinses. With a low spin speed the appliance performs delicate rinses and a short spin.</p>
Drain	<p data-bbox="441 1241 936 1289">All fabrics, except woollens and very delicate fabrics. Program for draining the water left in the drum.</p>
Spin	<p data-bbox="441 1313 1025 1417">All fabrics, except woollens and very delicate fabrics. Program for spinning the laundry and draining the water left in the drum. The default spin speed is the one used for cotton programs. Reduce the spin speed accordingly to the type of laundry.</p>

Program	Program description
Machine Clean	<p>Maintenance cycle with hot water to clean and freshen the drum and to remove residue that may cause odour. For the best result use this cycle once a month. Before running this cycle, remove all items from the drum. Pour a cup of chlorine bleach or a washing machine cleaner in the washing phase compartment. DO NOT use both together.</p> <p> After the drum cleaning, run a further rinse cycle with empty drum and no detergent to remove any residue of bleach.</p> <p> Run this program especially when the message Cleaning cycle recommended pops up. If the cleaning program is postponed, the message keeps on popping up during next uses until it is run.</p>

1) During this cycle the drum rotates slowly to ensure a gentle wash. It can seem that the drum doesn't rotate or doesn't rotate properly, but this is normal for this program.

2) If you set a Steam program with dried laundry, at the end of the cycle the laundry can be humid. Line dry the items for about 10 minutes.

3) Steam program doesn't remove particularly intense odour.

Program temperature, maximum spin speed and maximum load

Program	Default temperature Temperature range	Maximum spin speed Spin speed range	Maximum load
OKOPower	30 °C 60 °C - 30 °C	1600 rpm 1600 rpm - 400 rpm	5 kg
ColourPro	30 °C 30 °C - Cold	1200 rpm 1200 rpm - 400 rpm	10 kg
Cottons	40 °C 95 °C - Cold	1600 rpm 1600 rpm - 400 rpm	10 kg
Cottons Eco ¹⁾	40 °C 60 °C - 40 °C	1600 rpm 1600 rpm - 400 rpm	10 kg
Synthetics	40 °C 60 °C - Cold	1200 rpm 1200 rpm - 400 rpm	4 kg
Delicates	30 °C 40 °C - Cold	1200 rpm 1200 rpm - 400 rpm	4 kg
Wool/Silk	40 °C 40 °C - Cold	1200 rpm 1200 rpm - 400 rpm	2 kg
Steam	-	-	1.5 kg
20min 3kg	30 °C 40 °C - 30 °C	1200 rpm 1200 rpm - 400 rpm	3 kg

Program	Default temperature Temperature range	Maximum spin speed Spin speed range	Maximum load
Outdoor	30 °C 40 °C - Cold	1200 rpm 1200 rpm - 400 rpm	2.5 kg ²⁾ 1 kg ³⁾
Jeans	40 °C 60 °C - Cold	1200 rpm 1200 rpm - 400 rpm	10 kg
Anti-Allergy	60 °C	1600 rpm 1600 rpm - 400 rpm	10 kg
Rinse	-	1600 rpm 1600 rpm - 400 rpm	10 kg
Drain	-	-	10 kg
Spin	-	1600 rpm 1600 rpm - 400 rpm	10 kg
Machine Clean	60 °C	1200 rpm 1200 rpm - 400 rpm	-


1) This program at 40 °C and 1600 rpm spin speed is recommended for a full load of normally soiled cotton load and is the energy and water rating program in accordance with AS/NZS2040.2 and AS/NZS6400.




2) Washing program.

3) Washing program and waterproofing phase.

Program options compatibility



When you set a washing program and enter the menu , the display shows the available options only.

 Child Lock,  Delay Start and  Memory are selectable with all programs.

	Time Save ¹⁾	Spin Speed	Rinse & Hold	Silent	Eco ²⁾	Stains ³⁾	Prewash	Soak	Extra Rinse	Plus Steam ³⁾	Soft Plus	Anti-crease	Steam Level
OKOPower		■	■						■		■	■	
ColourPro	■	■	■	■				■	■		■	■	
Cottons	■	■	■	■	■	■	■	■	■	■	■	■	
Cottons Eco	■	■	■	■		■	■	■	■	■	■	■	

	Time Save ¹⁾	Spin Speed	Rinse & Hold	Silent	Eco ²⁾	Stains ³⁾	Prewash	Soak	Extra Rinse	Plus Steam ³⁾	Soft Plus	Anti-crease	Steam Level
Synthetics	■	■	■	■	■	■	■	■	■	■	■	■	
Delicates	■	■	■	■	■				■		■	■	
Wool/Silk		■	■										
Steam													■
20min 3kg		■										■	
Outdoor		■	■						■			■	
Jeans	■	■	■		■	■	■		■	■	■	■	
Anti-Allergy		■	■			■	■		■	■	■	■	
Rinse		■	■						■			■	
Drain													
Spin		■											
Machine Clean		■											

1) If you set the shortest duration, we recommend that you decrease the load size. It is possible to fully load the appliance, however the washing results can be less satisfactory.


2) This option is not available with a temperature lower than 30 °C.

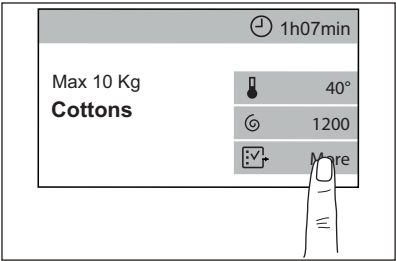
3) This option is not available with temperature lower than 40 °C.

13. OPTIONS

13.1 Introduction



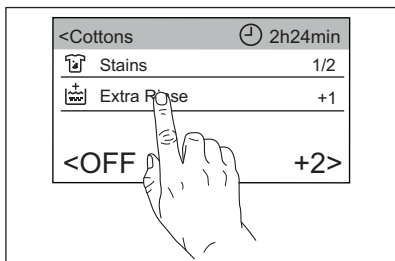
When you enter the menu  More, the display will show only the options available for the program set.



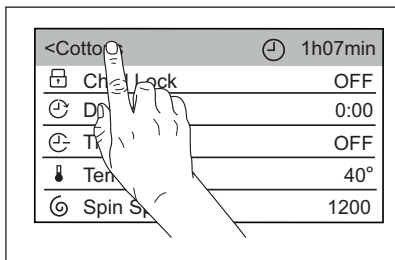
When an option shortcut is on the program summary screen, just tap on it to enter the relevant option submenu directly.

To turn an option on/off or to enter the option submenu, tap on the option bar.

To exit the option submenu, tap on the option bar again.




To return to the program summary screen, tap on the program bar.



13.2 Child Lock

With this option you can prevent the children from accidentally operating the appliance.

To activate this option:

- Tap on the Child Lock bar, the appliance goes back to program summary screen automatically and the shortcut  comes on.


You can activate this option:

- After you have pressed the Start/Pause button: Start/Pause button and the touch screen are deactivated. It is possible to turn the appliance off by means of the On/Off button.
- Before pressing the Start/Pause button: the appliance cannot start.





The appliance keeps the selection of this option after you switch it off.

To deactivate this option:

- Keep the shortcut  pressed for 3 seconds until it goes off.





If the shortcut  is on, you can activate this option by tapping on the shortcut  without entering the More menu. Refer to "Shortcuts" in chapter "Settings".

13.3 Delay Start

With this option you can delay the start of a program to a more convenient time.

1. Tap on the Delay Start bar to enter the submenu.
2. Scroll left or right the hour and/minute bars to set the desired delay start.




When you return to program summary screen, the indicator  and the set delay time appear alternating with the indicator  and the programme duration.

After touching the Start/Pause button, the appliance begins the countdown and the door is locked.

13.4 Time Save

With this option you can decrease the program duration (OFF= normal program duration).

1. Tap on the Time Save bar to enter the submenu.
2. Scroll the submenu bar right to set:
 - Quick option (Mid): if your laundry is normally or lightly soiled, it may be advisable to shorten the washing program.
 - Extra Quick option (Max): in case of smaller load.

When you return to program summary screen, the indicator  Quick or  Extra Quick appears replacing the indicator  and the program duration is updated.

13.5 Temperature

When you select a washing program, the appliance automatically proposes a default temperature.

1. Tap on the Temperature bar to enter the submenu.
2. Scroll the submenu bar to set the desired temperature. Cold= Cold wash.

When you return to program summary screen, the set temperature will be shown.


13.6 Spin Speed

When you set a program, the appliance automatically selects the maximum spin speed.

1. Tap on the Spin Speed bar to enter the submenu.
2. Scroll the submenu bar right or left to:
 - Decrease the spin speed;




The display shows only the spin speeds available for the set program.

- or activate the Rinse & Hold option ; When you return to programme summary screen, the indicator  shows up.

The water of the last rinse is not drained out to prevent the fabrics from creasing. The washing programme ends with water in the drum and the final spin phase is not performed. The door stays locked.

The drum turns regularly to reduce creasing. You must drain the water to unlock the door.

Touch the Start/Pause button: the appliance performs the spinning phase and drains the water.

- or activate the Silent option. When you return to programme summary screen, the indicator  will be on.

All spinning phases (intermediate spin and final spin) are suppressed and the programme ends with water in the drum. This helps to reduce creasing. As the programme is very quiet, it is suitable for use at night time when cheaper electricity tariffs are available. In some programs the rinses are performed with more water. The door stays locked.

The drum turns regularly to reduce creasing. You must drain the water to unlock the door.

Touch the Start/Pause button: the appliance performs the draining phase only.



The appliance empties the water out automatically after approximately 18 hours.

13.7 Eco

Set this option for slightly or normally soiled items washed at 30°C or higher temperatures.


Tap on the Eco bar to turn the option on.

The appliance decreases the washing temperature and extends the washing time to obtain a good washing efficiency by saving energy.

When you return to program summary screen, the shortcut  will be on.

13.8 Stains

1. Tap on the Stains bar to enter the submenu.
2. Tap on the bar of the option you want to set:

- Stains
Select this option to pre-treat heavily soiled or stained laundry using stain remover.
Pour the stain remover into compartment . The stain remover is pre-mixed and heated with detergent in order to improve its effectiveness.




This option can increase the program duration.




This option is not available with a temperature lower than 40 °C.

- Prewash
Use this option to add a prewash phase at 30 °C before the washing phase.
This option is recommended for heavily soiled laundry, especially if containing sand, dust, mud and other solid particles.

 Put the detergent for prewash in a dosing ball inside the drum.

 This option can increase the program duration.

- Soak
Use this function for heavy soiled garments. The appliance soaks the laundry at 30°C for about half an hour before washing.


When you return to program summary screen, the shortcut  will be on.


13.9 Extra Rinse




With this option you can add up to 3 rinses accordingly to the selected washing programs.

Useful for people allergic to detergents and with sensitive skin.

1. Tap on the Extra Rinse bar to enter the option submenu.
2. Scroll the bar right to add from 1, 2 or 3 additional rinses (OFF= no additional rinse).

When you return to program summary screen, the shortcut  will be on. The dots indicate the number of additional rinses selected.

 This option increases the program duration.


 If the Extra Rinse is set as a default option and you select a compatible washing program, the touch screen will show . In this case, by setting the Extra Rinse option, it is possible to add just one rinse .

13.10 Plus Steam


This option adds a steam phase followed by a short anti-crease phase at the end of the washing program.

The steam phase reduces fabric creasing and facilitates the fabric ironing.

Tap on the Plus Steam bar to activate the option (ON status).

 This option can increase the program duration.


 A small laundry load helps to reach better results.

When you return to program summary screen, the shortcut  will be on.


13.11 Soft Plus

Set the Soft Plus option to optimise the fabric softener distribution and improve the fabric softness.

It is suggested when using the fabric softener and especially when the drum is full and the laundry is very soiled.

 This option increases slightly the program duration.


Tap on the Soft Plus bar to activate the option (ON status).

When you return to program summary screen, the shortcut  will be on.

13.12 Anti-crease

When this option is set, at the end of the cycle the drum performs smooth movements for about 30 minutes to favour the garments softness.


Tap on the Anti-crease bar to activate the option (ON status).

When you return to program summary screen, the shortcut  will be on.

13.13 Steam Level

With this option you can change the steam level depending on the laundry size.

1. Tap on the Steam Level bar to enter the submenu.
2. Scroll the list right or left to set one of the following levels:
 - Minimum
 - Medium
 - Maximum

 This is available with the Steam program only.

13.14 ☆ Memory

With this option it is possible to save the two most used washing programs.

To save your favourite programs:

1. First set the washing program and the desired options.
2. Tap on the Memory bar to enter the submenu.
3. Tap on the Memory 1 or Memory 2 to save the set program. The status will change from Empty to In Use.

When you return to program list screen, the M1 or M2 will be on next to the program name when you set it.



Afterwards, each time you turn the appliance on, the M1 and/or M2 programs appear among the first five programs automatically proposed by the appliance and you can set them in the program list screen directly.

⌚ 1h07min	
Settings	
Cottons	🔥 40°
Cottons M1	🌀 1200
Cottons Eco	📄 ↗ More
Synthetics	

To change a saved program:

1. First set the washing program and the desired options.
2. Tap on the Memory bar to enter the submenu.

3. Tap on the Memory 1 or Memory 2 bar with In Use status. A message pops up asking if you want to empty or replace the saved program.

4. Tap on Replace.

To cancel a saved program:

1. Tap on the Memory bar to enter the submenu.
2. Tap on the Memory 1 or Memory 2 bar. A message pops up asking if you want to empty or replace the saved program.
3. Tap on Empty. M1 or M2 will disappear in the program list screen.

13.15 📶 Remote Start Mode



The remote start is available after you have completed the App installing and downloading and appliance wireless connection. Refer to "Wi-Fi Connectivity setup" chapter.

With this option you can start a washing program remotely.

Tap on the Remote Start Mode bar to activate it.

When you return to program summary screen, the shortcut 📶 will be on and the door will be locked.



If Remote Start Mode is activated, the Stand-by function doesn't deactivate the appliance.

14. DAILY USE



WARNING!
Refer to Safety chapters.

14.1 Using weight sensors



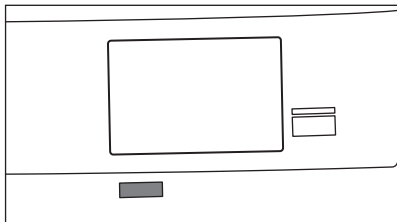
For a correct use of the weight sensor, the drum must be empty when activating the appliance. Set the program **BEFORE** you put the laundry in the drum.

14.2 Before activating the appliance

1. Make sure that the mains plug is connected to the mains socket.
2. Make sure that the water tap is open.

14.3 Activating the appliance and setting a program

Press the On/Off button to turn the appliance on.



A short tune sounds (if activated). The appliance proposes Cottons as default program.
The led of Start/Pause button flashes.

14.4 Stand-by function

The Stand-by function automatically deactivates the appliance to decrease the energy consumption when:

- You do not use the appliance for 5 minutes before pressing the Start/ Pause button and turning the appliance on.
Press the On/Off button to activate the appliance again.
- After 5 minutes from the end of the washing program.
Press the On/Off button to activate the appliance again.
The display shows the end of the last set program.
Turn the program dial to set a new cycle.



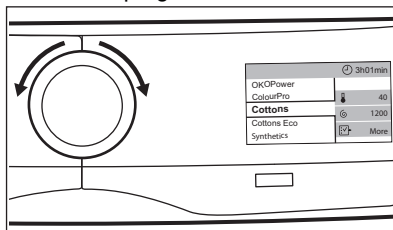
If you set a program or an option that ends with water in the drum, the Stand-by function doesn't deactivate the appliance to remind you to drain the water.



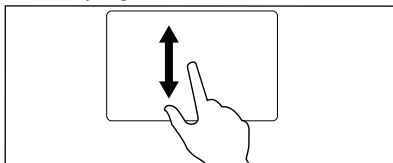
If Remote Start Mode is activated, the Stand-by function doesn't deactivate the appliance.

14.5 Setting a program

1. Turn the program dial to set the desired program.



Or just tap on the program name in the program summary window to return to the program list window and scroll the program list up or down to set the desired program.



2. After a few seconds the display shows program summary screen indicating the maximum load, the default temperature, the maximum spin speed and the program duration.
3. You can tap on the Temperature bar to change the water temperature.
4. You can tap on the Spin Speed bar to change the spin speed or to set Rinse & Hold or Silent option.
5. You can tap on More to enter the menu of the additional available options and set one or more of them.

Afterwards, the shortcuts of the set options show up on the program summary screen.

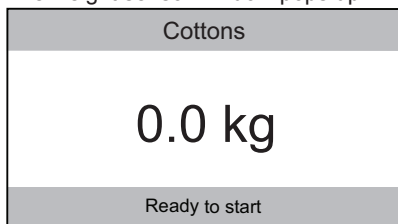


The message This setting is not available pops up in case of wrong selection.

14.6 Loading the laundry

1. Open the appliance door.

The weight sensor window pops up.



2. Shake the garments before you put them in the drum.
3. Put the laundry in the drum, one item at time.

On the display the weight of the laundry is updated by steps of 0.5 kg and the program duration is updated accordingly when you return to the program summary screen.

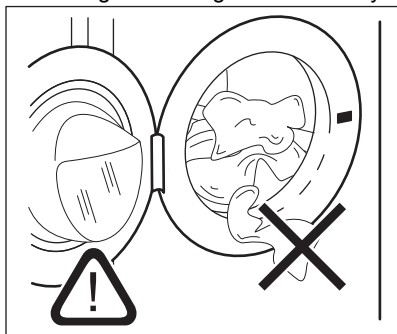
- i** If you put in the drum more laundry than the maximum load, the display tells that the suggested load has been exceeded.

You can wash your laundry anyway, but the water and energy consumption increase.

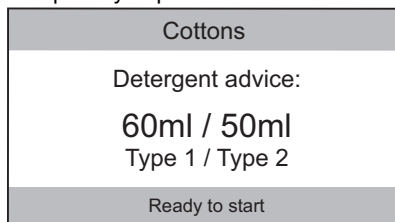
To have the best consumption and washing performance remove the excess items.

The overload indication is shown only in programs with a maximum load lower than the appliance maximum load.

4. Close the door. Make sure that no laundry stays between the seal and the door. There is a risk of water leakage or damage to the laundry.



5. If you have already set Detergent Type 1 or Detergent Type 2 with average suggested dosage for the type of detergent you are using, the appliance recommends the detergent quantity to pour.



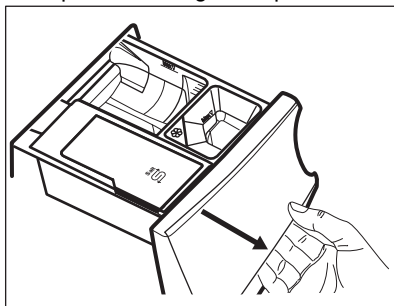
Refer to the "Detergent Dosing" section in the chapter "Settings".

- i** If you change the washing program after closing the door, the display may tell you that the laundry is now exceeding the maximum recommended load for the new program: open the door and remove a few garments.

14.7 Filling the detergent and additives

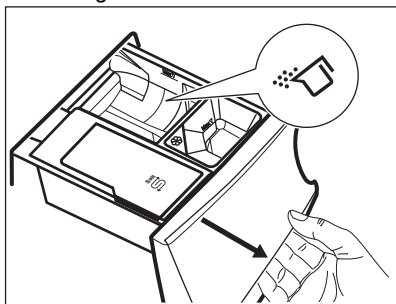
- i** We recommend that you do not exceed the maximum indicated level (**MAX**).
- i** Please read "Detergents type and quantity of detergent" in "Hints and tips" chapter.


1. Open the detergent dispenser.

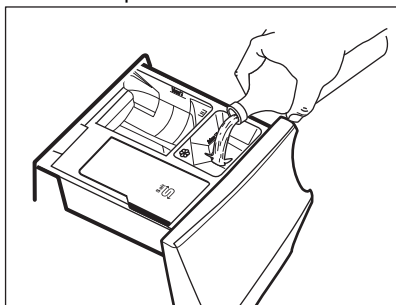


2. Put the powder detergent in the compartment **II**. If using liquid

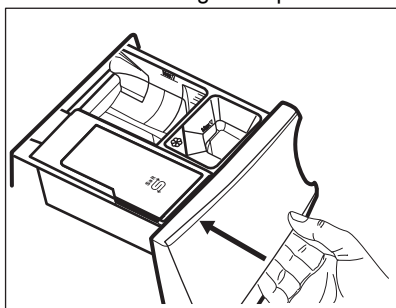
detergent, refer to 'Filling the liquid detergent'.



3. If desired, pour the fabric softener in the compartment .

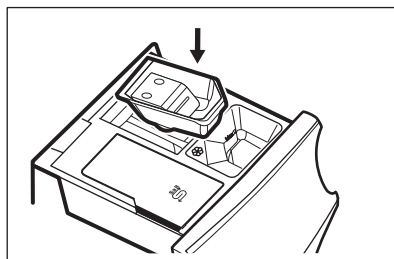



4. Close the detergent dispenser.

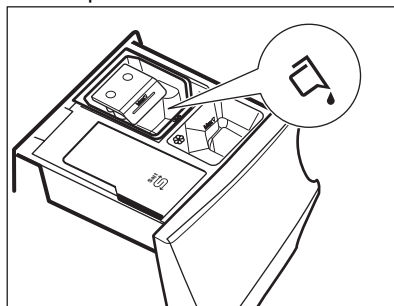


Filling the liquid detergent

1. Insert the proper container for liquid detergent.



2. Pour the liquid detergent in the compartment .



3. Close the detergent dispenser.





14.8 Starting a program

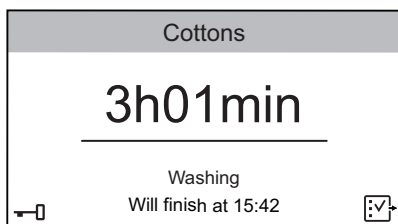
1. Touch the Start/Pause button to start the program.

The related led stops flashing and stays on.


The door is locked.



The window describing the running program pops up, showing:

- The program name.
- The remaining time to program end.
- The progress bar.
- The ProSense phase first and then the running program phase.
- The indicator . When it is on, it is still possible to stop the cycle and add clothes.
- The door locked indicator , when the indicator  goes off.
- The estimated cycle end time.
- The shortcut .



The drain pump can operate shortly before the appliance fills water.

2. If necessary, tap on  to enter the option list and activate the Child Lock option. Refer to "Child Lock" section in the "Options" chapter.

The shortcut  shows up. Keep  pressed for about three seconds to deactivate the Child Lock.

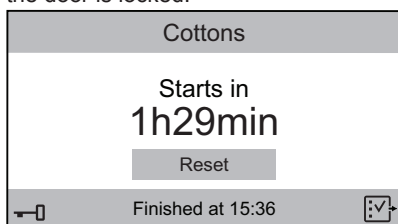
Starting a program with delay start

1. Touch the Start/Pause button to start the programme.

The related led stops flashing and stays on.

The door is locked.

The appliance starts the countdown and the door is locked.



2. Tap on Reset to cancel the delay start and then touch the Start/Pause button or wait until the countdown is completed.

The program will start normally.



The ProSense detection starts at the end of the countdown.



During the cycle, the display will inform you about each running phase (e.g. washing, rinsing and so on).

14.9 The ProSense load detection

After touching the Start/Pause button:

1. The ProSense starts the laundry load detection to calculate the real program duration. The display shows the message Adjusting program to current load.

The appliance adjusts automatically the program duration to the load to achieve perfect washing results in the minimum possible time. The program duration could increase or decrease.


2. After about 20 minutes the display shows the new program duration, the expected program time and advise you about the running phase.



The ProSense detection is carried out with complete washing programs only.

14.10 Interrupting a program and changing the options

When the program is running, you can change only some options:

1. Touch the Start/Pause button . The related led start flashing.
2. Tap on  to change the options. In the option list only the available options will be active.
3. Touch the Start/Pause button again. The washing program continues and the program duration can change.

14.11 Cancelling a running program


1. Press the On/Off button to cancel the program and to deactivate the appliance.
2. Press the On/Off button again to activate the appliance.

Now, you can set a new washing program.

- i** If the ProSense phase is already carried out and the water filling is already started, the new program starts without repeating the ProSense phase. The water and the detergent are not drained out in order to avoid waste.

14.12 Opening the door

- i** If the temperature and level of the water in the drum are too high and/or the drum still rotates you cannot open the door.

- i** If  is on: the water temperature and level are not high and it is still possible to open the door and add clothes.

While a program or the delay start operates, the appliance door is locked.

1. Touch the Start/Pause button . In the display the related door lock indicator goes off.
2. Open the appliance door. If necessary, add or remove the items.
3. Close the door and touch the Start/Pause button.


The programme or the delay start continues.

14.13 End of the program

When the programme has finished, the appliance stops automatically. The acoustic signals operate (if they are active).

The display tells that the cycle is finished and shows 0h00min.

The Start/Pause button goes off.

The door unlocks and the indicator  goes off.


1. Press the On/Off button to deactivate the appliance.
After five minutes after the end of the program, the energy saving function automatically deactivates the appliance.


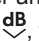


- i** When you activate the appliance again, the display shows the end of the last selected program. Turn the program dial to set a new cycle.

2. Remove the laundry from the appliance.
3. Make sure that the drum is empty.
4. Keep the door and the detergent dispenser slightly ajar to prevent mildew and odours.
5. Close the water tap.

14.14 Draining water out after end of cycle

If you have chosen a program or an option that does not empty out the water of the last rinse, the program is completed, but:

- The display shows 0 min and the Start/Pause button starts flashing.
- The drum still turns at regular intervals to prevent the creases in the laundry.
- The indicator  is still on and the door stays locked.
- You must drain the water to open the door:


1. Touch the Start/Pause button:
 - If you have set , the appliance drains the water and spins.
 - If you have set , the appliance only drains the water.
2. If necessary, change the spin speed proposed by the appliance: touch the Start/Pause button to pause the programme; tap on  and then on the Spin Speed bar.
3. When the programme is completed and the door locked indicator  goes off, you can open the door.
4. Press the On/Off button for a few seconds to deactivate the appliance.


- i** In any case, the appliance empties the water out automatically after approximately 18 hours.

15. SETTINGS

15.1 Introduction

1. In the program summary screen, just tap on the screen to return to the program list screen.
2. Scroll the list up or down to find Settings.


Spin	
Machine Clean	
Settings	
OKOPower	
ColourPro	

3. Tap on the shortcut  to enter the setting menu.
4. Scroll the setting list up or down to find the setting you want to change.

15.2 ⌚ Set Clock

To change the time:

1. Tap on the Set Clock bar to enter the submenu.
2. Scroll the minute and the hour bars right or left to set the current time.

<Programs		Info
	Set Clock	01h00min
< 24	01 ^h	02 >
< 59	00 ^{min}	01 >

3. Tap on the Set Clock bar to return to the machine setting list or tap on the Programs bar to return to the program summary screen.

15.3 🌐 Set Language

To change the language:

1. Tap on the Language bar.
2. Scroll the language list up or down to find the desired language and hold it pressed.

<Back	Language
Svenska	SV
Deutsch	DE
English	EN
Italiano	IT
Francais	FR


3. The screen returns to the setting list automatically. Tap on the Programs bar to return to the program summary screen.

15.4 ☀ Display Brightness

You can regulate the display brightness through 5 brightness levels.

To change the display brightness:

1. Tap on the Display Brightness bar.
2. Scroll the brightness level bar right or left to find the desired level.

<Programs	Info
 Display Brightness	4
<div> <div>< 3</div> <div>4</div> <div>5 ></div> </div>	



3. Tap on the Display Brightness bar to return to the machine setting list or tap on the Programs bar to return to the program summary screen.

15.5 🔔 Cycle End Buzzer


A buzzer sounds at the end of a cycle.

To deactivate the buzzer or to change its duration:

1. Tap on the Cycle End Buzzer bar.
2. Scroll the bar right or left to set the desired set:
 - OFF
 - Short
 - Mid
 - Long
3. Tap on the Cycle End Buzzer bar and then to the Programs bar to return to the program summary screen.



If the Cycle End Buzzer is on, the screen shows the shortcut  (buzzer on) or  (buzzer off). Refer to "Shortcuts" section in this chapter.

15.6 Water Hardness

 To set the proper water hardness level, read the "The Water Softener (SoftWater Technology)" chapter carefully.

To change the water hardness:

1. Tap on the Water Hardness bar.
2. Scroll right or left to set the proper water level.

<Programs		Info
	Buzzer	OFF
	Water Hardness	6
<div> <div><5</div> <div>6</div> <div>7></div> </div>		



3. Tap on the Water Hardness bar to return to the machine setting list or tap on the Programs bar to return to the program summary screen.


15.7 Extra Rinse Default

With this option you can permanently have two additional rinses each time you switch the appliance on and if you set a compatible program.

To activate/deactivate this option:

1. Tap on the Extra Rinse Default bar (ON status).
2. Tap on the Programs bar to return to the program summary screen.


If the Extra Rinse Default is active, the screen will show  and by setting the Extra Rinse option, it will be possible to add just one rinse .

If the Extra Rinse Default is activated, the screen will also show the shortcut . Refer to "Shortcuts" section in this chapter.

15.8 Soft Plus Default


Set the Soft Plus Default to optimise the fabric softener distribution and improve the fabric softness. The Soft Plus option remains permanently on.

It is suggested when using the fabric softener and especially when the drum is full and the laundry is very soiled.

 This option increases slightly the program duration.

To activate/deactivate this option:

1. Tap on the Soft Plus Default bar (ON status).
2. Tap on the Programs bar to return to the program summary screen.


If Soft Plus Default is active, the shortcut  will be on if you set a compatible program.

15.9 Detergent Dosing

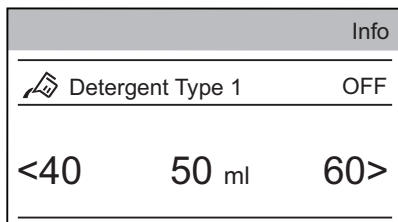
Through this setting you can save the average detergent dosage suggested in the detergent packaging, so the appliance will advise you about the necessary detergent dosage for your cycles.

It is possible to set two types of detergent: e.g., the value entered in Detergent Type 1 could refer to powder detergent and the value entered in Detergent Type 2 could refer to liquid detergent.

1. Tap on the Detergent Dosing.
2. Tap on the Detergent Type 1 or Detergent Type 2 bar.

		Info
	Detergent Dosing	OFF
Detergent Type 1		
Detergent Type 2		

3. Scroll the bar right or left to set the average detergent dosage in ml as suggested on the detergent packaging.



4. Tap on the Detergent Dosing bar to return to the machine setting list or tap on the Programs bar to return to the program summary screen.

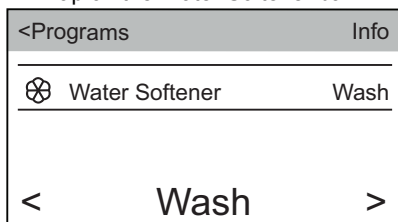
15.10 Water Softener



Read the "The Water Softener (SoftWater Technology)" chapter carefully.

With this setting you can decide when the water softener function should operate:

1. Tap on the Water Softener bar.



2. Scroll the submenu bar right or left to set:
 - OFF: the water softener function is deactivated.
 - Wash: the water softener function is active during washing phase only (factory setting).
 - Wash & Rinse: the water softener function is active during washing and rinsing phase.

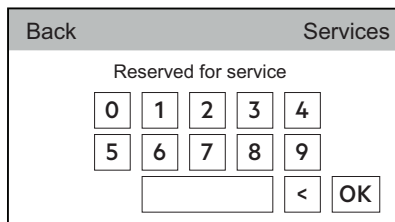


This setting increases the salt consumption.

3. Tap on the Water Softener bar to return to the machine setting list or tap on the Programs bar to return to the program summary screen.

15.11 Service

This area is reserved for the Authorized Service.

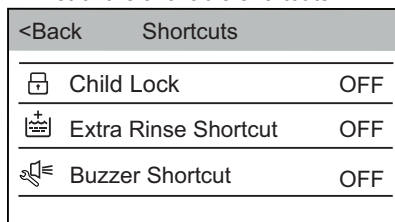


15.12 Shortcuts

This setting allows to bring the shortcuts shown in the next drawing visible on the summary screen.

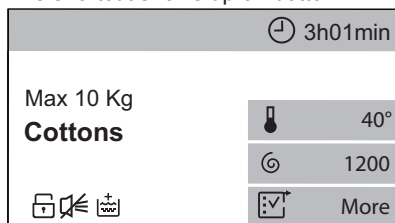
To activate the shortcuts:

1. Tap on the Shortcuts bar to open the list of the available shortcuts.



2. Tap on the bar of the desired shortcut/shortcuts by changing the status to ON.
3. Tap on <Back to return to machine setting list and on Programs to return to summary screen.

The shortcut shows up on bottom.



The shortcut  appears when the relevant option is set.

15.13 Machine Information

Here you can find a short description about all programs, options and settings.

To find the desired description, e.g.:

1. Tap on the Machine Information bar.
2. Tap on 1. Programs bar.

3. Tap on Cottons bar and the relevant description will appear.

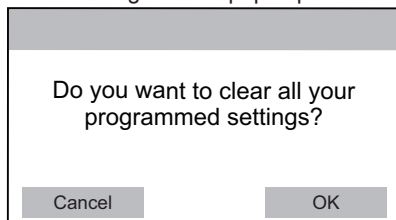
2. Tap on OK to return to factory settings or on Cancel to keep the current settings.

15.14 DEFAULT Factory Reset

Factory Reset restores the original factory settings.

To return to the factory settings:

1. Tap on the Factory Reset bar.
The following window pops up.



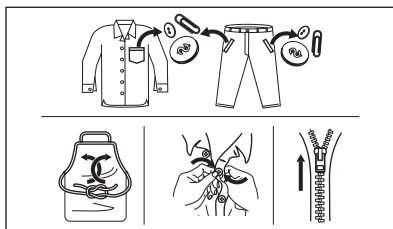
16. HINTS AND TIPS



WARNING!
Refer to Safety chapters.

16.1 The laundry load

- Divide the laundry into: whites, coloureds, synthetics, delicates and woollens.
- Follow the washing instructions on the laundry care labels.
- Do not wash white and coloured items together: whites may lose their «whiteness» in the wash.
- Some coloured items can discolour with the first wash. We recommend that you wash them separately for the first couple of times.
- Turn multilayered fabrics, wool and items with printed illustrations inside out.
- Pre-treat tough stains.
- Wash heavy soil stains with a special detergent.
- Treat curtains with special care. Remove the hooks and put the curtains in a washing bag or pillowcase.
- Do not wash laundry without hems or with cuts. Use a washing bag to wash small and/or delicate items (e.g. underwired bras, belts, tights, shoelaces, ribbons, etc.).
- A very small load can cause balance problems with the spin phase leading to excessive vibration. If this occurs:
 - a. interrupt the program and open the door (refer to "Daily Use" chapter);
 - b. manually redistribute the load so that the items are spaced evenly around the tub;
 - c. press the Start/Pause button.
The spin phase continues.
- Avoid washing garments full of long animal hair or poor quality garments releasing lots of fluff that could block the drain circuit and therefore requiring the Service assistance.
- Make sure that you wash lint collectors separately from lint producer.
- Button up pillowcases, close zippers, hooks and poppers. Tie up belts, cords, shoelaces, ribbons and any other loose elements.
- Empty pockets and unfold the items.



- The recommended loads for each program are indicated in the program chart. Washing a maximum load makes the most efficient use of water and energy. For heavily soiled laundry, reduce the load size.

16.2 Stubborn stains

For some stains, water and detergent is not sufficient.

We recommend that you pre-treat these stains before you put the items in the appliance.

Special stain removers are available. Use the special stain remover that is applicable to the type of stain and fabric.

Do not spray stain remover on garments near the appliance as it is corrosive to the plastic parts.



16.3 Detergents type and quantity of detergent

Low sudsing detergent is required for this washing machine to prevent oversudsing problems, unsatisfied washing result and harm to the appliance. Low sudsing detergents designed for front load washing machines are labelled "Front loading", "high efficiency", "HE" or "Matic".

Do not use wrong types of detergent, such as Top Loading, Handwash

detergent or Soap-Based products in your front-load washing machine. This can result in excessive suds, longer cycle time, low spin speeds, poor rinsing and overloading of the motor and, in extreme cases, suds flowing out of the appliance with symptoms similar to water leak.

Quantity of detergent to be used

The choice of detergent and use of correct quantities not only affects your wash performance, but also helps to avoid waste and protect the environment.

Although biodegradable, detergents contain substances which in large quantities can upset the delicate balance of nature.

The choice and quantity of detergent will depend on:

- type of fabric (delicates, woollens, cottons, etc);
- the colour of clothes;
- size of the load;
- degree of soil;
- wash temperature; and
- hardness of the water used.

Water hardness is classified by so-called "degrees" of hardness.

Information on hardness of the water in your area can be obtained from the relevant water supply company, or from your local authority.

You may have to try using the detergent quantity as per manufactures' instructions then compare the wash result to the list below and adjust the amount of detergent for your future washes accordingly.

Not enough washing powder causes:

- the wash load to turn grey,
- greasy clothes.

Too much washing powder causes:

- sudsing,
- reduced washing effect,
- inadequate rinsing.

Use less detergent if:

- you are washing a small load,
- the laundry is lightly soiled,
- large amounts of foam during washing.

16.4 Ecological hints

To save water, energy and to help protect the environment, we recommend that you follow these tips:

- Normally soiled laundry may be washed without prewashing in order to save detergent, water and time (the environment is protected too!).
- The machine works more economically if it is fully loaded.

- With adequate pre-treatment, stains and limited soiling can be removed; the laundry can then be washed at a lower temperature.
- To use the correct quantity of detergent, refer to the quantity suggested by the detergent producer.

17. CARE AND CLEANING



WARNING!
Refer to Safety chapters.

17.1 External cleaning

Clean the appliance with mild soap and warm water only. Fully dry all the surfaces.

Do not use a scouring pads or any scratching material.



CAUTION!
Do not use alcohol, solvents or chemical products.



CAUTION!
Do not clean the metal surfaces with chlorine-based detergent.

17.2 Descaling



If you use the salt regularly to activate the SoftWater Technology, the descaling procedure described in this paragraph is not necessary.



If the water hardness in your area is high or moderate, we recommend that you use a water descaling product for washing machines.

Regularly examine the drum to check for limescale.

The regular detergents already contain water softening agents, but we recommend to run a cycle with empty

drum and a descaling product occasionally.



Always follow the instructions that you find on the packaging of the product.

17.3 Maintenance wash

The repeated and prolonged use of low temperature and short programs can cause detergent deposits, fluff residues and bacterial growth inside the drum and the tub. This could generate bad odours and mildew.

To eliminate these deposits and hygienize the inner part of the appliance, run a maintenance wash after about 60 cycles, especially when the message Cleaning cycle recommended pops up on the display:

1. Remove all laundry from the drum.
- 2.
3. Run a short cotton program at high temperature with empty drum or, if available, run the Machine Clean program.

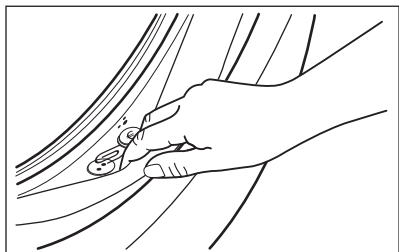


If the cleaning program is postponed, the message keeps on popping up during next uses until it is run.

17.4 Door seal

This appliance is designed with a self cleaning draining system, allowing light fluff fibers that fall off the clothes to be drained out with the water. Regularly examine the seal. Coins, buttons, other

small items can be recovered at the end of the cycle.



Clean it when needed, using ammonia cream cleanser agent without scratching the seal surface.



Always obey the instructions that you find on the packaging of the product.

17.5 Cleaning the drum

Regularly examine the drum to prevent unwanted deposits.

Rust deposits in the drum may occur due to rusting foreign body in the washing or tap water containing iron.

Clean the drum with special products for stainless steel.



Always follow the instructions that you find on the packaging of the product.
Do not clean the drum with acidic descaling products, scouring products containing chlorine or iron or steel.

For a thorough clean:

1. Clean the drum with special products for stainless steel.



Always follow the instructions that you find on the packaging of the product.

2. Run a short cotton program at high temperature with empty drum or, if available, run the Machine Clean program.

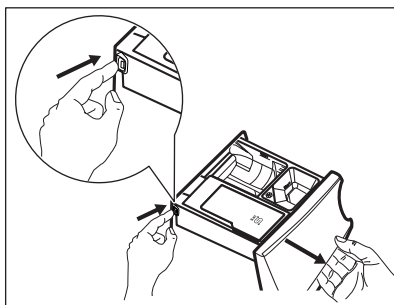
17.6 Cleaning the detergent dispenser and the salt compartment



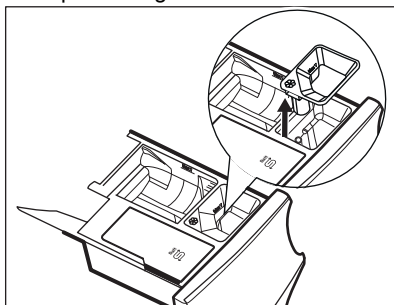
Before cleaning, make sure that all compartments are empty.

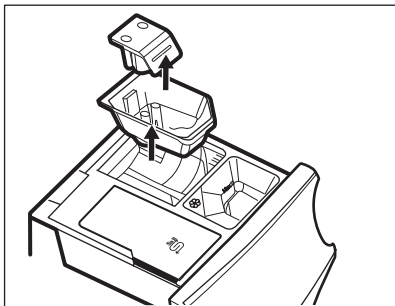
To prevent possible deposits of dried detergent, clotted fabric softener, formation of mould in the dispenser drawer and/or salt fouling in the salt compartment, once in a while carry out the following cleaning procedure:

1. Open the drawer. Press the catch as indicated in the picture and pull the drawer out.

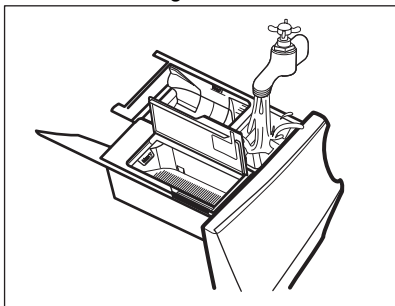


2. Remove the insert for the softener and, if inserted, the container for liquid detergent.

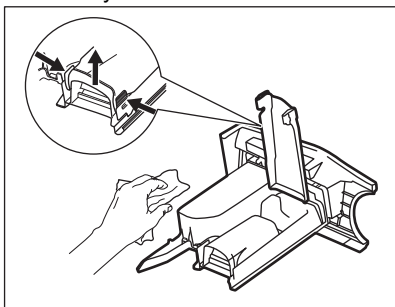




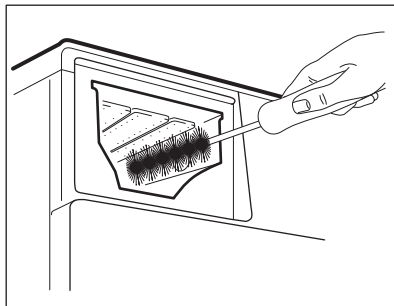
3. Wash the drawer and all inserts under running water.



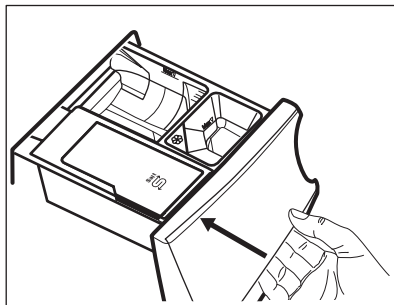
4. Make sure that all detergent residue is removed from the detergent conveyor. Use a cloth.



5. Make sure that all detergent residue is removed from the upper and lower part of the recess. Use a small brush to clean the recess.



6. Insert the detergent drawer into the guide rails and close it. Run the rinsing program without any clothes in the drum.



17.7 Cleaning the drain pump



WARNING!

Disconnect the mains plug from the mains socket.



Regularly check the drain pump filter and make sure that it is clean.

Clean the drain pump if:

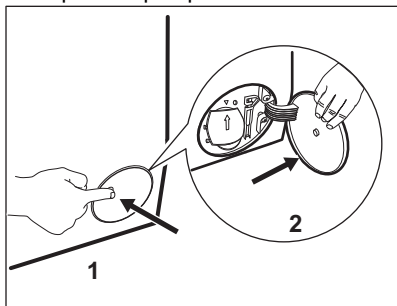
- The appliance does not drain the water.
- The drum does not turn.
- The appliance makes an unusual noise because of the blockage of the drain pump.
- The message Check that the drain filter is not clogged pops up.

**WARNING!**

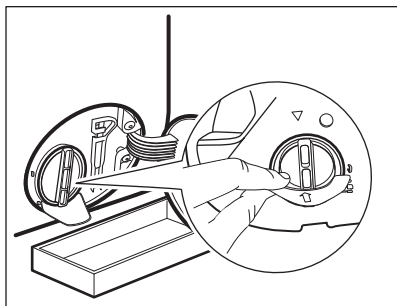
- Do not remove the filter while the appliance operates.
- Do not clean the pump if the water in the appliance is hot. Wait until the water cools down

Proceed as follows to clean the pump:

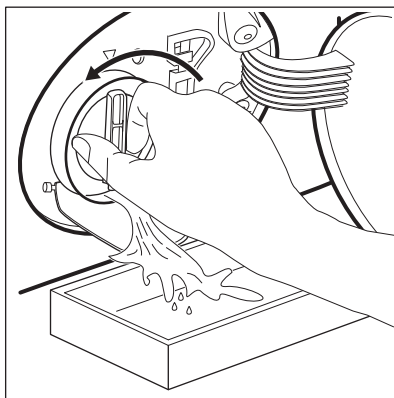
1. Open the pump cover.



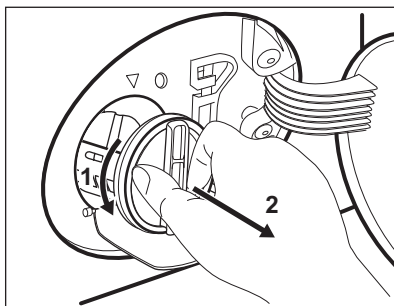
2. Place a suitable bowl below the drain pump access to collect the water that flows out.
3. Open the chute downwards. Always keep a rag nearby to dry up any water spillages when removing the filter.



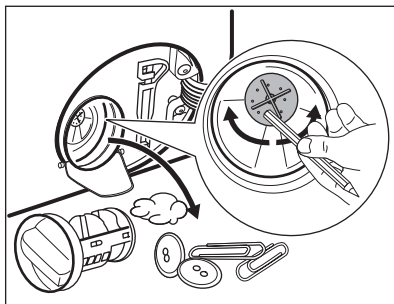
4. Turn the filter 180 degrees in anti-clockwise direction to open it, without removing. Let the water flow out.



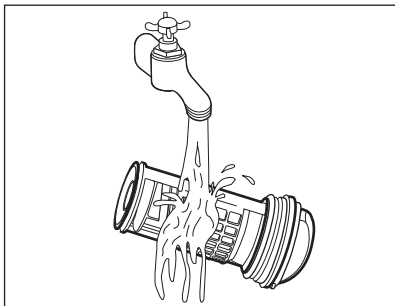
5. When the bowl is full of water, turn the filter back and empty the container.
6. Repeat the steps 4 and 5 until the water stops to flow out.
7. Turn the filter anti-clockwise to remove it.



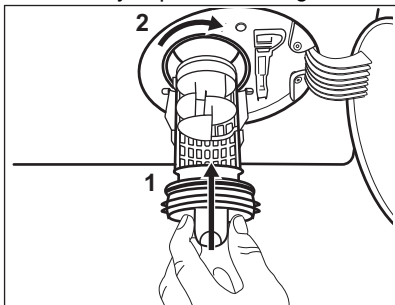
8. If it is necessary, remove fluff and objects from the filter recess.
9. Make sure that the impeller of the pump can rotate. If it does not rotate, contact the Authorised Service Centre.



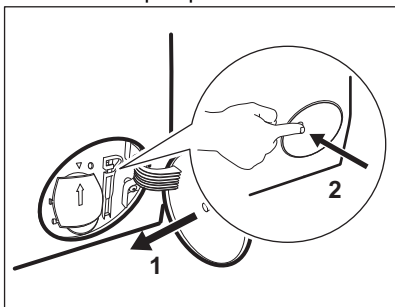
10. Clean the filter under the water tap.



11. Put the filter back into the special guides by turning it clockwise. Make sure that you tighten the filter correctly to prevent leakages.



12. Close the pump cover.



When you drain the water with the emergency drain procedure, you must activate the drain system again:

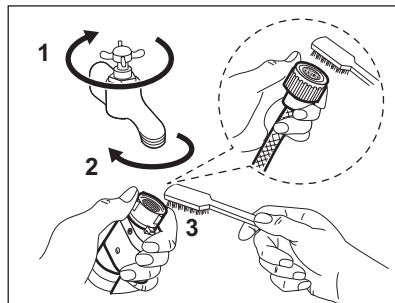
- Put 2 litres of water in the main wash compartment of the detergent dispenser.
- Start the program to drain the water.

17.8 Cleaning the inlet hose and the valve filter

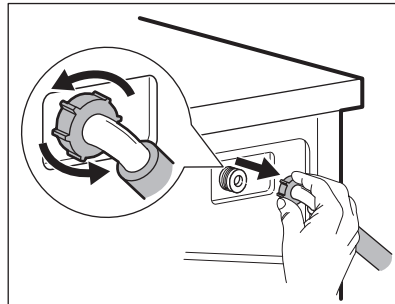
It is recommended to clean both the filters of the inlet hose and valve

occasionally to remove any deposit, collected over the time:

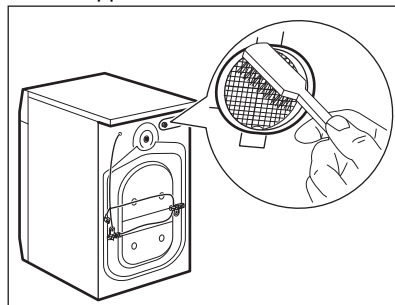
- Remove the inlet hose from the tap and clean the filter.



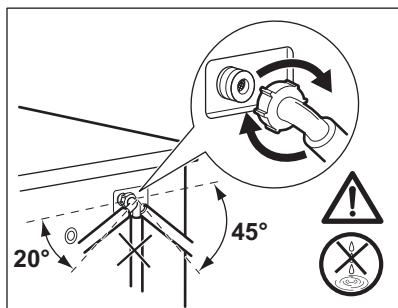
- Remove the inlet hose from the appliance by loosening the ring nut.



- Clean the valve filter on the back of the appliance with a toothbrush.



- When you reconnect the hose to the back of the appliance, turn it left or right (not in vertical position) depending on the position of your water tap.



17.9 Emergency drain

If the appliance cannot drain the water, carry out the same procedure, described in 'Cleaning the drain pump' paragraph. If necessary, clean the pump.

When you drain the water with the emergency drain procedure, you must activate the drain system again:

1. Put 2 litres of water in the main wash compartment of the detergent dispenser.
2. Start the program to drain the water.

17.10 Frost precautions

If the appliance is installed in an area where the temperature can reach the values around 0° C or drop below, remove the remaining water from the inlet hose and the drain pump.

1. Disconnect the mains plug from the mains socket.
2. Close the water tap.
3. Put the two ends of the inlet hose in a container and let the water flow out of the hose.
4. Empty the drain pump. Refer to the emergency drain procedure.
5. When the drain pump is empty, install the inlet hose again.



WARNING!

Make sure that the temperature is higher than 0 °C before you use the appliance again. The manufacturer is not responsible for damages caused by low temperatures.

18. TROUBLESHOOTING



WARNING!
Refer to Safety chapters.

18.1 Introduction



WARNING!
Deactivate the appliance before carrying out any check.

The appliance does not start or it stops during operation.

First try to find a solution to the problem (refer to the "Possible failures" table). If the problem persists, contact the Authorised Service Centre.

In case of major problems, the buzzer operates, an alarm message pops and the Start/Pause button may flash continuously, e.g.:

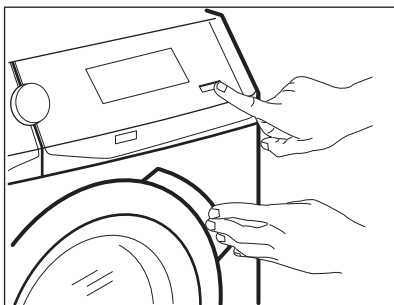
- Check that the water inlet tap is open
 - The appliance does not fill with water properly.

- Check that the drain filter is not clogged - The appliance does not drain the water.
- Check that the door is properly closed
 - The appliance door is open or not closed correctly. Please check the door!



If the appliance is overloaded, remove some items from the drum and/or keep the door pressed while pressing the Start/Pause button until the indicator

— stops flashing (see the picture below).



- Program will continue when electricity supply is stable - The mains supply is unstable. Wait until the mains supply is stable.
- A water leak has been detected - The anti-flood device is on. Disconnect the

appliance and close the water tap. Contact the Authorised Service Centre.

- Cleaning cycle recommended - Run the Machine Clean program as described in 'Programs' chapter. If the cleaning program is postponed, the message keeps on popping up during next uses until it is run.





If the cleaning program is postponed, the message keeps on popping up during next uses until it is run.

18.2 Possible failures

Problem	Possible solution
The program does not start.	<ul style="list-style-type: none"> • Make sure that the mains plug is connected to the mains socket. • Make sure that the appliance door is closed. • Make sure that there is no damaged fuse in the fuse box. • Make sure that the Start/Pause has been touched. • If the delay start is set, cancel the setting or wait for the end of countdown. • Deactivate the Child Lock function if it is on.
The appliance does not fill with water properly.	<ul style="list-style-type: none"> • Make sure that the water tap is open. • Make sure that the pressure of the water supply is not too low. For this information, contact your local water authority. • Make sure that the water tap is not clogged. • Make sure that the inlet hose has no kinks, damages or bends. • Make sure that the connection of the water inlet hose is correct. • Make sure that the filter of the inlet hose and the filter of the valve are not clogged. Refer to "Care and cleaning".
The appliance fills with water and drains immediately	<ul style="list-style-type: none"> • Make sure that the drain hose is in the correct position. The hose may be positioned too low. Refer to "Installation instruction".

Problem	Possible solution
The appliance does not drain the water.	<ul style="list-style-type: none"> • Make sure that the sink spigot is not clogged. • Make sure that the drain hose has no kinks or bends. • Make sure that the drain filter is not clogged. Clean the filter, if necessary. Refer to "Care and cleaning". • Make sure that the connection of the drain hose is correct. • Set the drain program if you set a program without drain phase. If the drain program is not available in the program dial, it can be set via App'. • Set the drain program if you set an option which ends with water in the tub.
The spin phase does not operate or the washing cycle lasts longer than usual.	<ul style="list-style-type: none"> • Set the spin program. If the drain program is not available in the program dial, it can be set via App'. • Make sure that the drain filter is not clogged. Clean the filter, if necessary. Refer to "Care and cleaning". • Adjust manually the items in the tub and start the spin phase again. This problem may be caused by balance problems.
There is water on the floor.	<ul style="list-style-type: none"> • Make sure that the couplings of the water hoses are tight and there is not water leakages. • Make sure that the water inlet hose and the drain hose have no damages. • Make sure you use the correct detergent and the correct quantity of it. • Too much detergent or unsuitable detergent creates too much foam. Reduce detergent quantity and/or use a suitable detergent.
You cannot open the appliance door.	<ul style="list-style-type: none"> • Make sure that a washing program that ends with water in tub, has been selected. • Make sure that the washing program is finished. • Set the drain or the spin program if there is water in the drum. If the spin and drain programs are not available in the program dial, they can be set via App. • Make sure that the appliance receives electrical power. • This problem may be caused by a failure of the appliance. Contact the Authorised Service Centre. If you need to open the door, please read carefully "Emergency door opening". • Make sure that the Remote Start Mode is not activated. De-activate it.
The message "Failed to connect to your WiFi" appears on the screen.	<ul style="list-style-type: none"> • Check the wireless signal. • Check your home network and router. • Restart the router. • Contact your wireless service provider if there are further problems with the wireless network.

Problem	Possible solution
The App cannot connect to the appliance.	<ul style="list-style-type: none"> • Check the wireless signal. • Check if your smart device is connected to the wireless network. • Check your home network and router. • Restart the router. • Contact your wireless service provider if there are problems with the wireless network. • The appliance, the smart device, or both, need to be configured again because a new router has been installed or the router configuration has been changed.
The App cannot frequently connect to the appliance.	<ul style="list-style-type: none"> • Make sure that the wireless signal reaches the appliance. Try to move the home router as near the appliance as possible or consider purchasing a wireless range extender. • Make sure the wireless signal is not disrupted by microwave. Turn the microwave off. Avoid using the microwave and the remote control at the same time.
The appliance makes an unusual noise and vibrates.	<ul style="list-style-type: none"> • Make sure the levelling of the appliance is correct. Refer to "Installation instruction". • Make sure that the packaging and/or the transit bolts are removed. Refer to "Installation instruction". • Add more laundry in the drum. The load may be too small.
The program duration increases or decreases during program execution.	<ul style="list-style-type: none"> • The ProSense function is able to adjust the program duration according to the type and the laundry load size. Refer to "The ProSense load detection" in "Daily Use" chapter.
The washing results are not satisfactory.	<ul style="list-style-type: none"> • Increase the detergent quantity or use a different detergent. • Use special products to remove the stubborn stains before you wash the laundry. • Make sure that you set the correct temperature. • Decrease the laundry load. • Make sure that no other type of detergent has been poured the compartment . In this case, refer to "Eliminating detergent or other additives from salt compartment". • Make sure that no salt has been poured in the compartment . If it happens, run a rinse cycle or run the washing cycle again.
Too much foam in the drum during the washing cycle.	<ul style="list-style-type: none"> • Reduce the quantity of detergent. • Too much detergent or unsuitable detergent has been used. Reduce detergent quantity and/or use correct detergent.
Excessive consumption of salt.	<ul style="list-style-type: none"> • Check if the water softener has been set to act also during rinse phase. Refer to "How to set the water hardness level" in "The Water Softener (Soft Water)" chapter.

Problem	Possible solution
Salt is not consumed.	<ul style="list-style-type: none"> The appliance may need a water softener regeneration: run a Cottons or a Synthetics cycle. Refer to "Water softener regeneration" in "The Water Softener (Soft Water)" chapter.
The drum is empty and the display shows there is some weight in.	<ul style="list-style-type: none"> Press the On/Off button to deactivate the appliance and activate it again to set a tare.
The drum is full but the display shows 0.0 kg.	<ul style="list-style-type: none"> You loaded the laundry before activating the appliance. Press the On/Off button to deactivate the appliance. Empty the drum and follow the necessary steps. (Refer to "Loading the laundry")
The drum light does not go on.	<ul style="list-style-type: none"> Make sure that the LED lamp is not burned. To replace it, contact the Authorised Service Centre.

After the check, activate the appliance. The program continues from the point of interruption.

If the problem occurs again, contact the Authorised Service Centre.

If the display shows other alarm codes. Deactivate and activate the appliance. If the problem continues, contact the Authorised Service Centre.

18.3 Emergency door opening

In case of power failure or functioning failure the appliance door remains locked. The washing program continues when the power is restored. If the door remains locked in case of failure, it is possible to open it using the emergency unlock function.

Before opening the door:



CAUTION!

Risk of burns! Make sure that the water temperature is not too high and the laundry is not hot. If necessary, wait until they cool down.



CAUTION!

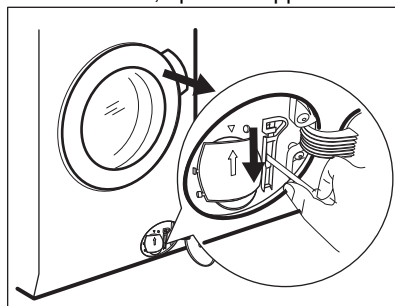
Risk of injury! Make sure that the drum is not rotating. If necessary, wait until the drum stops rotating.



Make sure that the water level inside the drum is not too high. If necessary, proceed with an emergency drain (refer to «Emergency drain» in «Care and cleaning» chapter).


To open the door, proceed as follows:

1. Press the On/Off button to switch the appliance off.
2. Disconnect the mains plug from the mains socket.
3. Open the filter flap.
4. Pull the emergency unlock trigger downward once. Pull it downward once again, keep it tensed and, in the meanwhile, open the appliance door.



5. Take out the laundry and then close the appliance door.
6. Close the filter flap.

18.4 Eliminating detergent or other additives from salt

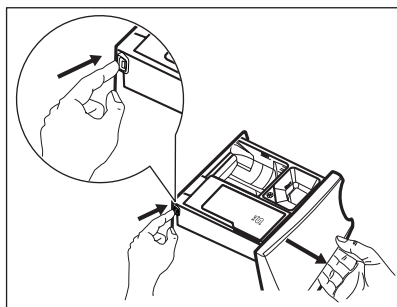
compartment 


Any type of detergent and additives inadvertently poured in the compartment

 must be eliminated completely.

If this happens, please proceed as follows:

1. Pull the drawer out.



2. Eliminate any trace of detergent or additive and clean the compartment thoroughly.
3. Insert the drawer back and pour salt  in the compartment.
4. Close the drawer.
5. Run a cotton or synthetic cycle, without reducing time, to restore the water softener function.

19. ACCESSORIES

19.1 Available in www.aeg.com/shop or from authorised dealer

Read carefully the instructions supplied with the accessory.



Only appropriate accessories approved by AEG ensure the safety standards of the appliance. If unapproved parts are used, any claims will be invalidated.

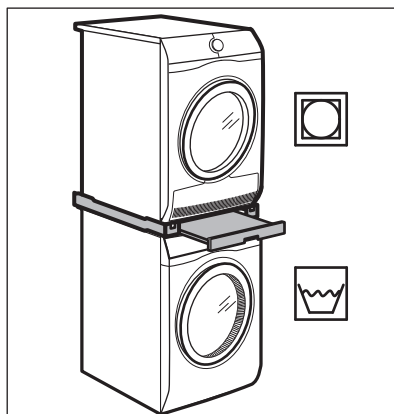
19.2 Fixing plate kit

If you install the appliance on a plinth that is not an accessory supplied by AEG, secure the appliance in the fixing plates.

Read carefully the instructions supplied with the accessory.

19.3 Stacking kit

The tumble dryer can be stacked on the top of the washing machine only by using the correct stacking kit.

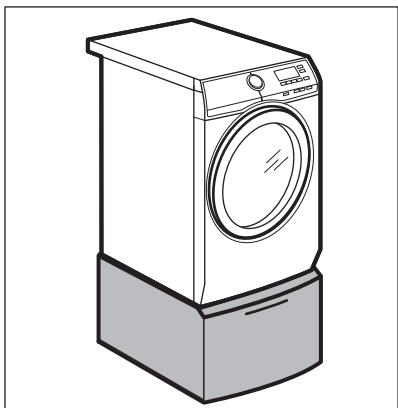




WARNING!
Do not put the tumble dryer under the washing machine. Verify the compatible stacking kit by checking the depth of your appliances.

To raise your appliance and make loading and unloading laundry easier. The drawer can be used for laundry storage e.g.: towels, cleaning products and more.

19.4 Pedestal with the drawer



20. WARRANTY

FOR SALES IN AUSTRALIA AND NEW ZEALAND

ALL AEG BRANDED APPLIANCES

This document sets out the terms and conditions of the product warranties for AEG Appliances. It is an important document. Please keep it with your proof of purchase documents in a safe place for future reference should there be a manufacturing defect in your Appliance. This warranty is in addition to other rights you may have under the Australian Consumer Law.

1. In this warranty:

- a) 'ACL' or 'Australian Consumer Law' means Schedule 2 to the Competition and Consumer Act 2010;
- b) 'Appliance' means any Electrolux product purchased by you and accompanied by this document;
- c) 'ASC' means Electrolux's authorised serviced centres;
- d) 'AEG' is the brand controlled by Electrolux Home Products Pty

Ltd of 163 O'Riordan Street, Mascot NSW 2020, ABN 51 004 762 341 in respect of Appliances purchased in Australia and Electrolux (NZ) Limited (collectively "Electrolux") of 3-5 Niall Burgess Road, Mount Wellington, in respect of Appliances purchased in New Zealand;

- e) 'Warranty Period' means the period specified in clause 3 of this warranty;
 - f) 'you' means the purchaser of the Appliance not having purchased the Appliance for re-sale, and 'your' has a corresponding meaning.
2. Application: This warranty only applies to new Appliances, purchased and used in Australia or New Zealand and is in addition to (and does not exclude, restrict, or modify in any way) other rights and remedies under a law to which the Appliances or services relate, including any non-excludable

- statutory guarantees in Australia and New Zealand.
3. Warranty Period: Subject to these terms and conditions, this warranty continues for in Australia for a period of 60 months and in New Zealand for a period of 60 months, following the date of original purchase of the Appliance.
 4. Repair or replace warranty: During the Warranty Period, Electrolux or its ASC will, at no extra charge if your Appliance is readily accessible for service, without special equipment and subject to these terms and conditions, repair or replace any parts which it considers to be defective. Electrolux may, in its absolute discretion, choose whether the remedy offered for a valid warranty claim is repair or replacement. Electrolux or its ASC may use refurbished parts to repair your Appliance. You agree that any replaced Appliances or parts become the property of Electrolux.
 5. Travel and transportation costs: Subject to clause 7, Electrolux will bear the reasonable cost of transportation, travel and delivery of the Appliance to and from Electrolux or its ASC. Travel and transportation will be arranged by Electrolux as part of any valid warranty claim.
 6. Proof of purchase is required before you can make a claim under this warranty.
 7. Exclusions: You may not make a claim under this warranty unless the defect claimed is due to faulty or defective parts or workmanship. This warranty does not cover:
 - a) light globes, batteries, filters or similar perishable parts;
 - b) parts and Appliances not supplied by Electrolux;
 - c) cosmetic damage which does not affect the operation of the Appliance;
 - d) damage to the Appliance caused by:
 - negligence or accident;
 - misuse or abuse, including failure to properly maintain or service;
 - improper, negligent or faulty servicing or repair works done by anyone other than an Electrolux authorised repairer or ASC;
 - normal wear and tear;
 - power surges, electrical storm damage or incorrect power supply;
 - incomplete or improper installation;
 - incorrect, improper or inappropriate operation;
 - insect or vermin infestation;
 - failure to comply with any additional instructions supplied with the Appliance;
- In addition, Electrolux is not liable under this warranty if:
- the Appliance has been, or Electrolux reasonably believes that the Appliance has been, used for purposes other than those for which the Appliance was intended, including where the Appliance has been used for any non-domestic purpose;
 - the Appliance is modified without authority from Electrolux in writing;
 - the Appliance's serial number or warranty seal has been removed or defaced.
8. How to claim under this warranty: To enquire about claiming under this warranty, please follow these steps:
 - a. carefully check the operating instructions, user manual and the terms of this warranty;
 - b. have the model and serial number of the Appliance available;
 - c. have the proof of purchase (e.g. an invoice) available;
 - d. telephone the numbers shown below.
 9. Australia: For Appliances and services provided by Electrolux in Australia: Electrolux goods come with guarantees that cannot be excluded under the Australian Consumer Law. You are entitled to a replacement or refund for a major failure and for compensation for any other reasonably foreseeable loss or

damage. You are also entitled to have the Appliance repaired or replaced if the Appliance fails to be of acceptable quality and the failure does not amount to a major failure. 'Acceptable quality' and 'major failure' have the same meaning as referred to in the ACL.

10. New Zealand: For Appliances and services provided by Electrolux in New Zealand, the Appliances come with a guarantee by Electrolux pursuant to the provisions of the

Consumer Guarantees Act, the Sale of Goods Act and the Fair Trading Act. Where the Appliance was purchased in New Zealand for commercial purposes the Consumer Guarantee Act does not apply.

11. Confidentiality: You accept that if you make a warranty claim, Electrolux and its agents including ASC may exchange information in relation to you to enable Electrolux to meet its obligations under this warranty.

Important Notice

Before calling for service, please ensure that the steps listed in clause 8 above have been followed.

SERVICE AUSTRALIA

aeg.com/au

FOR SERVICE

or to find the address of your nearest authorised service centre in Australia

PLEASE CALL 1300 363 664

OR EMAIL

customercare@aegaustalia.com.au

For the cost of a local call (Australia only)

FOR SPARE PARTS

or to find the address of your nearest spare parts centre in Australia

PLEASE CALL 13 13 50

OR EMAIL

customercare@aegaustalia.com.au

For the cost of a local call (Australia only)

SERVICE NEW ZEALAND

aegnewzealand.co.nz

FOR SERVICE

or to find the address of your nearest authorised service centre in New Zealand

PLEASE CALL 0800 234 234

OR EMAIL

customercare@electrolux.co.nz

(New Zealand only)

FOR SPARE PARTS

or to find the address of your nearest spare parts centre in New Zealand

PLEASE CALL 0800 10 66 20


OR EMAIL

customercare@electrolux.co.nz

(New Zealand only)

AEG_Warr_May_17

21. ENVIRONMENTAL CONCERNS

Recycle materials with the symbol . Put the packaging in relevant containers to recycle it. Help protect the environment and human health by recycling waste of electrical and electronic appliances. Do not dispose of

appliances marked with the symbol  with the household waste. Return the product to your local recycling facility or contact your municipal office.



The software included in this product contains copyrighted software that is licensed under the BSD, GPL-2.0, LGPL-2.0, LGPL-2.1, zLib, MIT, ISC, Apache 2.0 and others. It is possible to display the complete copy of the licenses in the AEG App that can be downloaded from the corresponding App store from the License menu section. It is possible to download the source code of the open source software used in the product by searching for Wi-Fi Module Software version in NIUX subfolder at the following website: <http://aeg.opensourcerepository.com>.