

Breville Customer Service Centre

Australian Customers

Mail: Locked Bag 2000
Botany NSW 1455
AUSTRALIA

Phone: 1300 139 798

Fax: (02) 9700 1342

Email: Customer Service:
askus@breville.com.au

Web: www.breville.com.au

New Zealand Customers

Mail: Private Bag 94411
Botany Manukau 2163
Auckland NEW ZEALAND

Phone: 0800 273 845

Fax: 0800 288 513

Email: Customer Service:
askus@breville.co.nz

Web: www.breville.co.nz

Breville
Thought for food

Breville is a registered trademark of Breville Pty. Ltd. A.B.N. 98 000 092 928.
Copyright Breville Pty. Ltd. 2016.

Due to continued product improvement, the products illustrated/photographed
in this brochure may vary slightly from the actual product.

the Toast Select™ Luxe

Instruction Book - BTA735



Breville



Contents

- 2 Breville Recommends
Safety First
- 7 Components
- 8 Functions
- 11 Care & Cleaning

BREVILLE RECOMMENDS SAFETY FIRST

At Breville we are very safety conscious. We design and manufacture consumer products with the safety of you, our valued customer, foremost in mind. In addition we ask that you exercise a degree of care when using any electrical appliance and adhere to the following precautions.

IMPORTANT SAFEGUARDS

READ ALL INSTRUCTIONS BEFORE USE AND SAVE FOR FUTURE REFERENCE

- Remove and safely discard any packaging material or promotional labels before using the toaster for the first time.
- To eliminate a choking hazard for young children, remove and safely discard the protective cover fitted to the power plug of this appliance.
- Do not place the toaster near the edge of a table, counter or bench top during operation. Ensure the surface is level, clean and free of water.
- Do not place the toaster on or near a hot gas or electric burner, or where it could touch a heated oven.

- Keep appliance clear of walls and other heat sensitive materials such as cloths and curtains.
- Do not use the toaster on sink drainboard.
- Always ensure the toaster is properly assembled before use. Follow the instructions provided in this book.
- Ensure that bread to be toasted is the correct size for the toaster and does not protrude above the bread slice opening. Ensure the bread is not too thick or long that it will jam or wedge the bread carriage.
- Never cover the toaster whilst it is plugged into the power outlet or while hot.
- Do not place toast directly on top of toasting slots to warm toast as this may prevent correct air circulation and damage the appliance.
- Do not move the toaster whilst in operation or when hot.
- Do not touch hot surfaces. Use side areas for lifting and carrying the appliance.
- Do not leave the toaster unattended when toasting.
- Always turn the power off at the power outlet and then remove the power plug from the power outlet before attempting to move the appliance, when the appliance is not in use and before cleaning or storing.
- Do not allow bread crumbs to accumulate in the bottom of the toaster. Failure to clean the crumb tray regularly may result in a fire hazard.
- Do not clean with metal scouring pads. Pieces can break off the pad and touch electrical parts creating an electric shock hazard.

- Keep the appliance clean. Follow the cleaning instructions provided in this book.
- Unwind the power cord fully before use.
- Do not let the power cord hang over the edge of a table counter, touch hot surfaces or become knotted.
- Children should be supervised to ensure they do not play with the appliance.
- It is recommended to regularly inspect the appliance. Do not use the appliance if power supply power cord, plug or appliance becomes damaged in any way. Return the entire appliance to the nearest authorised Breville Service Centre for examination and/or repair.

IMPORTANT SAFEGUARDS FOR ALL ELECTRICAL APPLIANCES

- Any maintenance other than cleaning should be performed at an authorised Breville Service Centre.
- This appliance is for household use only. Do not use this appliance for anything other than its intended use. Do not use in moving vehicles or boats. Do not use outdoors.
- This appliance is not intended for use by persons (including children) with reduced physical, sensory or mental capabilities, or lack of experience and knowledge, unless they have been given supervision or instruction concerning use of the appliance by a person responsible for their safety.

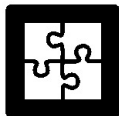
- The installation of a residual current device (safety switch) is recommended to provide additional safety protection when using electrical appliances. It is advisable that a safety switch with a rated residual operating current not exceeding 30mA be installed in the electrical circuit supplying the appliance. See your electrician for professional advice.
- To protect against electric shock, do not immerse cord, plug or appliance in water or any other liquid.
- Always turn the power off at the power outlet and then remove the power plug from the power outlet before attempting to move the appliance, when the appliance is not in use and before cleaning or storing.
- The temperature of accessible surfaces may be high when the appliance is operating.
- This appliance is not intended for use by young children or infirm persons without supervision.
- Young children should be supervised to ensure that they do not play with the appliance.
- This appliance can be used by children aged from 8 years and above and persons with reduced physical, sensory or mental capabilities or lack of experience and knowledge if they have been given supervision or instruction concerning use of the appliance in a safe way and understand the hazards involved.
- Children shall not play with the appliance.

- Cleaning and user maintenance shall not be made by children unless they are older than 8 and supervised.
- Keep the appliance and its cord out of reach of children less than 8 years.
- The appliance is not intended to be operated by means of an external timer or separate remote control system.
- Bread may burn, therefore this toaster must not be used near or below curtains or other combustible material and it must be supervised at all times when in use.

 **WARNING**

Never operate toaster on its side. Never add any food substance to the bread, muffins or crumpets as this can lead to electrocution or fire. This toaster is for toasting bread, crumpets and muffins only. Placing other items in the toaster can lead to electrocution or fire.

**FOR HOUSEHOLD USE ONLY
SAVE THESE INSTRUCTIONS**



Components



A. Brownness Indicators

LEDs to indicate the brownness setting and progress of your toasting.

B. Bread Selection Ring

Select your bread type to ensure comparable brownness across all bread types without the guess work.

The time taken to toast your bread depends on the bread type. Select from White, Fruit, Brown, Grain, Rye or Crumpet to ensure you get the same brownness level every time.

Crumpet setting activates additional heat to the middle heating elements to toast the insides of your crumpets or bagels without burning the outsides.

C. Brownness Selection Dial

Select how brown you like your toast, setting '0' (lightest) to '6' (darkest).

D. 'LIFT & LOOK'™ / High lift lever

Use the lever during the toasting cycle to raise and lower the carriage so you can check the toasting progress without interrupting the toasting cycle. High lift feature makes it easier to remove small items such as English muffins, crumpets or bagels.

E. 'A BIT MORE'™

If your toast comes up too light, one press adds a little extra toasting time.

REHEAT button

If your toast has popped up & gone cold, Press 'reheat' to warm it up again.

F. FROZEN button

Activates additional toasting time required to toast frozen bread.

G. CANCEL button

Cancels the toasting cycle.

NOT SHOWN

Breville Assist™ Plug



Functions



NOTE

This toaster is electronically controlled and will not operate until the toaster is plugged into a 220-240V power outlet. Before first use, remove any packaging material or promotional labels attached to your toaster.

1. Insert the power plug into a 220-240V power outlet. The Brownness Indicators will illuminate from '0' to '6', and then align to the selected browning setting (indicated by the position of the Brownness Dial and Brownness Indicators). The toaster will revert to stand-by mode (Brownness Indicators will dim) after a few minutes if a button is not pressed or the dial is not adjusted.



NOTE

When using the toaster for the first time, we suggest toasting on the maximum setting without bread. The toaster may emit a thin smoke or distinct odour on initial use. This is normal and not detrimental to the performance of the toaster.

2. Place bread, crumpets, bagels, etc into each of the toasting slots. Ensure items for toasting are not too large or too thick to fit in the toasting slots.
3. Select the bread type in toasting slot using the Bread Selection Ring.



NOTE

Various types of bread may require a different browning setting. For example, raisin toast and white light textured breads require less toasting time, while heavier textured rye breads may require more toasting time. Changing the Bread Selection Ring accommodates for these changes (removes the guess work) without changing the Brownness Selection Dial so you always have the same browning no matter what the bread type.

4. When using the Brownness Selection Dial, align the needle with the desired browning setting '0' (lightest) to '6' (darkest). Indicators will illuminate and align to the selected browning setting. The Brownness setting is relative to each Bread Type so there's no need to keep adjusting the setting for different bread types if you have the same brownness requirements.



NOTE

When toasting bread for the first time, it is suggested to toast on browning setting '3' (9 LED Indicators).

5. To start the toasting process, press the lever down until it locks into place. The Brownness Indicators will begin flashing at "0" then start to gradually count up indicating the level of brownness until it reaches the browning setting.
6. Once the toasting cycle is complete the carriage will move to the raised position. Remove the toast. The brownness indicator will re-illuminate to the previously selected browning setting for a few minutes before entering stand-by mode.



NOTE

To re-activate the toaster from stand-by mode, press any button or adjust the Brownness Dial. The Brownness Indicators will re-illuminate.



WARNING

Do not leave the toaster unattended when in use as toast may jam. In the unlikely event that bread, bagels, English muffins or toaster pastries become jammed in the toasting slots, all the buttons and the LED toasting indicators will flash and the elements will turn off. Remove the power plug from the power outlet and allow the toaster to cool completely before carefully easing the bread out of the slots. Take care not to damage the heating elements. Do not use metal utensils.

A BIT MORE™ / REHEAT BUTTON

If your toast comes up too light, one press of this button adds a little extra toasting time. This feature can be selected before, during or after the toasting cycle and can be used with all Bread Types and FROZEN functions.

To use this feature during the toasting cycle:

Press the A BIT MORE™ / Reheat button. The button surround will illuminate white when selected. The toasting time will automatically increase but will not illuminate more Brownness Indicators. The A BIT MORE™ / Reheat function can be cancelled by pressing the A BIT MORE™ / Reheat button again and the original toasting cycle will continue.

To use this feature before or after the toasting cycle:

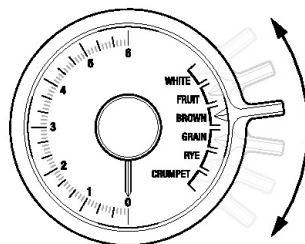
Press the A BIT MORE™ / Reheat button. The button surround will illuminate white when selected. Press down the lever until it locks into place. The Brownness Indicators will automatically align with the lowest browning setting then flash and count down for the additional browning time.

BREAD TYPE SELECTION

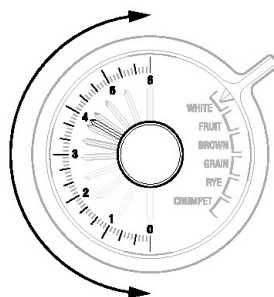
The bread selection feature changes the total toasting time for each bread type, so you can achieve the same brownness setting across different bread types.

To toast different bread types

1. Place the bread into the toasting slots.
2. Adjust the Bread Selection Ring to bread type in the toasting slots, ensuring the pointer aligns with the selected setting.



3. Select the desired browning setting by adjusting the Brownness Selection Dial. Brownness settings range from '0' (lightest) to '6' (darkest).



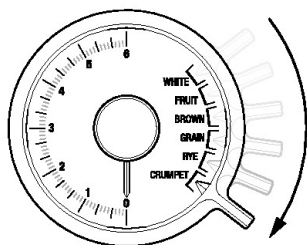
4. To start the toasting process, press the lever down until it locks into place.

CRUMPET SELECTION

The crumpet selection in addition to adjusting the total toasting time activates additional heat to the middle heating elements to perfectly toast the insides of your crumpets or bagels without burning the outsides.

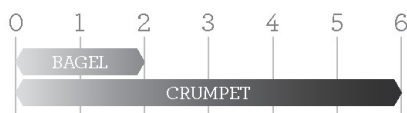
To toast crumpets or bagels:

1. Place the crumpet or bagel into the toasting slots with the inside of the crumpet or bagel facing inwards as per the crumpet & bagel markings above the middle heating elements of the toaster.
2. Adjust the Bread Selection Ring to CRUMPET, ensuring the pointer aligns with the CRUMPET setting.



3. Select the desired browning setting by adjusting the Brownness Selection Dial. Brownness settings range from '0' (lightest) to '6' (darkest).

SETTINGS



4. To start the toasting process, press the lever down until it locks into place.



NOTE

It is normal for the outside heating elements to appear off or on a lower power during the Crumpet setting. This ensures the inside of your crumpet toasts without burning the outside.

FROZEN BUTTON

This feature activates additional toasting time required to toast frozen bread.

To toast frozen bread:

1. Place the bread into the toasting slots.
2. Adjust the Bread Selection Ring so that the pointer aligns with the bread type you've inserted in the toasting slots.
3. Select the desired browning setting by adjusting the Brownness Selection Dial. Brownness settings range from '0' (lightest) to '6' (darkest).
4. To select the FROZEN setting, press the FROZEN button and the button surround will illuminate white.
5. To start the toasting process, press the lever down until it locks into place. The toasting time will automatically increase.
6. After the cycle has finished, the FROZEN button will turn off.



NOTE

The FROZEN function can be cancelled by pressing the FROZEN button again and the original toasting cycle will continue.

LIFT & LOOK™ LEVER

This feature lets you raise & lower the carriage so you can check the toasting progress without interrupting and/or cancelling the toasting cycle. During the toasting cycle, simply lift the lever to view the toasting progress. Lower the lever to continue the cycle or press the CANCEL button to stop the cycle at any time.

HIGH LIFT LEVER

The lever can be lifted approximately 2cm above the starting position. This raises the carriage making it easier to remove smaller items such as English muffins, crumpets or bagels.



Care & Cleaning

1. Switch the toaster off at the power outlet and then remove the power plug from the power outlet. Allow the toaster to cool completely before cleaning.
2. To clean any crumbs from the toaster, remove the crumb tray (located under the control panel at the front of the toaster) by pulling it outwards. Empty and replace the crumb tray before using the toaster again. Replace the crumb tray by sliding it inwards until it locks into position.
3. To remove any additional crumbs caught inside, turn the toaster upside down over a bin and shake gently to free the crumbs. DO NOT bang the toaster, this may damage the elements or carriage mechanism.
4. Wipe the outside of the toaster with a slightly dampened soft cloth and then dry it with a soft dry cloth to dry completely.



NOTE

Do not clean with metal scouring pads. Pieces can break off the pad and touch electrical parts creating an electric shock hazard and damage the finish of the toaster.

STORAGE

Switch toaster off at the power outlet and remove the power plug from the power outlet. Allow the toaster to cool completely before storing. Follow the directions for cleaning and store in an upright position on a flat surface on a bench top or in an accessible cupboard.

Do not store anything on top of the toaster.



WARNING

Do not use the toaster without the slide-out crumb tray in position. Do not allow crumbs to build up in the crumb tray. Failure to clean the crumb tray regularly may result in a fire hazard.