



User Manual

Refrigerator-Freezer

HRF580YPS

HRF580YPC

Haier

Thank You

Thank you for purchasing a Haier Product.

Please read these instructions carefully before using this appliance. The instructions contain important information which will help you get the best out of the appliance and ensure safe and proper installation, use and maintenance.

Keep this manual in a convenient place so you can always refer to it for the safe and proper use of the appliance.

If you sell the appliance, give it away, or leave it behind when you move house, make sure you also pass this manual so that the new owner can become familiar with the appliance and safety warnings.

Legend



Warning – Important Safety information



General information and tips



Environmental information



Disposal

Help protect the environment and human health. Put the packaging in applicable containers to recycle it.

Help to recycle waste of electrical and electronic appliances. Marked with this symbol with the household waste. Return the product to your local recycling facility or contact your municipal office.

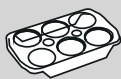
WARNING!

- ▶ Risk of injury or suffocation!
- ▶ Refrigerants and gases must be disposed of professionally. Ensure that the tubing of the refrigerant circuit is not damaged before being properly disposed of. Disconnect the appliance from the mains supply. Cut off the mains cable and dispose of it.
- ▶ Remove the trays and drawers as well as the door catch and seals, to prevent children and pets to get closed in the appliance.

Safety information	2
Intended use	7
Product description	9
Control panel	10
Use	11
Equipment	25
Care and cleaning	28
Troubleshooting	30
Installation	33
Technical data	37

Accessories

Check the accessories and literature in accordance with this list:



Egg trays



3 spacers



Warranty
card



User
manual



Water pipe

Safety information

Before switching on the appliance for the first time read the following safety hints!



WARNING!

Before first use

- ▶ Make sure there is no transport damage.
- ▶ Remove all packaging and keep out of children's reach.
- ▶ Wait at least two hours before installing the appliance in order to ensure the refrigerant circuit is fully efficient.
- ▶ Handle the appliance always with at least two persons because it is heavy.

Installation

- ▶ The appliance should be placed in a well-ventilated place. Ensure a space of at least 10 cm above and around the appliance.
- ▶ Never place the appliance in a damp area or location where it might be splashed with water. Clean and dry water splashes and stains with a soft clean cloth.
- ▶ Do not install the appliance in direct sunlight or in the near of heat sources (e.g. stoves, heaters).
- ▶ Install and level the appliance in an area suitable for its size and use.
- ▶ **WARNING:** Keep ventilation openings in the appliance or in the in-built structure clear of obstruction.
- ▶ Make sure that the electrical information on the rating plate agrees with the power supply. If it does not, contact an electrician.
- ▶ Connect the appliance to the electrical supply (220V-240V 50Hz) with the fitted plug and lead.
- ▶ Abnormal voltage fluctuation may cause the appliance to fail to start, or damage to the temperature control or compressor, or there may be an abnormal noise when operating. In such case, an automatic regulator shall be mounted.
- ▶ Do not use multi-plug adapters and extension cables.
- ▶ **WARNING:** Do not locate multiple portable socket-outlets or portable power supplies at the rear of the appliance.
- ▶ **WARNING:** When positioning the appliance, ensure the supply cord is not trapped or damaged.



WARNING!

- ▶ Use a separate earthed socket for the power supply which is easy accessible. The appliance must be earthed.
- ▶ **WARNING:** Do not damage the refrigerant circuit.

Daily use

- ▶ This appliance is not intended for use by persons (including children) with reduced physical, sensory or mental capabilities, or lack of experience and knowledge, unless they have been given supervision or instruction concerning use of the appliance by a person responsible for their safety.
- ▶ Children aged from 3 to 8 years are allowed to load and unload, but not allowed to clean or install the refrigerating appliances.
- ▶ Keep away children under 3 years of age from the appliance unless they are constantly supervised.
- ▶ Children should be supervised to ensure that they do not play with the appliance.
- ▶ If cool gas or other inflammable gas is leaking in the vicinity of the appliance, turn off the valve of the leaking gas, open the doors and windows and do not unplug a plug in the power cable of the refrigerator or any other appliance.
- ▶ Notice that the appliance is set for operation at a specific ambient range between 16 and 38 °C. The appliance may not work properly if it is left for a long period at a temperature above or below the indicated range.
- ▶ Do not place unstable articles (heavy objects, containers filled with water) on top of the refrigerator, to avoid personal injury caused by falling or electric shock caused by contact with water.
- ▶ Do not pull on the door shelves. The door may be pulled slant, the bottle rack, may be pulled away, or the appliance may topple.
- ▶ Open and close the doors only with the handles. The gap between the doors and between the doors and the cabinet is very narrow.
- ▶ Do not extend your hands in these areas to avoid pinching your fingers. Open or close the refrigerator doors only when there are no children standing within the range of door movement.
- ▶ Do not store or use inflammable, explosive or corrosive materials in the appliance or in the vicinity.

Safety information



WARNING!

- ▶ Do not store explosive substances such as aerosol cans with a flammable propellant in this appliance.
- ▶ Do not store medicines, bacteria or chemical agents in the appliance. This appliance is a household appliance. It is not recommended to store materials that require strict temperatures.
- ▶ Never store liquids in bottles or cans (besides high percentage spirits) especially carbonated beverages in the freezer, as these will burst during freezing.
- ▶ Check the condition of food if a warming in the freezer has taken place.
- ▶ Do not set unnecessarily low temperature in the refrigerator compartment. Minus temperatures may occur at high settings. Attention: Bottles can burst
- ▶ Do not touch frozen goods with wet hands (wear gloves). Especially do not eat ice lollies immediately after removal from the freezer compartment. There is the risk to freeze or the formation of frost blisters. FIRST aid: keep immediately under running cold water.
- ▶ Do not pull away!
- ▶ Do not touch the inside surface of the freezer storage compartment when in operation, especially with wet hands, as your hands may freeze onto the surface.
- ▶ Unplug the appliance in the event of a power interruption or before cleaning. Allow at least 5 minutes before restarting the appliance, as frequent starting may damage the compressor.
- ▶ **WARNING:** Do not use electrical devices inside the food storage compartments of the appliance, unless they are of the type recommended by the manufacturer.

Maintenance / cleaning

- ▶ Make sure children are supervised if they carry out cleaning and maintenance. Disconnect the appliance from the electrical supply before undertaking any routine maintenance. Allow at least 5 minutes before restarting the appliance, as frequent starting may damage the compressor.



WARNING!

- ▶ Hold the plug, not the cable, when unplugging the appliance.
- ▶ Do not clean the appliance with hard brushes, wire brushes, detergent powder, petrol, amyl acetate, acetone and similar organic solutions, acid or alkaline solutions. Please clean with special refrigerator detergent to avoid damage.
- ▶ Do not scrape off frost and ice with sharp objects. Do not use sprays, electric heaters like heater, hair dryer, steam cleaners or other sources of heat in order to avoid damage to the plastic parts.
- ▶ **WARNING:** Do not use mechanical devices or other means to accelerate the defrosting process, other than those recommended by the manufacturer.
- ▶ If the supply cord is damaged, it must be replaced by the manufacturer, its service agent or similarly qualified persons in order to avoid a hazard.
- ▶ Do not try to repair, disassemble or modify the appliance by yourself. In case of repair please contact our customer service.
- ▶ Eliminate the dust on the back of the unit at least once in the year to avoid hazard by fire, as well as increased energy consumption.
- ▶ Do not spray or flush the appliance during cleaning.
- ▶ Do not use water spray or steam to clean the appliance.
- ▶ Do not clean the cold glass shelves with hot water. Sudden temperature change may cause the glass to break.

Refrigerant gas information

- ▶ The appliance contains the flammable refrigerant ISOBUTANE(R600a). Make sure the refrigerant circuit is not damaged during transportation or installation. Leaking refrigerant may cause eye injuries or ignite. If a damage has occurred, keep away open fire sources, thoroughly ventilate the room, do not plug or unplug the power cords of the appliance or any other appliance. Inform the customer service. In case of eyes get into contact with the refrigeran, rinse immediately it under running water and call immediately the eye specialist.

Safety information



WARNING!

This product contains flammable refrigerant isobutane (R600a)
It is hazardous for anyone other than an Authorised Service Person to service this appliance. In Queensland – the authorized Service Person MUST hold a Gas Work Authorisation for hydrocarbon refrigerants, to carry out Servicing or repairs which involve the removal of covers .



The symbol indicates there is a risk of fire since flammable materials are used. Take care to avoid causing a fire by igniting flammable material.

Intended use

Intended use

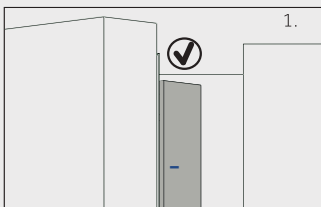
This appliance is intended to be used in household and similar applications such as

- staff kitchen areas in shops, offices and other working environments;
- farm houses and by clients in hotels, motels and other residential type environments;
- bed and breakfast type environments;
- catering and similar non-retail applications.

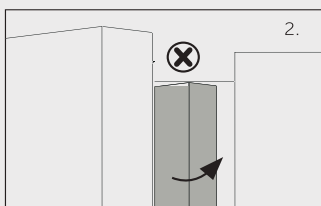
Changes or modifications to the device are not allowed. Unintended use may cause hazards and loss of warranty claims.

Please abandon the refrigerator according to local regulators for its use flammable blowing gas and refrigerant.

CAUTION!



1. When you close the door, the vertical door strip on the left door should be bent inside (1).



2. If you try to close the left door and the vertical door strip is unbent (2), you should bend it firstly, otherwise the door strip will hit the fixing shaft or right door. Thus a damage to the door slip or a leak will occur.

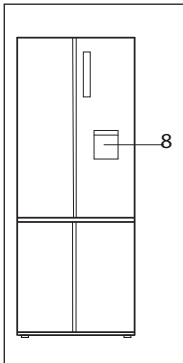
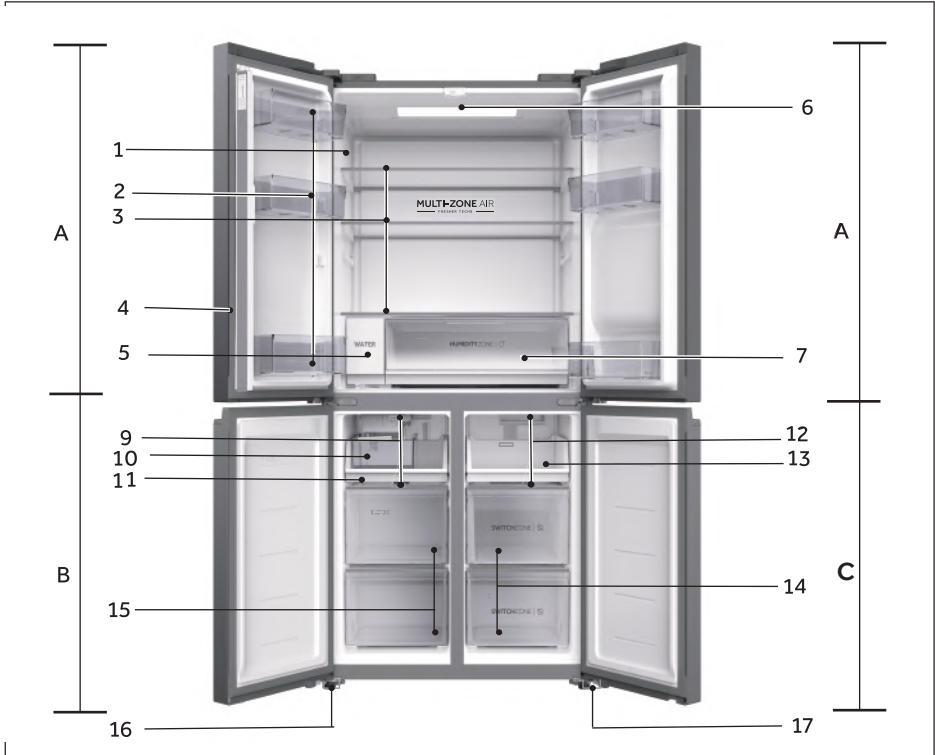
There is a heating thread inside the frame. The temperature of the surface will rise a little, which is normal and won't affect the function of appliance.

Product description



Notice

Due to technical changes and different models, some of the illustrations in this manual may differ from your model.



A: Refrigerator compartment

- 1 Rating plate
- 2 Door shelf
- 3 Cabinet shelf
- 4 Door strip
- 5 Water filter
- 6 Ceiling light
- 7 Humidity zone drawer
- 8 Water dispenser

B: Freezer compartment

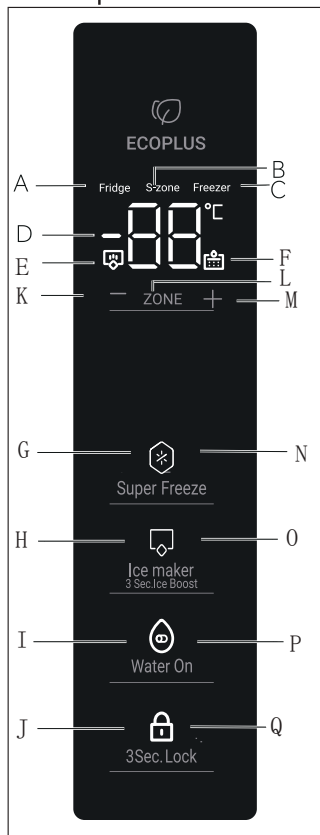
- 9 Air duct
- 10 Ice storage bin
- 11 Storage tray
- 15 Storage drawer
- 16 Adjustable feet

C: Switch Zone compartment

- 12 Air duct
- 13 Storage tray
- 14 Switch Zone storage drawer
- 17 Adjustable feet

Control panel

Control panel



Indicators:

- A Fridge Compartment
- B Switch Zone
- C Freezer Compartment
- D Temperature Display
- E Ice Boost
- F Water Filter Replacement
- G Super Freeze Function
- H Ice Maker
- I Water On
- J Panel lock

Buttons:

- K Temperature control "-"
- L Compartment selection
- M Temperature control "+"
- N Super Freeze function selector
- O Ice maker function selector
- P Water On function selector
- Q Panel lock selector

Before first use

- ▶ Remove all packaging materials, keep them out of children's reach and dispose them in an environmentally friendly manner.
- ▶ Clean the inside and outside of the appliance with water and a mild detergent before putting any food in it.
- ▶ After the appliance has been levelled and cleaned, wait for at least 2-5 hours before connecting it to the power supply. See Section INSTALLATION.
- ▶ Precool the compartments at high settings before loading with food. The function Super-Freeze helps to cool down the compartments quickly.
- ▶ The refrigerator temperature, Switch Zone temperature and freezer temperature are automatically set to 5 °C, -18 °C and -18 °C respectively. These are the recommended settings. If desired, you can change these temperatures manually. Please see ADJUST THE TEMPERATURE.

Before first use the Ice and Water or Automatic Ice function

Before first use, you need to flush water through the filter to remove impurities or trapped air in the water tank and filter system.

For Ice and Water

- Press the water dispenser pedal to dispense 4L of water - wait for 4 minutes before dispensing again.
- Dispense 4L of water and then wait for another 4 minutes - There may be carbon residue dispensed together with water. This is not harmful and normal during the flushing process.
- Dispense another 4 L of water. - This prevents excessive dripping of water from your dispenser.
- There may be a few drips of water coming out of the dispenser for a few days after installation. This is to clear the remaining trapped air in the dispenser.
- Ensure your refrigerator has cooled for at least 2 hours before use.



For Automatic Ice model

- 1 Press control panel button "O" to turn on the ice maker function.
- 2 Discard the first full bin of ice box . Clean the ice box with water and install it back. Your ice maker is now ready for use.
- 3 Repeat step 2 to remove dust in the ice tray collected during manufacture and transport.
- 4 Empty the water, dry the bin and return it correctly.
- 5 Once your Ice maker is turned on the first bin of ice may be discoloured. This is not harmful and normal during the flushing process. Discard the first full bin of ice made. Your Ice maker is now ready for use.



Notice

The performance of your water filter will increase with use, reaching optimum performance after two to three full bins of ice.

Sensor keys

The buttons on the control panel are sensor keys, which already respond when lightly touched with the finger.

Switch on /off the appliance

The appliance is in operation as soon as it is connected to the power supply. When the refrigerator is first powered on, the indicator "D" (Temperature display) illuminates.

The fridge temperature, Switch Zone temperature and freezer temperature are automatically set to 5 °C, -18 °C and -18 °C respectively.

Maybe the panel lock is active.



Notice

The appliance is preset to the recommended temperature of 5 °C (Refrigerator) -18 °C (Switch Zone) and -18 °C (Freezer). Under normal ambient condition you need not to set a temperature.

When the appliance is switched on after disconnection from the main power supply, it may take up to 12 hours for the correct temperatures to be reached.

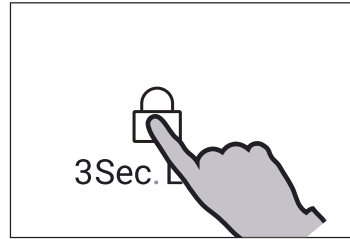
Empty the appliance before switching off. To switch off the appliance, pull the power cord out of the power socket.

Lock/unlock panel



Notice

The control panel is automatically blocked against activation if the doors are closed and 30 seconds no button is pressed. For any settings the control panel must be unlocked.



Standby-mode

The display screen turns off automatically 30 seconds after pressing a key. The display will be automatically locked. It lights up automatically when pressing any key or opening any door (Alarm does not light up the display screen)

Manual adjusting mode

If you want to manually adjust the temperature of the appliance, you can set the temperature via a temperature adjust button (refer to ADJUST THE TEMPERATURE) .

Adjust the temperature

The indoor temperatures are influenced by the following factors:

- ▶ Ambient temperature
- ▶ Frequency of door opening
- ▶ Amount of stored foods
- ▶ Installation of the appliance

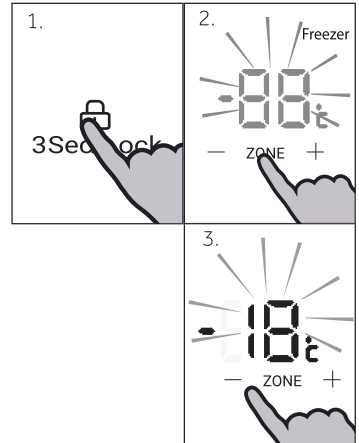
Door alarm

Door alarm will trigger when door opens for long time or not closed properly, as a reminder.

Adjust the temperature for Freezer

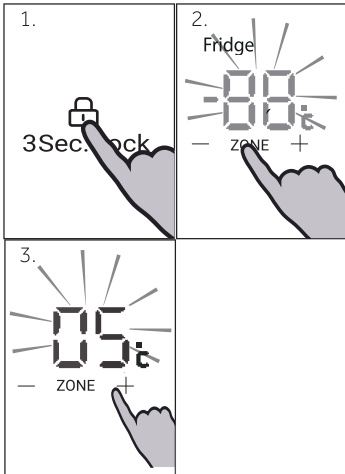
Unlock the settings by long pressing key "Q" for 3 seconds.

Under unlock state, press key "L" (Temperature zone selector) to toggle across compartments. When indicator "C" (Freezer Compartment indicator) lights up, press key "K" (Temperature control "-") or key "M" (Temperature control "+") to adjust Freezer compartment temperature. Value displayed on indicator "D" decreases by 1 °C when key "K" is pressed each time. The display flashes and turns solid with the set temperature, then goes off after a few seconds. Accordingly, value displayed on indicator "D" increases by 1 °C when key "M" is pressed each time. The display flashes and turns solid with the set temperature, then goes off after a few seconds. Freezer compartment temperature can be adjusted from -14 °C to -24 °C with 1 °C incremental.



Notice

Freezer temperature can't be adjusted under Super Freeze and lock state.



Adjust the temperature for Fridge

Unlock the settings by long pressing key "Q" for 3 seconds.

Under unlock state, press key "L" (Temperature zone selector) to toggle across compartments. When indicator "A" (Fridge compartment indicator) lights up, press key "K" (Temperature control "-") or key "M" (Temperature control "+") to adjust the fridge compartment temperature. Value displayed on indicator "D" decreases by 1 °C when key "K" is pressed each time. The display flahes and turns solid with the set temperature, then goes off after a few seconds. Accordingly, value displayed on indicator "D" increases by 1 °C when key "M" is pressed each time. The display flahes and turns solid with the set temperature, then goes off after a few seconds. Fridge compartment temperature can be adjusted from 1 °C to 9 °C with 1 °C incremental.

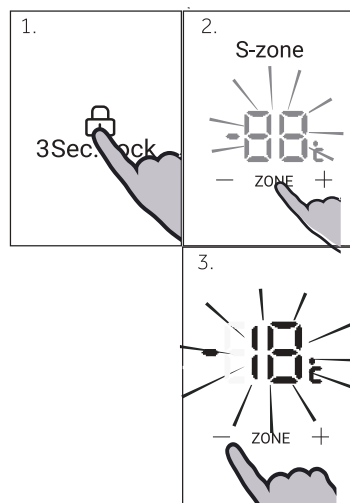


Notice

Fridge temperature can't be adjusted under lock state.

Adjust Switch Zone temperature

Unlock the settings by long pressing key "Q" for 3 seconds. Under unlock state, press key "L" (Temperature zone selector) to toggle across compartments. When indicator "B" (SwitchZone indicator) lights up, press key "K" (Temperature control "-") or key "M" (Temperature control "+") to adjust SwitchZone compartment temperature. Value displayed on indicator "D" decreases by 1 °C when key "K" is pressed each time. The display flashes and turns solid with the set temperature, then goes off after a few seconds. Accordingly, value displayed on indicator "D" increases by 1 °C when key "M" is pressed each time. The display flashes and turns solid with the set temperature, then goes off after a few seconds. Switch Zone compartment temperature can be adjusted from 5 °C to -18 °C with 1 °C incremental.



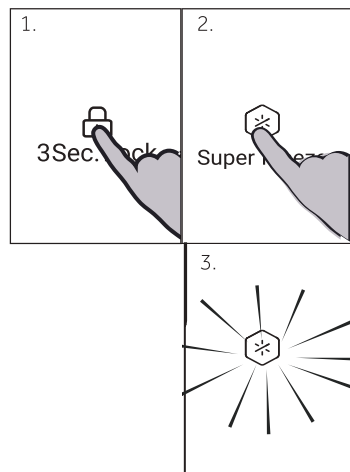
Notice

Switch Zone temperature can't be adjusted under lock state.

Super Freeze function

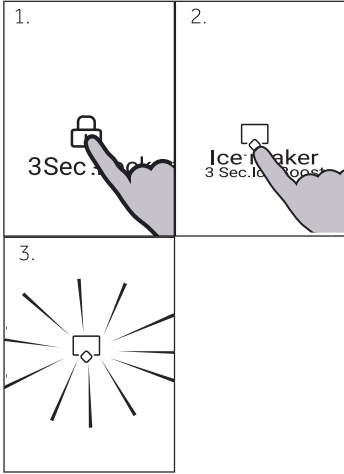
Super Freeze function can freeze the fresh food as soon as possible to the core by accelerating the freezing to preserve the best nutritional value, appearance and taste of food. If you need to freeze a large amount of food once, it is recommended to set the Super Freeze function on ahead for 24 hours before the usage of freezer compartment.

Under unlock state, press key "N" (Super Freeze function selector), indicator "G" (Super Freeze function indicator) lights up, product enters Super Freeze mode. Product automatically exits Super Freeze mode after 50 hours of activation. For manually exiting Super Freeze mode, press key "N" (Super Freeze function selector) under unlock state, indicator "G" (Super Freeze function indicator) goes off, product exits Super Freeze mode.



Notice

Under Super Freeze mode, key "K" (Temperature control "-") & key "M" (Temperature control "+") are locked when freezer compartment is selected and freezer compartment temperature cannot be adjusted.



Ice maker

Under unlock state, press key "O" (Ice maker selector), indicator "H" (Ice maker indicator) lights up, product enters Ice maker mode. For exiting Ice maker mode, press key "O" (Ice maker selector) under unlock state, indicator "H" (Ice maker indicator) goes off, product exits Ice maker mode.

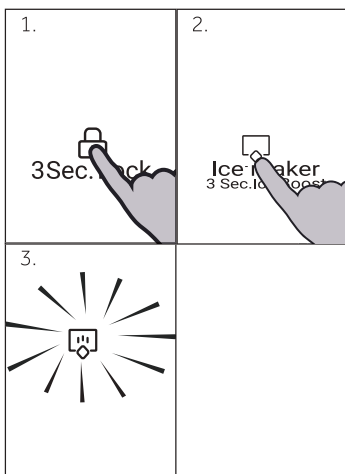
i Notice

The ice maker is off by default when the refrigerator is powered on for the first time. The ice maker is designed to automatically dispense ice into the ice storage bin and it will stop when it detects the bin is full. The more ice you use, the more ice it makes.

3 Sec.Ice Boost

Under unlock state, press key "O"(Ice maker selector) for 3 seconds, indicator "H"(Ice maker indicator) and indicator "E"(Ice Boost indicator) light up, and Ice Boost function is enabled.

In unlock state and under Ice Boost function, press key "O" (Ice maker selector) for 3 seconds, after hearing one beeping sound, Indicator "E"(Ice Boost indicator) goes off, product exits Ice Boost function. And Ice maker indicator "H" still lights up, with Ice maker function still activated.

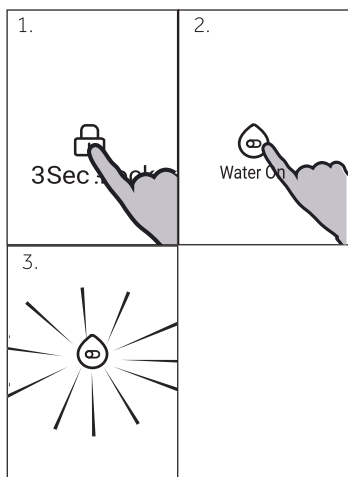


Notice

Note: If the Ice maker is enabled before entering the Ice Boost function. When products exits Ice Boost function, Ice maker indicator "H" still lights up and Ice maker is still working normally; If the ice maker is disabled before entering the Ice Boost function, when product exits Ice Boost function, the Ice maker indicator "H" goes off and the ice maker stops working as well.

Water filter function:

After 6 months since the product is powered on for the first time, indicator "F" (Water Filter replacement Prompt indicator) lights up as a reminder to replace water filter. After replacing the water filter, press the key "P" (Water On function selector) for 3 seconds, after hearing a beeping sound, indicator "F" (Water Filter replacement Prompt indicator) goes off, the Water Filter Replacement Prompt function is reset.



Water on function:

In unlock state, press key "P"(Water on function selector), after hearing one beeping sound, the indicator "I" (Water on indicator) lights up. Water on function is enabled, water will come out from the dispenser when you push the pedal. Press the key "P" (Water on function selector) again, the indicator "I" (Water on indicator) goes off. Water on function is disabled, water will not come out from the dispenser when you push the pedal.



Notice

Note: If the fridge compartment door is open, water will not dispense when pedal is pressed, even when the Water on function is enabled.

Water dispenser

With the water dispenser cool drinking water can be tapped.

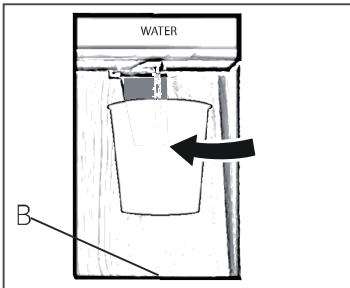
The water tank should be cleaned before first use (see CARE AND CLEANING) .



Notice: Water dispenser

Before refiling dispose residual water and clean the tank.

When you don't need water for a long time, please empty the water tank and insert the cleaned tank.



Getting water from the dispenser

1. Place a glass underneath the water outlet.
2. Push it gently against the water dispenser pedal. Make sure the glass is in line with the dispenser to prevent the water from splashing out
3. Water in the tray (B) should be removed in time, as it could overflow when the door opens and closes.

Tips on storing fresh food

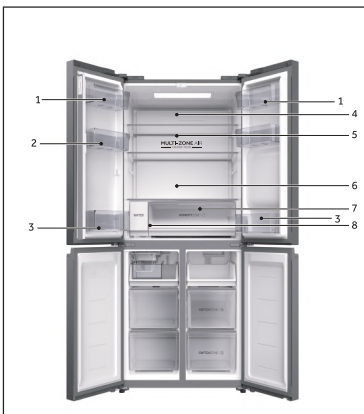
Storing into the refrigerator compartment

- ▶ Keep your fridge temperature below 5°C.
- ▶ Hot food must be cooled to room temperature before storing in the appliance.
- ▶ Foods stored in the refrigerator should be washed and dried before storing
- ▶ Food to be stored should be properly sealed to avoid odour or taste alterations.
- ▶ Do not store excessive quantities of food. Leave spaces between foods to allow cold air flowing around them, for a better and more homogeneous cooling.
- ▶ Foods eaten daily should be stored at the front of the shelf.
- ▶ Leave a gap between foods and the inner walls, allowing air flowing. In special way don't store foods against the rear wall: foods could freeze against rear wall. Avoid direct contact of food (especially oily or acidic food) with the inner liner, as oil/acid can erode the inner liner. Clean away oily/acid dirt whenever it is found.
- ▶ Defreeze frozen food in the fridge storage compartment. This way, you can use the frozen food to decrease the temperature in the compartment and save energy.
- ▶ The ageing process of fruit and vegetables such as courgettes, melons, papaya, banana, pineapple, etc. can be accelerated in the refrigerator. Therefore, it is not advisable to store them in the refrigerator. However, the ripening of strongly green fruits can be promoted for a certain period. Onions, garlic, ginger and other root vegetables should also be stored at room temperature.
- ▶ Unpleasant odours inside the fridge are a sign that something has spilled and cleaning is required. See CARE AND CLEANING.
- ▶ Different foods should be placed in different areas according to their properties:



Notice

Please keep the distance more than 10 mm between the food placed and air duct or sensors to ensure the cooling effect.



- 1 Butter, cheese, etc.
- 2 Eggs, cans, canned food, spices, etc.
- 3 Drinks and bottled foods.
- 4 Pickled foods, canned food, etc.
- 5 Meat products, snack foods, pasta, canned food, milk, tofu, dairy etc.
- 6 Cooked meat, sausages, etc.
- 7 Humidity zone drawer: Fruit, vegetables, salad, etc.
- 8 Humidity zone drawer: Fruit, vegetables, salad, etc.

Storage into the Switch Zone compartment

Switch Zone compartment allows you to adjust the temperature between -18°C to 5°C according to the demand of food storage and provide you with further flexibility in storage options for your convenience.

-18°C	For general frozen food items that require storage between 1 – 12 months .	Meat, poultry, seafood, pre-cooked foods and leftovers, some fruits and vegetable, ice cream, and other frozen desserts.
-7°C	Allows easy portioning of food and the ability to heat, cook or serve foods straight from the compartment without waiting for it to thaw.	Meats, seafood, soups, sauces, pureed foods, bread, desserts and pastries. Note: Recommended for storage of creamy desserts such as ice cream.
0°C	Providing the perfect storage zone for highly perishable food to ensure they retain their vital freshness and quality.	Highly perishable meats, poultry and seafood. Alcoholic beverages such as beer.
5°C	The ideal mode for fresh foods such as fruit and vegetables, dairy products, meats and drinks.	Fruit and vegetables, dairy products, jams and chutneys/preserves, meats and drinks.

Storage into the freezer compartment

- ▶ Keep the freezer temperature at -18°C.
- ▶ 24 hours before freezing switch on the Super-freeze function; -for small quantities of food 4-6 hours are sufficient.
- ▶ Hot food must be cooled to room temperature before storing in the freezer compartment.
- ▶ Food cut into small portions will freeze faster and be easier to defrost and cook. The recommended weight for each portion is less than 2.5 kg
- ▶ It is better to pack food before putting it into the freezer. The outside of the packaging must be dry to avoid bags sticking together. Packaging materials should be odour-free, airtight, non-poisonous and nontoxic.
- ▶ In order to avoid expiration of storage periods, please note the freezing date, time limit and name of the food on the packaging according to the storage periods of different foods.
- ▶ **WARNING!** Acid, alkali and salt etc. could erode the internal surface of the freezer. Do not place the food having these substances (e.g. sea fish) directly on the internal surface. Salt water in the freezer should be cleaned up immediately.
- ▶ Do not exceed the food storage times recommended by the manufacturers. Only take the required amount of food out of the freezer.
- ▶ Consume defrosted food quickly. Defrosted food cannot be re-frozen unless it is first cooked, otherwise it may be less edible.
- ▶ Do not load excessive quantities of fresh food in the freezer compartment. Refer to the freezing capacity of the freezer – See TECHNICAL DATA or data at the type plate.
- ▶ Food can be stored in the freezer at a temperature of at least -18°C for 2 to 12 months, depending on its properties (e.g., meat: 3-12 months, vegetables: 6-12 months)
- ▶ When freezing fresh food, avoid bringing it in contact with already frozen food. Risk of thawing!

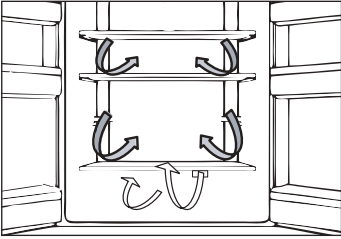
When storing commercially frozen foods, please follow these guidelines:

- ▶ Always follow manufacturers' guidelines for the length of time you should store food for. Do not exceed these guidelines!
- ▶ Try to keep the length of time between purchase and storage as short as possible to preserve food quality.
- ▶ Buy frozen foods, which have been stored at a temperature of -18°C or below.
- ▶ Avoid buying food which has ice or frost on the packaging – This indicates that the products might have been partially defrosted and refrozen at some point – temperature rises affect the quality of food.



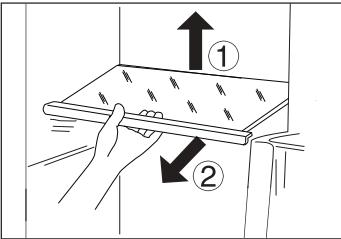
Notice

- ▶ Please keep the distance more than 10 mm between the food placed and air duct to ensure the cooling effect.



Multi-air-flow

The refrigerator is equipped with a multi-air-flow system, with which cool air flows are located on every shelf level. This helps to maintain a uniform temperature to ensure that your food is kept fresher for longer.



Adjustable shelves

The height of the shelves can be adjusted to fit your storage needs.

1. To relocate a shelf, remove it first by uplifting its hind edge (1) and pulling it out (2).
2. To reinstall it, put it on the lugs on both sides and push it to the most rearward position until the rear of the shelf is fixed inside the slots in the sides



Notice:

Ensure that all ends of a shelf are level.

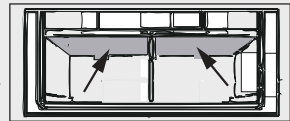
Humidity zone drawer

In this compartment the humidity level is around 85%. It is controlled automatically by the system and is suitable to store fruits, vegetables, salads etc.



Notice:

- ▶ Do not remove the plastic cover inside the two zones. They maintain the humidity.
- ▶ Cold-sensitive fruits like pineapple, avocado, bananas, grapefruits and vegetables such as potatoes, aubergines, beans, cucumbers, zucchini and tomatoes and cheese should not be stored in these two drawers.



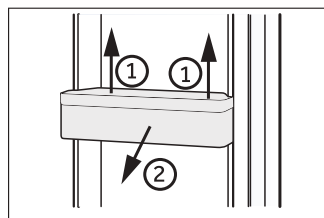
Equipment

Removable door shelves

The door shelves can be removed for cleaning:

Place hands on each side of the shelves, lift it upwards (1) and pull it out (2).

In order to insert the door shelves, the above steps are carried out in reverse order.



The Light

The LED interior light comes on when the door is opened and it will automatically go off if the door is left open for more than 7 minutes. The performance of the lights is not affected by any of the appliances other settings.



Energy saving tips

- ▶ Make sure the appliance is properly ventilated (see INSTALLATION).
- ▶ Do not install the appliance in direct sunlight or in the near of heat sources (e.g. stoves, heaters).
- ▶ Avoid unnecessarily low temperature in the appliance. The energy consumption increases the lower the temperature in the appliance is set.
- ▶ Functions like Super- Freeze consume more energy.
- ▶ Allow warm food to cool down before placing it in the appliance.
- ▶ Open the appliance door as little and as briefly as possible.
- ▶ Do not overfill the appliance to avoid obstructing the air flow.
- ▶ Avoid air within the food packaging.
- ▶ Keep door seals clean so that the door always closes correctly.
- ▶ Defreeze frozen food in the fridge storage compartment.
- ▶ The most energy-saving configuration requires the appliance keep drawers, food box and shelves on factory-fresh condition, and food should be places as far as possible without blocking the air outlet of the duct.

Care and cleaning



WARNING!

Disconnect the appliance from the power supply before cleaning.

Cleaning

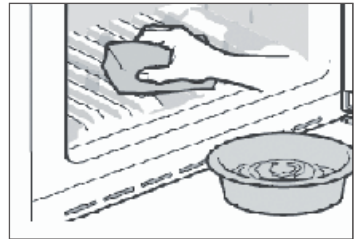
Clean the appliance when only little or no food is stored.

The appliance should be cleaned every four weeks for good maintenance and to prevent bad stored food odors.



WARNING!

- ▶ Do not clean the appliance with hard brushes, wire brushes, detergent powder, petrol, amyl acetate, acetone and similar organic solutions, acid or alkaline solutions. Please clean with special refrigerator detergent to avoid damage.
 - ▶ Do not spray or flush the appliance during cleaning.
 - ▶ Do not use water spray or steam to clean the appliance.
 - ▶ Do not clean the cold glass shelves with hot water. Sudden temperature change may cause the glass to break .
 - ▶ Do not touch the inside surface of the freezer storage compartment, especially with wet hands, as your hands may freeze onto the surface.
 - ▶ In case of heating check the condition of frozen goods.
-
- ▶ Always keep the door gasket clean.
 - ▶ Clean the inside and housing of the appliance with a sponge dampened in warm water and neutral detergent.
 - ▶ Rinse and dry with soft cloth.
 - ▶ Do not clean any of the parts of the appliance in a dishwasher.
 - ▶ Allow at least 5 minutes before restarting the appliance as frequent starting may damage the compressor.



Defrosting

The defrosting of the refrigerator and the freezer compartment are done automatically; no manual operation is needed.

Replacing the LED light



WARNING!

Do not replace the LED light yourself, it must only be replaced by either the manufacturer or the authorised service agent.

The light adopts LED as its light source, featuring low energy consumption and long service life. If there is any abnormality, please contact the customer service. See CUSTOMER SERVICE.

Parameters of the lamp:

Refrigerator compartment: 12 V max 5 W

Non-use for a longer period

If the appliance is not used for an extended period of time, and you will not use only the Holiday-function or the fridge off function for the refrigerator:

- ▶ Take out the food.
- ▶ Unplug the power cord.
- ▶ Clean the appliance as described above.
- ▶ Keep the doors open to prevent the creation of bad odours inside.

Troubleshooting

Many occurring problems could be solved by yourself without specific expertise. In case of a problem please check all shown possibilities and follow below instructions before you contact an after sales service. See CUSTOMER SERVICE.



WARNING!

- ▶ Before maintenance, deactivate the appliance and disconnect the mains plug from the mains socket.
- ▶ Electrical equipment should be serviced only by qualified electrical experts, because improper repairs can cause considerable consequential damages.
- ▶ A damaged supply should only be replaced by the manufacturer, its service agent or similarly qualified persons in order to avoid a hazard.

Problem	Possible Cause	Possible Solution
The compressor does not work.	<ul style="list-style-type: none"> • Mains plug is not connected in the mains socket. • The appliance is in the defrosting cycle 	<ul style="list-style-type: none"> • Connect the mains plug. • This is normal for an automatic defrosting
The appliance runs frequently or runs for a too long period of time.	<ul style="list-style-type: none"> • The indoor or outdoor temperature is too high. • The appliance has been off power for a period of time. • A door/drawer of the appliance is not tightly closed. • The door/drawer has been opened too frequently or for too long. • The temperature setting for the freezer compartment is too low. • The door/drawer gasket is dirty, worn, cracked or mismatched. • The required air circulation is not guaranteed. 	<ul style="list-style-type: none"> • In this case, it is normal for the appliance to run longer. • Normally, it takes 8 to 12 hours for the appliance to cool down completely. • Close the door/drawer and ensure the appliance is located on a level ground and there is no food or container jarring the door. • Do not open the door/drawer too frequently. • Set the temperature higher until a satisfactory refrigerator temperature is obtained. It takes 24 hours for the refrigerator temperature to become stable. • Clean the door/drawer gasket or replace them by the customer service. • Ensure adequate ventilation.
The inside of the refrigerator is dirty and/or smells.	<ul style="list-style-type: none"> • The inside of the refrigerator needs cleaning. • Food of strong odour is stored in the refrigerator. 	<ul style="list-style-type: none"> • Clean the inside of the refrigerator. • Wrap the food thoroughly..

Troubleshooting

Problem	Possible Cause	Possible Solution
It is not cold enough inside the appliance.	<ul style="list-style-type: none"> The temperature is set too high. Too warm goods has been stored. Too much food has been stored at one time. The goods are too close to each other. A door/drawer of the appliance is not tightly closed. The door/drawer has been opened too frequently or for too long. 	<ul style="list-style-type: none"> Reset the temperature. Always cool down goods before storing them. Always store small quantities of food. Leave a gap between several foods allowing air flowing. Close the door/drawer. Do not open the door/drawer too frequently.
It is too cold inside the appliance.	<ul style="list-style-type: none"> The temperature is set too low. The Power- freeze function is activated or is running too long. 	<ul style="list-style-type: none"> Reset the temperature. Switch off the Power- freeze function
Moisture formation on the inside of the refrigerator compartment.	<ul style="list-style-type: none"> The climate is too warm and too damp. A door/drawer of the appliance is not tightly closed. The door/drawer has been opened too frequently or for too long. Food containers or liquids are left open. 	<ul style="list-style-type: none"> Increase the temperature. Close the door/drawer. Do not open the door/drawer too frequently. Let hot foods cool to room temperature and cover foods and liquids.
Moisture accumulates on the refrigerator outside surface or between the doors/door and drawer.	<ul style="list-style-type: none"> The climate is too warm and too damp. The door/drawer is not closed tightly. The cold air in the appliance and the warm air outside it condensates. 	<ul style="list-style-type: none"> This is normal in damp climate and will change when the humidity decreases. Ensure that the door/drawer is tightly shut.
Strong ice and frost in the freezer compartment.	<ul style="list-style-type: none"> The goods were not adequately packaged. A door/drawer of the appliance is not tightly closed. The door/drawer has been opened too frequently or for too long. The door/drawer gasket is dirty, worn, cracked or mismatched. Something on the inside prevents the door/drawer to close properly. 	<ul style="list-style-type: none"> Always pack the goods well. Close the door/drawer. Do not open the door/drawer too frequently. Clean the door/drawer gasket or replace them by new ones. Reposition the shelves, door racks, or internal containers to allow the door/drawer to close.
The sides of the cabinet and door strip get warm.	<ul style="list-style-type: none"> - 	<ul style="list-style-type: none"> This is normal.

Troubleshooting

Problem	Possible Cause	Possible Solution
The appliance makes abnormal sounds.	<ul style="list-style-type: none">• The appliance is not located on level ground.• The appliance touches some object around it.	<ul style="list-style-type: none">• Adjust the feet to level the appliance.• Remove objects around the appliance.
A slight sound is to be heard similar to that of flowing water.	<ul style="list-style-type: none">• -	<ul style="list-style-type: none">• This is normal.
You will hear an alarm beep.	<ul style="list-style-type: none">• The fridge storage compartment door is open.	<ul style="list-style-type: none">• Close the door or silence the alarm manually.
You will hear a faint hum.	<ul style="list-style-type: none">• The anti-condensation system is working	<ul style="list-style-type: none">• This prevents condensation and is normal
The interior lighting or cooling system does not work.	<ul style="list-style-type: none">• Mains plug is not connected in the mains socket.• The power supply is not intact. • The LED-lamp is out of order.	<ul style="list-style-type: none">• Connect the mains plug. • Check the electrical supply to the room. Call the local electricity company!• Please call the service for changing the lamp.

Power interruption

In the event of a power cut, food should remain safely cold for about 12 hours. Follow these tips during a prolonged power interruption, especially in summer:

- ▶ Open the door/drawer as few times as possible.
- ▶ Do not put additional food into the appliance during a power interruption.
- ▶ If prior notice of a power interruption is given and the interruption duration is longer than 12 hours, make some ice and put it in a container in the top of the refrigerator compartment.
- ▶ An inspection of the goods is required immediately after the interruption.
- ▶ As temperature in the refrigerator will rise during a power interruption or other failure, the storage period and edible quality of food will be reduced. Any food that defrosts should be either consumed, or cooked and refrozen (where suitable) soon afterwards in order to prevent health risks.

Memory function during power interruption

After restoration of power the appliance continues with the settings that were set before the power failure.

Installation

Unpacking

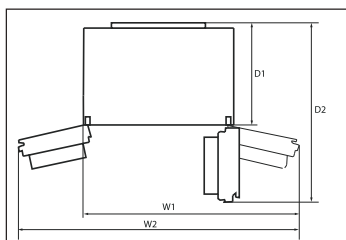


WARNING!

- ▶ The appliance is heavy. Always handle with at least two persons.
 - ▶ Keep all packaging materials out of children's reach and dispose them in an environmentally friendly manner.
-
- ▶ Take the appliance out of the packaging.
 - ▶ Remove all packaging materials.

Environmental conditions

The room temperature should always be between 16° C and 38° C, since it can influence the temperature inside the appliance and its energy consumption. Do not install the appliance near other heat-emitting appliances (ovens, refrigerators) without isolation.



Space requirement

Required space when door is opened:

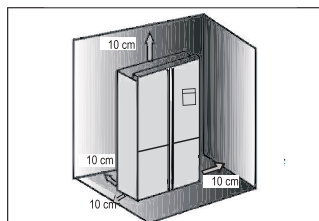
W1=1076mm

W2=1360mm

D1=628mm

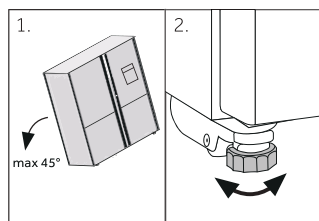
D2=1064mm

Notice: Dimensions above are for reference only. Please make the object as the standard.



Ventilation cross-section

To achieve sufficient ventilation of the appliance for safety reasons, the information of the required ventilation cross sections must be observed.



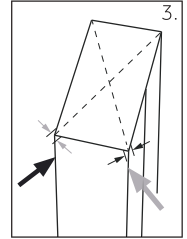
Aligning the appliance

The appliance should be placed on a flat and solid surface.

1. Tilt the appliance slightly backwards.
2. Set the feet to the desired level.

Make sure the distance to the wall on the hinge side is at least 10 mm for the door to open properly.

- The stability can be checked by alternately bumping on the diagonals. The slightly swaying should be the same in both directions. Otherwise the frame can warp; possible leaking door seals are the result. A low tendency to the rear facilitates the closing of the door.

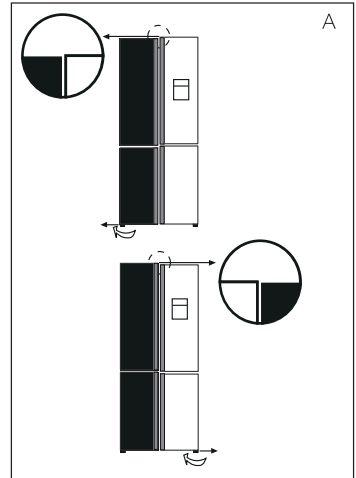


Fine tuning of the doors

If the doors are not in one level, this mismatch can be remedied by following:

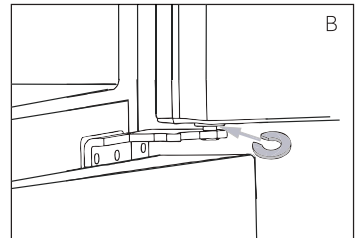
A) Using adjustable foot

Rotate the adjustable foot according to the direction of arrow to turn up or down the foot.



B) Using spacers

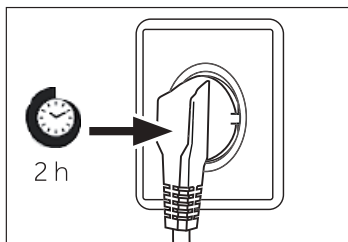
- ▶ Open the upper door and lift it.
- ▶ Carefully clip the spacer (enclosed in the accessory bag) in the white plastic ring of the middle hinge by hand or using tools like pliers. Do not scratch or bruise the door.



Notice

In the future use of refrigerator, doors uneven phenomenon may occur to the weight of stored food. Then please adjust according to the above methods.

Installation



Waiting time

To the maintenance-free lubrication oil is located in the capsule of the compressor. This oil can get through the closed pipe system during slanting transport. Before connecting the appliance to the power supply you have to wait 2-5 hours so that the oil runs back into the capsule.

Electrical connection

Before each connection check if:

- ▶ power supply, socket and fusing are appropriate to the rating plate.
- ▶ the power socket is earthed and no multi-plug or extension.
- ▶ the power plug and socket are strictly according.

Connect the plug to a properly installed household socket.



WARNING!

To avoid risks a damaged power cord must be replaced by the customer service (see warranty card).

Ice and Water and Automatic Ice models

- ▶ Your Ice and Water and Automatic Ice refrigerator must be installed by a qualified plumber or Haier trained and supported service technician as incorrect plumbing can lead to water leaks.
- ▶ Haier appliances does not accept responsibility for damage (including water damage) caused by faulty installation or plumbing.



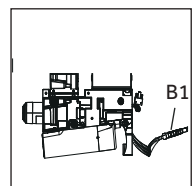
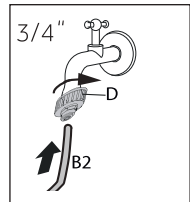
WARNING!

- ▶ Only connect to drinking water supply. The water filter only filters impurities in the water and makes ice clean and hygienic. It cannot sterilize or destroy germs or other harmful substances.
- ▶ Too high water pressure in the hose can damage the appliance. Install a pressure reducer when the water pressure in the hose exceeds 0.6 MPa.
- ▶ Before connection, check whether the water is clean and clear.



Notice: Water connection

- ▶ Pressure of the cold water has to be 0.15-0.6 MPa.
 - ▶ The maximum permitted length of water hose is 8 metres. Longer hoses will affect the ice cubes and cold water content.
 - ▶ Ambient temperature has to be 0°C minimum.
 - ▶ Keep the water hose away from heat sources.
1. Connect the end of pipe (B2) to one of the adapters "D" suits to the water main.
 2. Connect the end of B1 to the valve assembly at the back of appliance .
 3. Open the water tap to check if the system is leak free and flush the pipe.



WARNING!

- ▶ Ensure always that the connections are firm, dry and leak free!
- ▶ Take care the hose never to be crushed, kinked, or twisted

Technical data

Trade mark	Haier
Model No.	HRF580YPC/ HRF580YPS
Category of the model	Cooled Appliance
Voltage / Frequency	220V-240V~/50Hz
Energy Star	4 Stars
Frostfree system	Yes
Product group	5T
Total product volume	507L
Fresh food compartment volume	321L
Freezer compartment volume	87L
Convertible compartment volume	99L
Climate class	T
Refrigerant	R600a 76g
Insulation blowing gas	HC-C601
Dimension (DxWxH)	705x830x1775mm
Protection class	I



Haier