

Model	KV-ULTRA / KV-CORE / KV-PRO		
Language	English		
Page	24	Color(cover/body)	Black Printed
Material	Weight(offset) 80g/m2	Size(W*H)	148×210 (mm)
Issue Date	2021.01.29	Designer	P.T.VAN
Part No.	MFL70210204	Description	Owner's Manual

Change Record

No.	Change content	ECO No.	Date	Designer	Confirm
①	Change the nozzle content	EWJL300007	01.03.21	P.T.Van	T.Q.Thanh
②					
③					
④					
⑤					
⑥					
⑦					
⑧					
⑨					

T O L E R A N C E ± mm	CLASS RANGE	J	K	L	M	N	ANGLE		SLOPE
							JKL	MN	
	R<10	0.05	0.2	0.3	0.5	0.7	1°	6°	
10<R<30	0.1	0.3	0.5	0.8	1.2				
30<R<50	0.2	0.4	0.6	1.1	2.0	30°	3°		
50<R<150	0.3	0.6	0.8	1.4	2.5				
150<R<300	0.4	0.8	1.0	1.7	3.5	15°	1°		
300<R<500	0.6	1.2	1.5	2.0	4.5				
500<R	0.8	1.6	2.0	2.5	6.0	5°	30°		



OWNER'S MANUAL

VACUUM CLEANER



This information contains important instructions for the safe use and maintenance of the vacuum cleaner. Especially, please read all of the information on page 4, 5, 6, 7 for your safety. Please keep this manual in an easily accessible place and refer to it anytime.

KV-ULTRA
KV-CORE
KV-PRO



MFL70210204
Rev.01_022621

www.lg.com

Copyright © 2021 LG Electronics Inc. All Rights Reserved.

Specifications

Model	KV-ULTRA / KV-CORE / KV-PRO
Size (LxHxW)	450 mm x 310 mm x 280 mm
Product Weight	6.0 kg
Power Supply	220-240V~ 50 Hz

NEW TYPE CYCLONE VACUUM CLEANER

This information contains important instructions for the safe use and maintenance of the vacuum cleaner. Especially, please read all of the information on page 4, 5, 6, 7 for your safety. Please keep this manual in an easily accessible place and refer to it anytime.

Table of contents

Important safety instructions	4~7
How to use	8
Assembling vacuum cleaner	8~9
Operating vacuum cleaner	10~11
Using carpet and floor nozzle.....	12
Using carpet master nozzle	13
Corner free nozzle	14
Using 2 in 1 nozzle.....	15
Using accessory nozzles.....	16
Emptying dust tank	17
Cleaning dust tank	18
Cleaning air filter and motor safety filter	19~20
Cleaning exhaust filter	21
What to do if your vacuum cleaner does not work	22
What to do when suction power decreases	22

IMPORTANT SAFETY INSTRUCTIONS

Read and follow all instructions before using your vacuum cleaner to prevent the risk of fire, electric shock, personal injury, or damage when using the vacuum cleaner. This guide do not cover all possible conditions that may occur. Always contact your service agent or manufacturer about problems that you do not understand.



This is the safety alert symbol.

This symbol alerts you to potential hazards that can kill or hurt you and others.

All safety messages will follow the safety alert symbol and either the word "WARNING" or "CAUTION."

These words mean:



This symbol will alert you to hazards or unsafe practices which could cause serious bodily harm or death.



This symbol will alert you to hazards or unsafe practices which could cause bodily injury or property damage.

IMPORTANT SAFETY INSTRUCTIONS

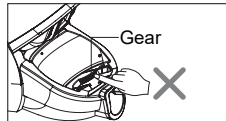
WARNING

1. This appliance is not intended for use by persons (including children) with reduced physical, sensory or mental capabilities, or lack of experience and knowledge, unless they have been given supervision or instruction concerning use of the appliance by a person responsible for their safety.
2. Children should be supervised to ensure that they do not play with the appliance.
3. If the supply cord is damaged, it must be replaced by LG Electronics Service Agent in order to avoid a hazard.
4. This appliance can be used by children aged from 8 years and above and persons with reduced physical, sensory or mental capabilities or lack of experience and knowledge if they have been given supervision or instruction concerning use of the appliance in a safe way and understand the hazards involved. Children shall not play with the appliance. Cleaning and user maintenance shall not be made by children without supervision.

IMPORTANT SAFETY INSTRUCTIONS

⚠ WARNING

- **Do not plug in if control knob is not in OFF position.**
Personal injury or product damage could result.
- **Keep children away and beware of obstructions when rewinding the cord to prevent personal injury.**
The cord moves rapidly when rewinding.
- **Disconnect electrical supply before servicing or cleaning the unit or when cleaner is not in use.**
Failure to do so could result in electrical shock or personal injury.
- **Do not use vacuum cleaner to pick up anything that is burning or smoking such as cigarettes, or hot ashes.**
Doing so could result in death, fire or electrical shock.
- **Do not vacuum flammable or explosive substances such as gasoline, benzene, thinners, propane (liquids or gases).**
The fumes from these substances can create a fire hazard or explosion. Doing so could result in death or personal injury.
- **Do not handle plug or vacuum cleaner with wet hands.**
Doing so could result in death or electrical shock.
- **Do not unplug by pulling on cord.**
Doing so could result in product damage or electrical shock. To unplug, grasp the plug, not the cord.
- **Keep hair, loose clothing, fingers, and all parts of the body away from openings and moving parts.**
Failure to do so could result in electrical shock or personal injury.
- **Do not pull or carry by cord, use cord as a handle, close a door on cord, or pull cord around sharp edges or corners. Do not run vacuum cleaner over cord. Keep cord away from heated surfaces.**
Failure to do so could result in electrical shock or personal injury or fire or product damage.
- **The hose contains electrical wires. Do not use it if it is damaged, cut punctured.**
Failure to do so could result in death, or electrical shock.
- **Do not allow to be used as toy. Close attention is necessary when used by or near children.**
Personal injury or product damage could result.
- **Do not use the vacuum cleaner if the power cord or plug is damaged or faulty.**
Personal injury or product damage could result. In these cases, contact LG Electronics Service Agent to avoid hazard.
- **Do not use vacuum cleaner if it has been under water.**
Personal injury or product damage could result. In these cases, contact LG Electronics Service Agent to avoid hazard.
- **Do not continue to vacuum if any parts appear missing or damaged.**
Personal injury or product damage could result. In these cases, contact LG Electronics Service Agent to avoid hazard.
- **Do not use an extension cord with this vacuum cleaner.**
Fire hazard or product damage could result.
- **Using proper voltage.**
Using improper voltage may result in damage to the motor and possible injury to the user. Proper voltage is listed on the bottom of vacuum cleaner.
- **Turn off all controls before unplugging.**
Failure to do so could result in electrical shock or personal injury.
- **Do not change the plug in any way.**
Failure to do so could result in electrical shock or personal injury or product damage. Doing so result in death. If plug does not fit, contact a qualified electrician to install the proper outlet. If the supply cord is damaged, it must be replaced by the manufacturer, its service agent or similarly qualified persons in order to avoid a hazard.
- **Repairs to electrical appliances may only be performed by qualified service engineers.**
Improper repairs may lead to serious hazards for the user.
- **Do not put fingers near the gear.**
Failure to do so could result in personal injury.



IMPORTANT SAFETY INSTRUCTIONS

CAUTION

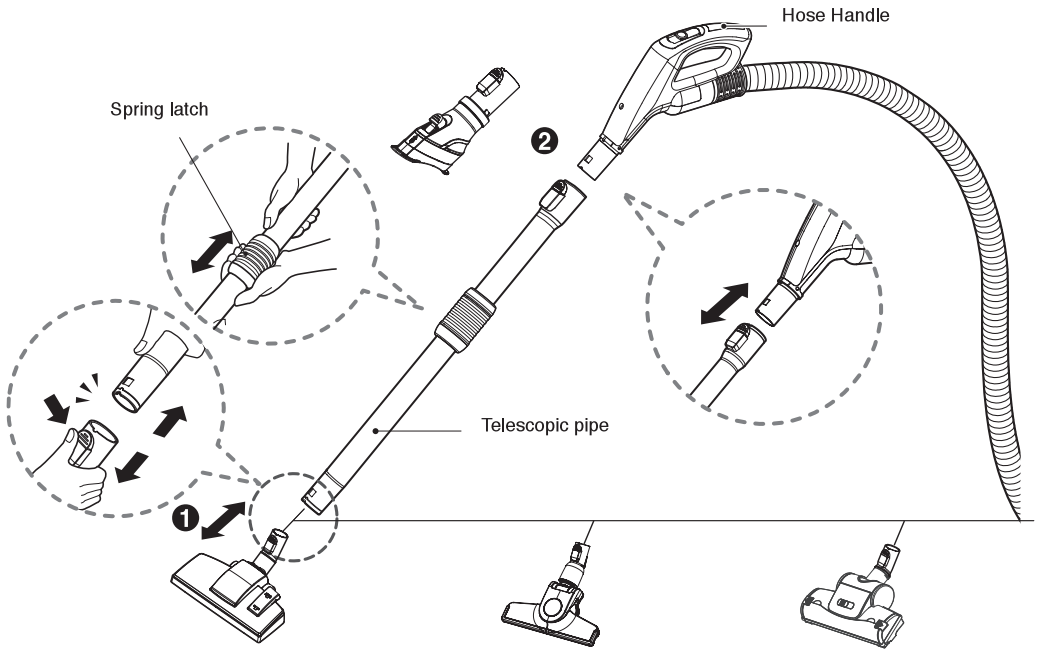
- **Do not put any objects into openings.**
Failure to do so could result in product damage.
- **Do not use with any opening blocked: keep free of dust, lint, hair, and anything that may reduce air flow.**
Failure to do so could result in product damage.
- **Do not use vacuum cleaner without the dust tank and/or filters in place.**
Failure to do so could result in product damage.
- **Always clean the dust bin after vacuuming carpet cleaners or fresheners, powders and fine dust.**
These products clog the filters, reduce airflow and can cause damage to the cleaner. Failure to clean the dust bin could cause permanent damage to the cleaner.
- **Do not use vacuum cleaner to pick up sharp hard objects, small toys, pins, paper clips, etc.**
They may damage the cleaner or dust bin.
- **Store the vacuum cleaner indoors.**
Put the vacuum cleaner away after use to prevent tripping over it.
- **The vacuum cleaner is not intended to use by young children or infirm people without supervision.**
Failure to do so could result in personal injury or product damage.
- **Only use parts produced or recommended by LG Electronics Service Agents.**
Failure to do so could result in product damage.
- **Use only as described in this manual. Use only with LG recommended or approved attachments and accessories.**
Failure to do so could result in personal injury or product damage.
- **To avoid personal injury and to prevent the machine from falling when cleaning stairs, always place it at the bottom of stairs.**
Failure to do so could result in personal injury or product damage.
- **Use accessory nozzles in sofa mode.**
Failure to do so could result in product damage.
- **Don't grasp the tank handle when you are moving the vacuum cleaner.**
The vacuum cleaner's body may fall when separating tank and body. Personal injury or product damage could result. You should grasp the carrier handle when you are moving the vacuum cleaner. (Page 16)
- **Make sure the filters (exhaust filter and motor safety filter) are completely dry before replacing in the machine.**
Failure to do so could result in product damage.
- **Do not dry the filter in an oven or microwave.**
Failure to do so could result in fire hazard.
- **Do not dry the filter in a clothes dryer.**
Failure to do so could result in fire hazard.
- **Do not dry near an open flame.**
Failure to do so could result in fire hazard.
- **Do not use filters that is not dried.**
- **If the power cord is damaged, it must be replaced by an approved LG Electronics Service Agent to avoid a hazard.**
- **This appliance is not intended for use by persons (including children) with reduced physical, sensory or mental capabilities, or lack of experience and knowledge, unless they have been given supervision or instruction concerning use of the appliance by a person responsible for their safety.**
Children should be supervised to ensure that they do not play with the appliance.

Thermal protector:

This vacuum cleaner has a special thermostat that protects the vacuum cleaner in case of motor overheating. If the vacuum cleaner suddenly shuts off, turn off the switch and unplug the vacuum cleaner. Check the vacuum cleaner for possible source of overheating such as a full dust tank, a blocked hose or clogged filter. If these conditions are found, fix them and wait at least 30 minutes before attempting to use the vacuum cleaner. After the 30 minute period, plug the vacuum cleaner back in and turn on the switch.

If the vacuum cleaner still does not run, contact a qualified electrician.

How to use Assembling vacuum cleaner



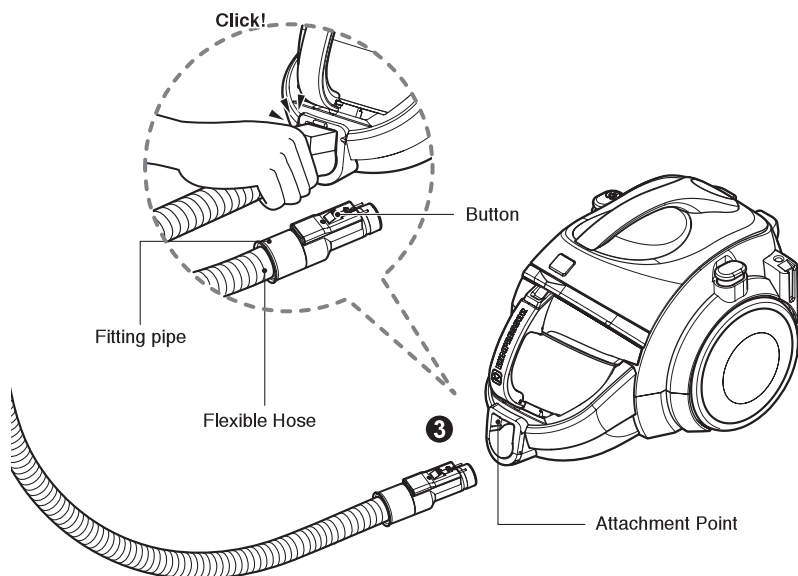
1 Carpet and floor nozzle (depend on model)

Push the nozzle into the telescopic pipe.

2 Telescopic pipe

- Push telescopic pipe firmly into hose handle.
- Grasp the spring latch to expand.
- Pull out the pipe to desired length.

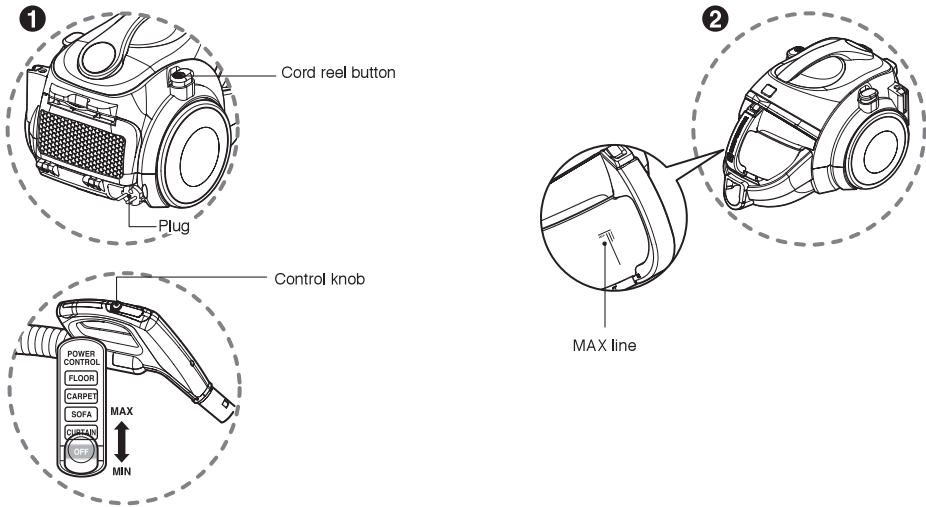
How to use Assembling vacuum cleaner



3 Connecting the hose to the vacuum cleaner

Push the fitting pipe on the flexible hose into the attachment point on the vacuum cleaner. To remove the flexible hose from the vacuum cleaner, press the button situated on the fitting pipe, then pull the fitting pipe out of the vacuum cleaner.

How to use Operating vacuum cleaner



1 How to operate

- Pull out the power cord to the desired length and plug into the socket.
- Slide the control knob of the hose handle to operate vacuum cleaner.
- To turn off, slide the control knob to off position.
- Press the cord reel button to rewind the power cord after use.

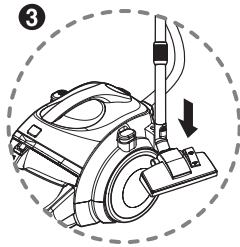
2 Emptying the dust tank

- Always empty the dust tank when the dust tank level reaches the MAX line.

⚠ WARNING

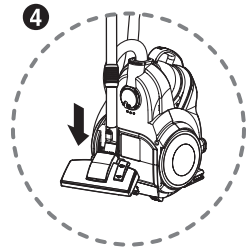
No liquid suction.
Liquid suction can cause defects.

How to use Operating vacuum cleaner



3 Park mode

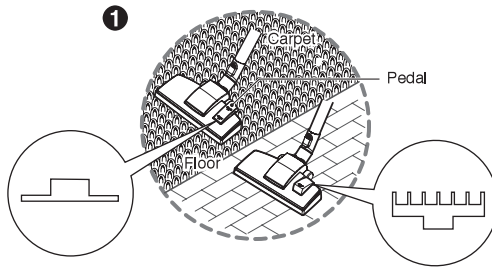
- Slide the control knob to off position before park.
- To store during vacuuming, for example to move a small piece of furniture or a rug, use park mode to support the flexible hose and nozzle.
- Slide the hook on the nozzle into the slot on the side of vacuum cleaner.



4 Storage

- When you have switched off and unplugged the vacuum cleaner, press the cord reel button to automatically rewind the cord.
- You can store your vacuum cleaner in a vertical position by sliding the hook on the nozzle into the slot on the underside of the vacuum cleaner.

How to use Using carpet and floor nozzle



1 Carpet and floor nozzle(depend on model)


• The 2 position nozzle

This is equipped with a pedal which allows you to alter its position according to the type of floor to be cleaned.

• Carpet or rug position

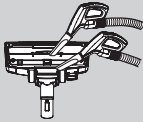
Press the pedal () to lower brush.

• Hard floor position (tiles, parquets floor)

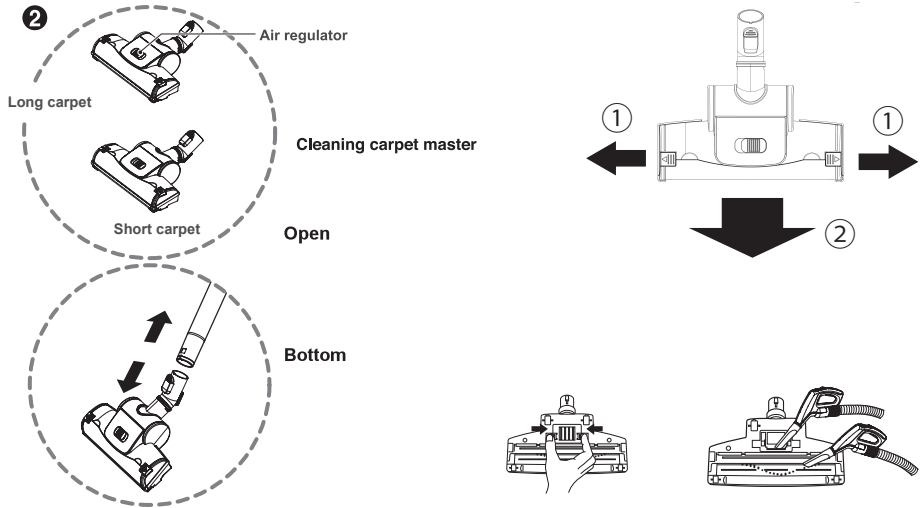
Press the pedal () to lift the brush up.

• Cleaning carpet and floor nozzle

- Clean the hole and brush of nozzle.



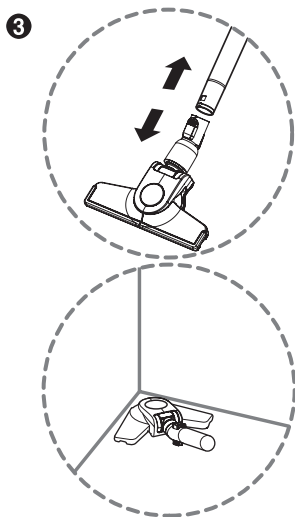
How to use Using carpet master nozzle



② Carpet master (depend on model)

- **Cleaning turbine brush nozzle.**
- Press the button on the rear side of the nozzle to separate the air cover.
- Use the crevice tool to clean the brush and the fan.
- Release the hooks to take off the cover.

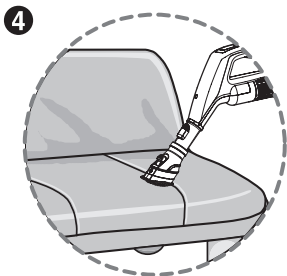
How to use Corner free nozzle



③ Corner free nozzle (depend on model)

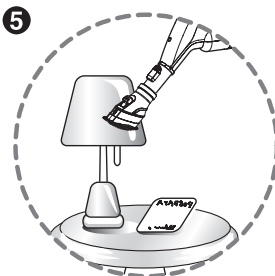
- You can perform cleaning at any place such as corner or narrow crack by utilizing the structure that both sides of the suction hole are leaned back.

How to use Using 2 in 1 nozzle



④ Upholstery nozzle(depend on model)

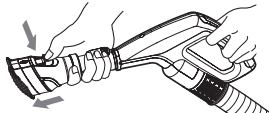
Upholstery nozzle is for vacuuming upholstery, mattresses etc.



⑤ Dusting brush(depend on model)

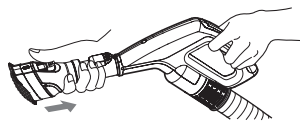
Dusting brush is for vacuuming picture frames, furniture frames, books and other irregular surfaces.

Push the button

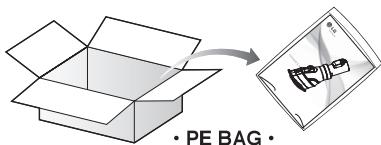


< Upholstery nozzle mode >

Pull the cover

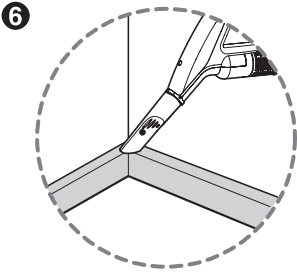


< Dusting brush mode >



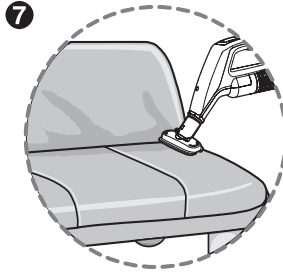
• 2 in 1 nozzle included in the "PE BAG" with owner's manual (depend on model)

How to use Using accessory nozzles



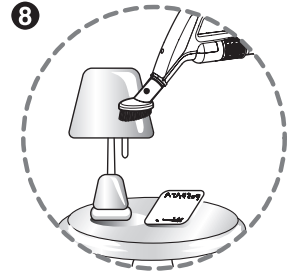
6 Crevice tool(depend on model)

Crevice tool is for vacuuming in those normally hard-to-reach places such as reaching cobwebs or between the cushions of sofa.



7 Upholstery nozzle (depend on model)

Upholstery nozzle is for vacuuming upholstery, mattresses etc. The thread collectors help to pick up the threads and fluff.

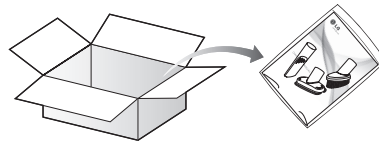
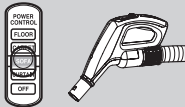


8 Dusting brush (depend on model)

Dusting brush is for vacuuming picture frames, furniture frames, books and other irregular surfaces.

NOTICE

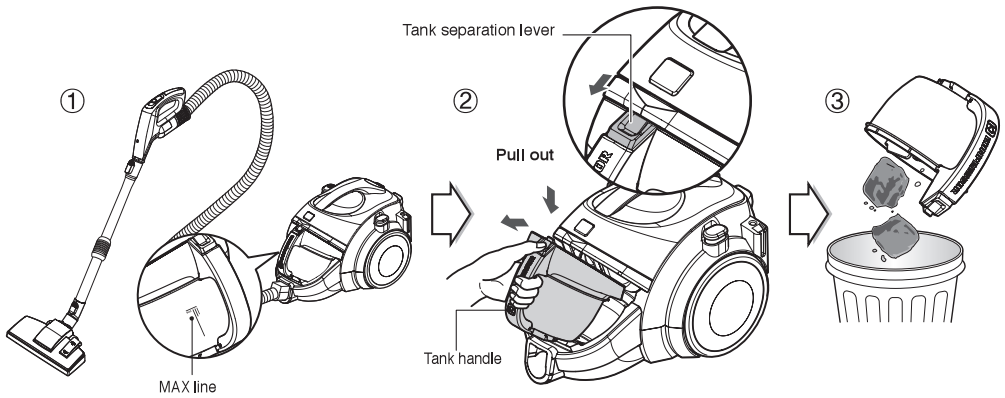
Use accessory in the sofa mode.



• PE BAG •

• Accessory nozzles included in the "PE BAG" with owner's manual (depend on model)

How to use Emptying dust tank



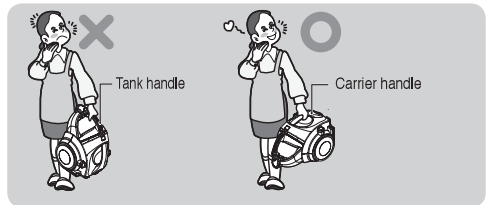
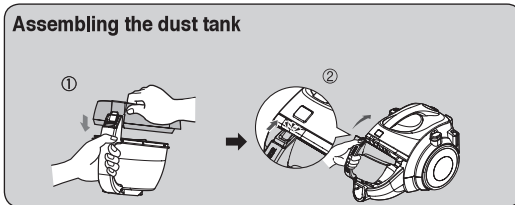
The dust tank needs emptying when the dust tank level reaches the MAX line.

- ① Turn off the vacuum cleaner and unplug it.
- ② Grasp the handle of the tank and then press the tank separation lever. Pull out the dust tank.
- ③ Empty the tank and then assemble the dust tank as below.

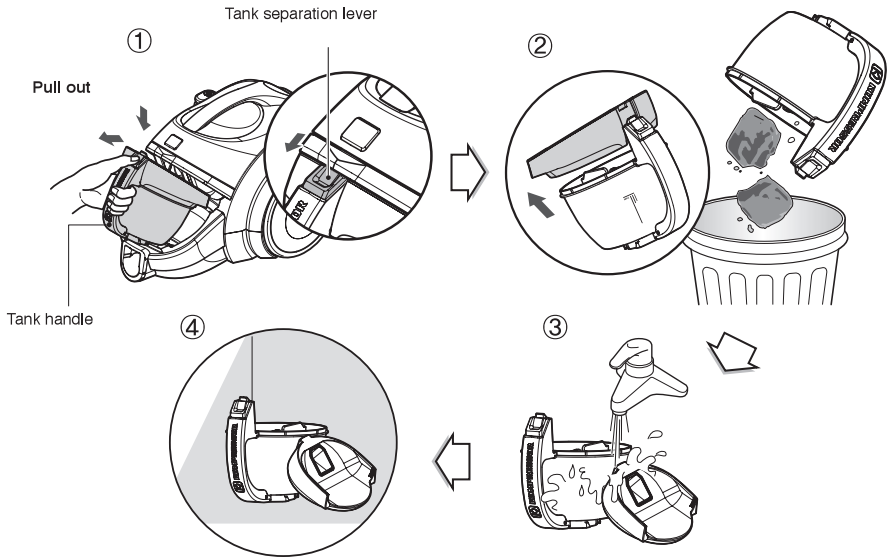
Moving the vacuum cleaner

- Don't grasp the tank handle when you are moving the vacuum cleaner. The vacuum cleaner's body may fall when separating tank and body.
- You should grasp the carrier handle when you are moving the vacuum cleaner.

Assembling the dust tank



How to use Cleaning dust tank

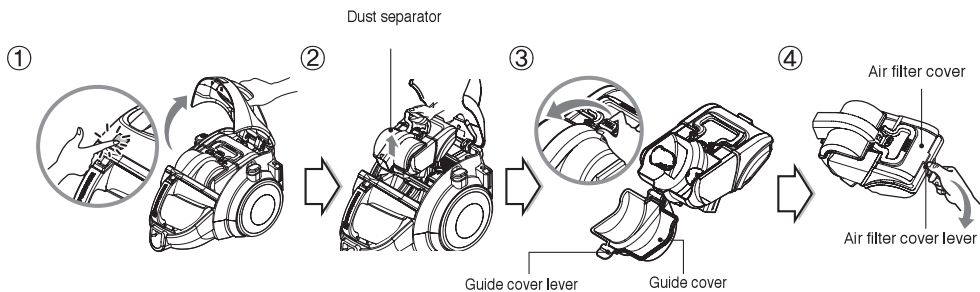


- ① Press tank separation lever and pull out dust tank.
- ② Raise dust tank cap.
- ③ Wash dust tank.
- ④ Dry fully in shade so that moisture is entirely removed.

NOTICE

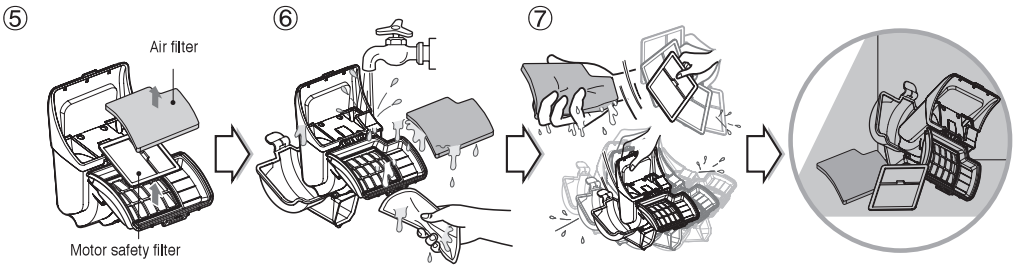
If suction power decreases after cleaning the dust tank, clean the air filter and the motor safety filter. ➔ Next page

How to use Cleaning air filter and motor safety filter



- ① Open the vacuum cleaner cover by pushing the button.
- ② Grasp the handle of the dust separator and take it out.
- ③ Open the guide cover by pulling the guide cover lever and remove the dust.
- ④ Open the air filter cover by pushing the air filter cover lever and take out the air filter.

How to use Cleaning air filter and motor safety filter



WARNING

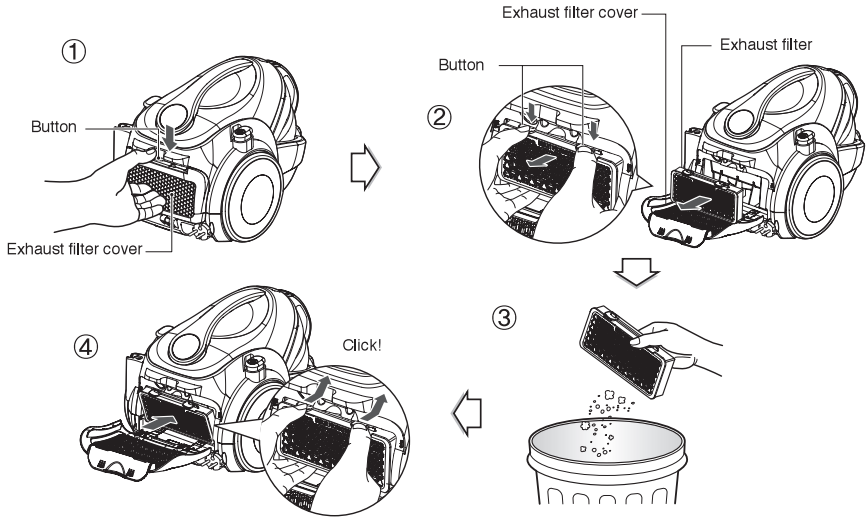
Dry fully for more than 24 hours in shade.

- ⑤ Separate the motor safety filter from the dust separator.
- ⑥ Wash the air filter and the motor safety filter.
Do not wash filters with hot water.
- ⑦ Dry fully in shade so that moisture is entirely removed.
The air filter and the motor safety filter should be cleaned as above the figure.

NOTICE

If filters are damaged, do not use them.
In this cases, contact LG Electronics Service Agent.
Wash filters at least once a month.

How to use Cleaning exhaust filter



• The exhaust filter is reusable.

- ① To clean the exhaust filter, remove the exhaust filter cover on the body by pulling it out.
- ② Separate the exhaust filter.
- ③ Dust off filter. (Do not wash filter with water.)
- ④ Insert the projection of exhaust filter into the grooves on the body and push up the exhaust filter button certainly until you hear sound "click".

Exhaust filter cover assembling

- Fit exhaust filter cover lugs to the grooves of vacuum cleaner body.
- Join it the body.

NOTICE

The exhaust filter should be cleaned at least once a month.

What to do if your vacuum cleaner does not work

Check that the vacuum cleaner is plugged in correctly and that the electrical socket is working.

What to do when suction power decreases

- Turn off the vacuum cleaner and unplug it.
- Check the telescopic pipe, flexible hose and cleaning tool for blockages or obstructions.
- Check that the dust tank is not full. Empty if necessary.
- Check that the exhaust filter is not clogged. Clean the exhaust filter if necessary.
- Check that the air filter and the motor safety filter are not clogged. Clean them if necessary.
- Check the inside of the dust separator. Clean the inside of the dust separator if necessary.



Disposal of your old appliance

1. This crossed-out wheeled bin symbol indicates that waste electrical and electronic products (WEEE) should be disposed of separately from the municipal waste stream.
2. Old electrical products can contain hazardous substances so correct disposal of your old appliance will help prevent potential negative consequences for the environment and human health. Your old appliance may contain reusable parts that could be used to repair other products, and other valuable materials that can be recycled to conserve limited resources.
3. Contact your local government waste office for details of your nearest authorised WEEE collection point. For the most up to date information for your country please see www.lg.com/global/recycling

Note

