

Before the first use

⚠ Damage resulting from incorrect installation and connection. Installing and connecting the washing machine incorrectly will cause serious damage. Please read the separate operating instructions supplied with the appliance.

⚠ Damage resulting from failure to remove the transit bars. Failure to remove the transit bars can result in damage to the washing machine and to adjacent cabinetry or appliances. Please read the separate operating instructions supplied with the appliance.

Running the first programme

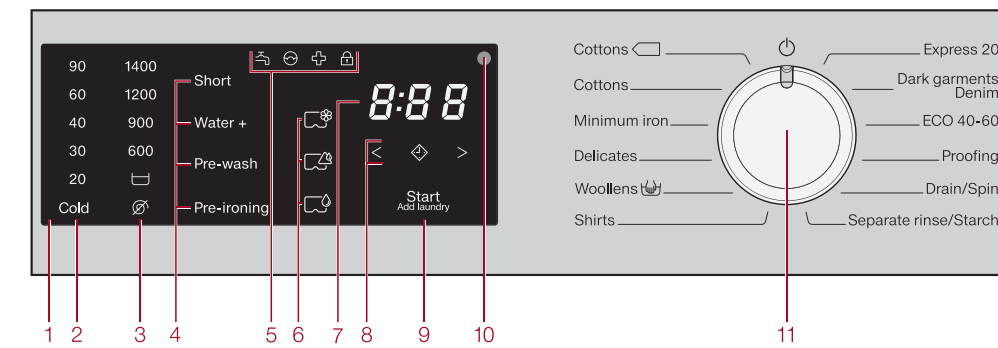
- Turn on the tap.
- Turn the programme selector to *Cottons*. The washing machine is now switched on and the temperature 60°C lights up on the control panel.
- Touch the *Start/Add laundry* sensor. The programme will start.

Opening the door at the end of the programme

The door remains locked during the Anti-crease phase. The control panel lights up for the first 10 minutes. The control panel then goes out and the *Start/Add laundry* sensor flashes.

- Turn the programme selector to the \odot position.
- D- appears in the display and the \odot indicator light goes out. The door will unlock.
- Reach under the door grip and pull the door open.
- Note:** For safety reasons close the door.

Operating the washing machine



- Control panel**
- Temperature sensors** for selecting the temperature
- Spin speed sensors** for selecting the spin speed
- Extras sensors**
Various Extras can be added to the wash programmes.
- Indicator lights**
 - H_2O = water inlet or outlet faults
 - \odot = lights up if excess detergent was used
 - \oplus = lights up as a reminder about hygiene information
 - \odot = the Add laundry function cannot be selected.
- CapDosing sensors**
 - H_2O = Fabric care (e.g. fabric softener)
 - H_2O = Additives (e.g. detergent enhancers)
 - H_2O = Detergent (for the main wash only)
- Time display**
After the programme has started, the programme duration will be shown in the display in hours and minutes.
- < > sensors** for the Delay start function
- Start/Add laundry sensor**
 - A Touching the *Start/Add laundry* sensor starts a programme. The sensor lights up constantly.
 - B Once the programme has started, the *Start/Add laundry* sensor allows you to add laundry.
- Optical interface** for service technicians
- Programme selector** for selecting programmes and for switching the washing machine off. The washing machine is switched on by selecting a programme, and switched off by turning the programme selector to the \odot position.

Washing environmentally and economically

- Programmes that are more efficient with regard to energy and water consumption generally have a longer running time. By extending the programme running time, the wash temperature that is actually reached can be reduced while still providing the same wash results.
- For example, the Cottons 40°C programme has a longer running time than the Cottons 40°C or 60°C programme, but the Cottons 40°C programme is more efficient in terms of energy and water consumption.
- To get the most out of your machine, load the maximum dry load for the programme you are using.
- Use the *Express 20* programme for small, lightly soiled loads.

Washing

1. Preparing the laundry

- Empty all pockets.
- ⚠ Foreign objects (e.g. nails, coins, paper clips, etc.) can cause damage to garments and components in the machine.

- Sort the laundry by colour and by care label. Most garments have a textile care label in the collar or side seam.
- Pre-treat stains and badly soiled areas (Please refer to the Miele website or Miele@mobile App for more information on stain removal.).

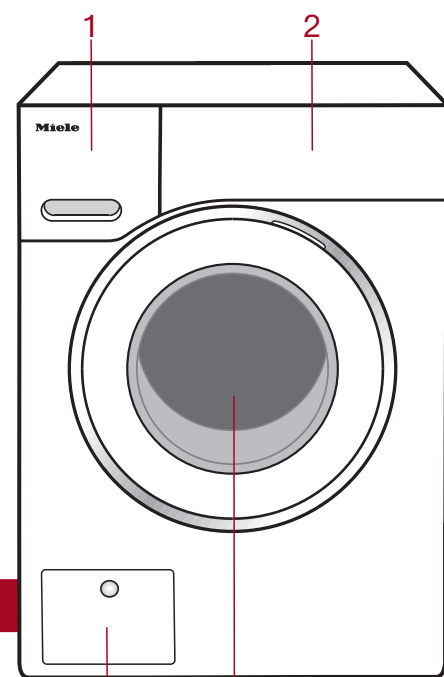
2. Loading the washing machine

Opening the door

- Reach under the door grip and pull the door open.
- Unfold the laundry and load loosely in the drum.

Closing the door

- Make sure that no items are caught between the door and the seal.
- Shut the door with a gentle swing.



- Detergent dispenser drawer**
- Control panel**
- Access to drain filter, drain pump and emergency release**
- Door**

3. Selecting a programme

The washing machine is switched on by turning the programme selector to a wash programme.

Programme selection

- Turn the programme selector to the required programme.



The likely wash time is shown in the time display and the pre-set temperature and spin speed light up on the control panel.

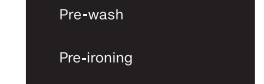
Selecting the temperature and spin speed

The wash programme's pre-set temperature and spin speed light up brightly. The choice of temperatures and spin speeds selectable for the wash programme light up dimly.



Selecting Extras

The selection of Extras available for the wash programme lights up dimly.



Tip: You can select multiple Extras for a wash programme.

4. Adding detergent

There are several options for adding detergent.

Detergent dispenser drawer

- Pull out the detergent dispenser drawer and add detergent to the compartments.

- H_2O Detergent for the pre-wash
- H_2O Detergent for the main wash
- H_2O Fabric softener, liquid starch or capsules

CapDosing

- Three different types of capsules are available:
- H_2O Fabric care (e.g. fabric softener)
- H_2O Additives (e.g. detergent enhancers)
- H_2O Detergent

See "Detergent" in the operating instructions for more information on detergents, capsules and dosage.

5. Starting the programme

- Touch the flashing *Start/Add laundry* sensor. The door will lock and the programme will start.

Adding laundry during a programme sequence

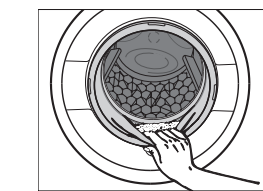
- Laundry can be added or removed at any time, provided that the \odot symbol is not lit up on the control panel.
- Touch the *Start/Add laundry* sensor. The display shows rotating bars $\text{L} \dots \text{L}$... $\text{L} \dots \text{L}$.
- When the word *Added* appears in the display, the door can be opened.
- Open the door and add or remove laundry.
- Close the door.
- Touch the *Start/Add laundry* sensor. The wash programme will continue.

6. At the end of the programme

- The door is locked in the Anti-crease phase.
- Turn the programme selector to the \odot position.
- D- appears in the display and the \odot indicator light goes out. The door will unlock.



Items left in the drum could shrink or discolor other items in the next wash. Remove all items from the drum.



- Check the folds in the door seal for any small articles, e.g. buttons, which might be lodged there.
- Note:** For safety reasons close the door.
- Remove any used capsules from the detergent dispenser drawer.
- Tip:** Leave the detergent dispenser drawer slightly open to allow it to dry.

Changing the programme (safety lock)

It is not possible to change the programme, the temperature, the spin speed or the selected Extras after the programme has started. This prevents the appliance being operated unintentionally, e.g. by children.

labelling Cancellng a programme

- You can cancel a programme at any time after it has started.
- Turn the programme selector to the \odot position.
- Turn the programme selector to any position.
- The display shows rotating bars $\text{L} \dots \text{L}$... $\text{L} \dots \text{L}$ or -D-.
- The water is pumped away and the door lock is released.

Selecting a new programme

- Turn the programme selector to the required programme.
- Check that there is still detergent in the dispenser drawer. Add more detergent if necessary.
- Touch the *Start/Add laundry* sensor.

Delay start/Extras

Delay start

With Delay start you can delay the start of a programme from 30 minutes up to a maximum of 24 hours. This allows you to make use of night-time economy electricity rates, for example.

Selecting Delay start

- Select the programme required.
- Touch the \diamond sensor.

labelling Cancelling a programme

- Touch the < or > sensor repeatedly until the required Delay start time appears in the time display.
- For less than 10 hours, the Delay start time changes in increments of 30 minutes.
- For more than 10 hours, the Delay start time changes in increments of 1 hour.
- Touch the flashing *Start/Add laundry* sensor.
- The Delay start process starts and counts down in the time display.
- Note:** Delay start cannot be selected with the *Drain/Spin* or *Proofing* programmes.

Extras

You can select or deselect Extras by touching the corresponding sensor on the control panel.

Short

For light soiling with no visible staining. The wash duration is reduced.

Water +

The water level in the main wash and the rinses will be increased. You can programme other options for the *Water + Extra*. These are described in "Programmable functions" in the operating instructions.

Pre-wash

For laundry with large amounts of dirt, e.g. dust and sand.

Pre-ironing

In order to reduce creasing, the laundry undergoes a smoothing process at the end of the programme. For optimal smoothing reduce the maximum load by 50%. Follow the instructions in the display. Small loads achieve a better result. The garments must be suitable for drying in a tumble dryer H_2O H_2O and suitable for ironing H_2O H_2O .

Programme chart

Programme	Load (in kg)	Temperature	Items	Extra
Cottons	8.0	60°C/40°C	Normally soiled cotton garments. These settings are the most efficient in terms of energy and water consumption for washing cottons.	(A), (B), (C), (D)
Cottons	8.0	Cold to 90°C	Cottons, linens or cotton mix fabrics, e.g. table linen, towelling, underwear, T-shirts etc.	(A), (B), (C), (D)
Minimum iron	3.5	Cold to 60°C	Synthetic and mixed fibre textiles and easy care cotton.	(A), (B), (C), (D)
Delicates	2.0	Cold to 40°C	Delicate garments made from synthetic fibre, mixed fibre, rayon and viscose. Performance outerwear (e.g. jackets and trousers) made from membrane fabric such as Gore-Tex®, SYMPATEX®, WINDSTOPPER®, etc. Curtains, including net curtains, specified as machine-washable by the manufacturer. Machine-washable or hand-washable wool or wool blend fabric. If the care label does not specify a temperature, wash using the cold setting.	(A), (B), (C), (D)
Woolens	2.0	Cold to 40°C	Shirts and blouses made of cotton and mixed fibre. Wash silk shirts and blouses in the Delicates programme. If the preset Pre-ironing option is switched off, the maximum load capacity is increased to 2.0 kg.	(A), (B), (C), (D)
Shirts	1.0/2.0	Cold to 60°C	Shirts and blouses made of cotton and mixed fibre.	(A), (B), (C), (D)
Express 20	3.5	Cold to 40°C	Cotton garments that have hardly been worn or are only very lightly soiled.	(A)
Dark garments/ Denim	3.0	Cold to 60°C	Black and dark garments made from cotton, mixed fibres and denim.	(A), (B), (C), (D)
ECO 40-60	8.0		For moderately soiled cotton garments. A laundry load consisting of mixed cottons that are intended for washing at 40°C or 60°C can be washed in the same wash cycle.	(A), (B), (C), (D)
Proofing	2.5	40°C	Microfibre fabric, skiwear and table linen made from mainly synthetic fibres.	(A), (B), (C), (D)
Drain/ Spin	8.0		Drain only. Select for the spin speed.	(B)
Separate rinse/ Starch	8.0		For rinsing hand-washed items. For starching table cloths, serviettes and workwear.	(B)

(A) = Short; (B) = Water +; (C) = Pre-wash; (D) = Pre-ironing

PROGRAMME CHART

Detergent

Miele recommended detergents

Programmes	Miele detergents		Miele capsules		
	UltraWhite	UltraColor			
Cottons	✓	✓	-	✓	✓
Cottons	✓	✓	-	✓	✓
Minimum iron	-	✓	-	✓	✓
Delicates	-	✓	✓	✓	-
Woolens	-	-	✓	-	-
Shirts	✓	✓	-	✓	✓
Express 20	-	✓	-	✓	-
Dark garments/ Denim	-	✓	✓	✓	-
ECO 40-60	✓	✓	-	✓	✓
Drain/Spin	-	-	-	-	-
Separate rinse/ Starch	-/-	-/-	-/-	✓/-	-/-

- ✓ Recommended
- Not recommended

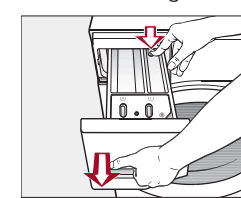
- Specialist detergents (e.g. WoolCare)
- Fabric care (e.g. fabric softener)
- Additive (e.g. booster)

Cleaning and care

Cleaning the detergent dispenser drawer

Washing at low temperatures and the use of liquid detergent can lead to a build-up of mould and bacteria in the detergent dispenser drawer.

- For hygiene reasons, clean the entire drawer at regular intervals.

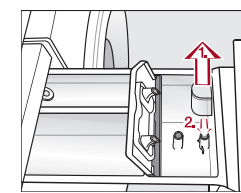


- Pull out the detergent dispenser drawer until a resistance is felt.

- Press down the release button and, at the same time, pull the drawer right out of the machine.

- Clean the detergent drawer with warm water.

Cleaning the siphon tube and the fabric softener channel



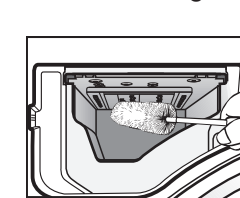
- Clean the siphon tube in the same way.
- Refit the siphon.



- Clean the fabric softener channel using a brush and warm water.

⚠ Liquid starch can cause the siphon to become clogged. Make sure that you clean the siphon and siphon tube particularly thoroughly after using liquid starch a few times.

Cleaning the detergent dispenser drawer housing



- Use a bottle brush to remove detergent residues and limescale from the jets inside the detergent dispenser drawer housing.

Cleaning the drum (Hygiene info)

Washing at low temperatures and/or using liquid detergent can cause bacteria and unpleasant odours to build up in the washing machine. Use the Cottons 90°C programme to clean the machine. This should be done at the latest when the indicator light comes on.

Problem solving guide

With the help of the following guide, minor faults in the performance of the appliance, some of which may result from incorrect operation, can be remedied without contacting Miele. This will save you time and money because you won't need a service call.

Problem/Fault message	Possible cause and remedy
The control panel remains dark.	There is no power to the machine. <ul style="list-style-type: none"> Check whether the mains plug is plugged in and switched on. Check whether the circuit breaker has tripped.

F and 34 appear alternately in the time display.	The door is not closed properly. The door lock could not engage. <ul style="list-style-type: none"> Close the door again. Restart the programme. If the fault message appears again, contact Miele.
---	--

The fault indicator light lights up, F and 11 appear alternately in the time display and the buzzer sounds.	The water outlet is blocked or restricted. The drain hose has been fixed too high. <ul style="list-style-type: none"> Clean the filters and the drain pump. The maximum drain height is 1 m.
---	---

The fault indicator light lights up, F and 10 appear alternately in the time display and the buzzer sounds.	The filter in the water inlet is blocked. <ul style="list-style-type: none"> Clean the filter (see the operating instructions).
---	---

The fault indicator light lights up, F and 138 appear alternately in the time display and the buzzer sounds.	The water protection system has reacted. The washing machine is switched off. <ul style="list-style-type: none"> Turn off the tap. Call Miele.
--	---

F and XXX appear alternately in the time display and the buzzer sounds.	There is a fault. <ul style="list-style-type: none"> Disconnect the washing machine from the electricity supply, either by switching it off at the wall socket and withdrawing the plug, or by disconnecting it at the circuit breaker. Wait at least 2 minutes before reconnecting the washing machine to the electricity supply. Then switch the washing machine back on. Restart the programme. If the fault message appears again, contact Miele.
--	--

Problem/Fault message -D- lights up.	Possible cause and remedy The programme selector was moved to a different position after the programme had started. <ul style="list-style-type: none"> Turn the programme selector back to the original position. The programme has been interrupted. <ul style="list-style-type: none"> Open the door. Close the door.
---	--

The indicator light lights up.	Excessive foam has built up during washing. <ul style="list-style-type: none"> Use less detergent next time and follow the manufacturer's instructions on dosage given on the packaging.
--	--

The indicator light lights up.	A programme using a temperature above 60°C has not been run for a long period of time. <ul style="list-style-type: none"> In order to prevent bacteria and unpleasant odours building up in the machine, run the Cottons 90°C programme using Miele washing machine cleaner or a universal powder detergent.
--	--

F and 37 appear alternately in the time display.	The Pre-ironing Extra which runs at the end of the programme could not be carried out properly. <ul style="list-style-type: none"> Check that the washing machine is standing level. Check whether the maximum delivery head of 1 m has been exceeded. If the fault message appears again, contact Miele. The washing machine can still be used, however without the Pre-ironing Extra.
---	--

After the programme is cancelled, flashing bars appear in the time display.	For safety reasons, the door cannot be opened if the suds temperature is higher than 55°C. <ul style="list-style-type: none"> Wait until the temperature in the drum has decreased and the bars have stopped flashing in the display.
---	---

F and 35 appear alternately in the time display.	The door lock has jammed. <ul style="list-style-type: none"> Call Miele.
---	--

The door cannot be pulled open during a programme.	The drum is locked during a programme. <ul style="list-style-type: none"> Follow the instructions in "5. Starting a programme – Adding or removing laundry".
---	--

Quick Start Guide Washing machine



These short instructions are not a substitute for the operating instructions supplied with the appliance. Please read the operating instructions supplied with your washing machine before using it for the first time and take note of the Warning and Safety instructions, as well as the full descriptions on how to use your appliance.