

Before the first use

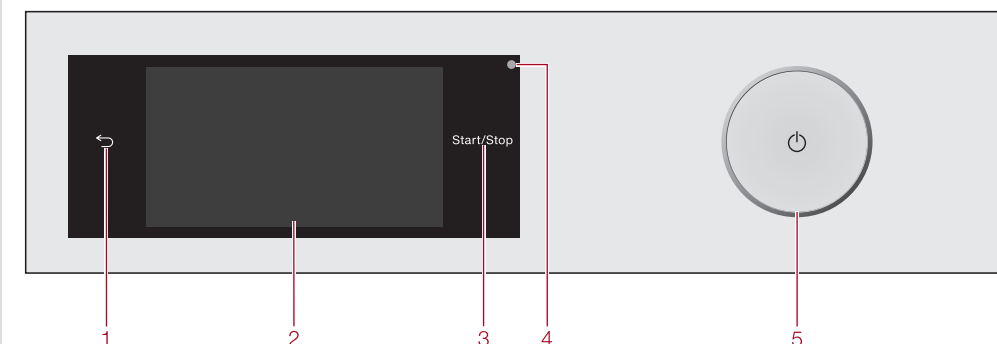
⚠ Damage resulting from incorrect installation and connection. Installing and connecting the washing machine incorrectly will cause serious damage. Please read the separate operating instructions supplied with the appliance.

⚠ Damage resulting from failure to remove the transit bars. Failure to remove the transit bars can result in damage to the washing machine and to adjacent cabinetry or appliances. Please read the separate operating instructions supplied with the appliance.

Switching on the washing machine

- Press the **Start/Stop** button.
- The welcome screen will light up. The display will guide you through the initial commissioning process, which is divided into 6 steps.
- For further information, please refer to the separate operating instructions.

Operating the washing machine



- 1 Sensor**
Takes you back a level in a menu.
- 2 Touch display**
- 3 Start/Stop sensor**
Touching the Start/Stop sensor starts the selected programme or cancels a programme that has already been started. The sensor flashes slowly as soon as it is possible for a programme to be started and then lights up constantly after the programme has started.
- 4 Optical interface**
For service technicians.
- 5 Button**
For switching the washing machine on and off. To save energy, the washing machine will switch off automatically. This occurs 15 minutes after the end of the programme/Anti-crease phase, or after being switched on if no further selection is made.

Main menu

After switching on the washing machine, the main menu will appear in the display. You access all the important sub-menus from the main menu.

Touch the **Home** sensor at any time to return to the main menu. Values set previously are not saved.

Programmes
For selecting the wash programme.

Favourite programmes
You can save up to 12 of your own customised wash programmes.

MobileControl
With MobileControl you can operate your washing machine remotely with the Miele@mobile App.

Washing assistant

The Washing assistant guides you step by step so that you can select the optimum wash programme for your laundry.

Maintenance
Maintenance options for the TwinDos system and the Clean machine programme are located in the Maintenance menu (see "Cleaning and care").

Settings
You can alter the washing machine's electronics to suit changing requirements in the Settings menu.

Operating the touch display

Scrolling
You can scroll to the right or the left by swiping your finger across the screen. The orange bar under the pictures shows that there are further options to choose from.

Selecting
Touch an option in the menu to select it. If there are multiple options, the selected option will be highlighted in orange.

Pull-down menu
Touch the top edge of the screen in the middle and drag down with your finger.

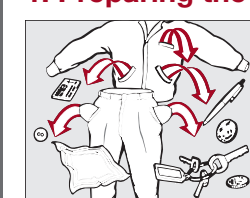
Touch display and sensor controls

The **Home** and Start/Stop sensors and the sensors in the display react to fingertip contact.

The Touch display can be scratched by pointed or sharp objects, e.g. pens. Only touch the display with your fingertips.

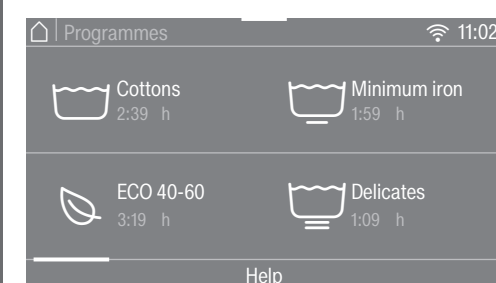
Preparing the laundry

1. Preparing the laundry

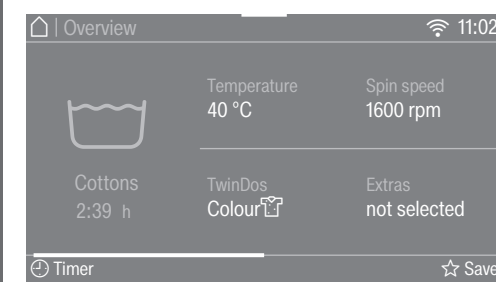


- Empty all pockets.
- ⚠ Foreign objects (e.g. nails, coins, paper clips, etc.) can cause damage to garments and components in the machine.
- Sort the laundry by colour and by care label. Most garments have a textile care label in the collar or side seam.
- Pre-treat stains and badly soiled areas (Please refer to the Miele website or Miele@mobile App for more information on stain removal.).

2. Selecting a programme



- Touch the Programme sensor.
- Scroll to the right of the display until the programme you want appears.
- Touch the sensor for that programme. The display will change to show the Overview menu. There are 3 different ways of selecting a programme.
 1. Favourites
 2. Washing assistant
 3. MobileControl



Selecting a programme

3. Selecting programme settings

- Selecting the temperature**
 - Touch the Temperature sensor and select the temperature you want.
- Selecting a spin speed**
 - Touch the Spin speed sensor and select the spin speed you want.

- Activating TwinDos**
TwinDos dispensing is automatically activated for all programmes in which dispensing is possible.
 1. **Switch TwinDos on or off**
 - Touch the TwinDos sensor and select Off or On.
 2. **Select the detergent**
When using Miele's 2-phase system you must set the colour of the laundry. If you are using a different type of detergent, this must be selected.
 3. **Select the degree of soiling.**
 - Select Light, Normal or Heavy and confirm your selection with the OK sensor.

- Selecting Extras**
 - Touch the Extras sensor.
 - Select one or more Extras and confirm your selection with the OK sensor.

Activating CapDosing

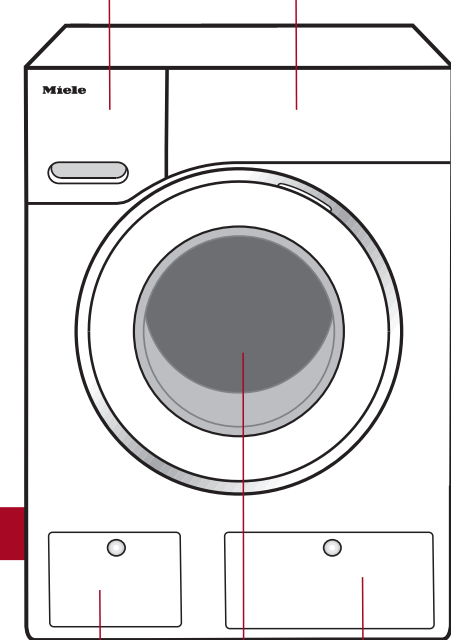
- Touch the CapDosing sensor.
- Select the type of capsule you want.

Stains

- Touch the Stains sensor.
- Select the type of stains in your load from the list and confirm your selection with the OK sensor.

Timer

You can use the Timer to set the finish time or the start time for a wash programme.



- 1 **Detergent dispenser drawer**
- 2 **Control panel**
- 3 **Access to drain filter, drain pump and emergency release**
- 4 **Door**
- 5 **Access panel for TwinDos containers**

PREPARING THE LAUNDRY/SELECTING A PROGRAMME

Starting the programme

6. Starting the programme

- Touch the flashing Start/Stop sensor. The door will lock and the programme will start. The programme status will appear in the display.

Adding laundry during a programme sequence

- Laundry can be added or removed at any time as long as the *Add laundry* sensor is lit up.
- Touch the *Add laundry* sensor. The following appears in the display:
Please wait
The programme will stop and the door will unlock.
 - The following appears in the display:
Add laundry
Door unlocked
 - Open the door and add or remove laundry.
 - Close the door.
 - Touch the Start/Stop sensor. The wash programme will continue.

- ☐ Detergent for the pre-wash
- ☐ Detergent for the main wash, including Soak if selected
- ☐ Fabric softener, liquid starch or capsules

CapDosing

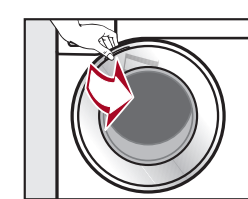
If you selected CapDosing when setting the programme, detergent will be dispensed via the capsule for this wash programme.

Using detergent tablets or pods

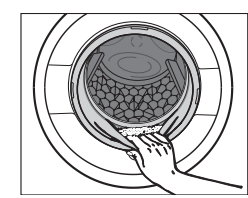
Always put detergent tablets or pods directly in the drum with the laundry. They cannot be added via the detergent dispenser drawer.

7. At the end of the programme

- The door is locked in the Anti-crease phase. Finish/Anti-crease and Unlock with "Start/Stop" appear in the display.
- Touch the Start/Stop sensor. The door will be unlocked.
- Note:** The door unlocks automatically at the end of the Anti-crease phase.



Items left in the drum could shrink or discolour other items in the next wash. Remove all items from the drum.



- Check the folds in the door seal for any small articles, e.g. buttons, which might be lodged there.
- Note:** For safety reasons close the door.
- Close the door and remove any used capsules from the detergent dispenser drawer.
- Tip:** Leave the detergent dispenser drawer slightly open to allow it to dry.

Extras

Extras

You can use the Extras sensor to augment the wash programmes.

Quick

The programme duration is reduced. Mechanical action and energy usage are increased.

Eco

The Eco Extra helps to save energy. The wash temperature is reduced and the wash duration is increased in return. The wash programme continues to provide excellent results.

Water plus

The water level in the wash and rinse stages is increased. You can select by how much the water level is increased (see "Settings - Water plus level").

Extra rinse

An additional rinse cycle can be carried out to give a better rinse result.

SingleWash

For efficiently washing a very small load (< 1 kg) in a normal wash programme. The wash duration is reduced. Please note the following advice:

- Use liquid detergent
- Reduce the dosage to a maximum of 50% of the amount quoted for a ½ load

Pre-ironing

In order to reduce creasing, the laundry undergoes a smoothing process at the end of the programme. Reducing the maximum load by 50% will give a better result. Follow the instructions in the display. Small loads give a better result. The garments must be suitable for drying in a tumble dryer ☐ ☐ and suitable for ironing ☐ ☐.

Rinse hold

The laundry is not spun after the final rinse and remains in the rinse water. This helps prevent creasing if the laundry is not going to be removed from the drum immediately after the end of the programme.

Soak

For heavily soiled and stained items with protein stains. A duration of between 30 minutes and 6 hours can be chosen for the soak process. See "Settings" for more information. The factory default setting is 30 minutes.

Intensive

For hard-wearing laundry that is very heavily soiled. Cleaning efficiency is increased through more intense mechanical action and the application of more heat energy.

AllergoWash

This option should be used where high standards of hygiene are required. More energy is used to lengthen temperature holding times and more water is used to increase rinsing efficiency. The items must be suitable for drying in a tumble dryer ☐ ☐ and suitable for ironing ☐ ☐.

Extra gentle

Drum rotation and wash duration are reduced. Lightly soiled fabrics are washed more gently.

Extra quiet

This option reduces noise levels during the wash programme. Use this if you want to wash during quiet periods (for instance, when children are sleeping). The final spin is automatically reduced to 1/2 (Rinse hold). The programme duration is increased.

Rinse hold

The laundry is not spun after the final rinse and remains in the rinse water. This helps prevent creasing if the laundry is not going to be removed from the drum immediately after the end of the programme.

ADDING LAUNDRY

fold here

fold here

fold here

fold here

fold here

fold here

Programme chart

Programme	Load (in kg)	Temperature	Items	Extras
Cottons	9.0	Cold to 90°C	Cottons, linens or cotton mix fabrics, e.g. table linen, towelling, underwear, T-shirts etc.	A B C D E F G H I J K L M
ECO 40-60	9.0		For moderately soiled cotton garments A laundry load consisting of mixed cottons that are intended for washing at 40°C or 60°C can be washed in the same wash cycle.	A B C D E F G H I J K L M
Minimum iron	4.0	Cold to 60°C	Synthetic, mixed fibre and easy care cotton.	A B C D E F G H I J K L M
Delicates	3.0	Cold to 60°C	Delicate garments made from synthetic fibre, mixed fibre, rayon and viscose.	A B C D E F G H I J K L M
QuickPowerWash	4.0	40°C - 60°C	Moderately soiled garments which are also suitable for washing in the Cottons programme.	A B C D E F G H I J K L M
Automatic plus	6.0	Cold to 40°C	Mixed loads of garments sorted according to colour which are suitable for the Cottons and Minimum iron programmes.	A B C D E F G H I J K L M
Woolens	2.0	Cold to 40°C	Machine-washable or hand-washable wool or wool blend fabric. If the care label does not specify a temperature, wash using the cold setting, silks and other hand-washable fabrics with no wool content, e.g. sahn, lace and silk.	E L M
Silks	1.0	Cold to 30°C		E L M
Express 20	3.5	Cold to 40°C	Cotton garments that have hardly been worn or are only very lightly soiled.	A F M
Shirts	1.0/2.0	Cold to 60°C	Shirts and blouses made of cotton and mixed fibre. If the preset Pre-ironing option is switched off, the maximum load capacity is increased to 2.0 kg.	A B C D E F G H I J K L M
Denim	3.0	Cold to 60°C	Items made of denim.	A B C D E F G H I J K L M
Dark garments	3.0	Cold to 60°C	Black and dark items made of cotton or mixed fibres.	A B C D E F G H I J K L M
Sportswear	3.0	Cold to 60°C	Sportswear such as jersey shirts and leggings, and microfibre and fleecy garments.	A B C D E G H I J K L M
Trainers	2 pairs	Cold to 40°C	Sport shoes only (not leather shoes).	C L M
Outerwear	2.5	Cold to 40°C	Performance outerwear (e.g. jackets and trousers) made from membrane fabric such as Gore-Tex®, SYMPATEX®, WINDSTOPPER® etc.	A B C D E F G H I J K L M
Proofing	2.5	40°C	Treating microfibre fabric, skiwear and table linen made from mainly synthetic fibres to provide a water and dirt resistant finish.	M
Down items	2.0	Cold to 60°C	Jackets, sleeping bags, pillows and other down-filled items.	A B C D G J K L M
Down duvets	2.5	Cold to 60°C	Quilts, duvets and pillows with feather or down filling.	A B C D G J K L M
Pillows	2.0	Cold to 60°C	Synthetic filled washable pillows.	A B C D G J K L M
Cottons hygiene	9.0	60°C to 90°C	Cotton or linen fabrics with direct skin contact or for which special hygiene requirements apply.	A B C D E F G H I J K L M
Curtains	2.0	Cold to 40°C	Curtains, including net curtains, specified as machine-washable by the manufacturer.	A B C D E F G H I J K L M
First wash	2.0	Cold to 40°C	New items made of cotton, towelling and polyester fabric.	C D E F G H I J K L M
Separate rinse	8.0	-	For rinsing items washed by hand.	C M
Starch	8.0	-	Starching table cloths, serviettes and workwear.	C M
Drain/Spin	8.0	-	Drain only: Select 0 rpm for the spin speed.	
Clean machine	No load	85°C	With frequent washing at low temperatures there is a danger of a build-up of bacteria in the washing machine. Cleaning the washing machine will significantly reduce bacteria, mould, and biofilm, and prevent the build-up of unpleasant odours.	
Cottons	9.0	40°C	Normally soiled cotton garments. These settings are the most efficient in terms of energy and water consumption for washing cottons.	A B C D E F G H I J K L M

A = Quick; B = Eco; C = Water plus; D = Extra rinse; E = SingleWash; F = Pre-wash; G = Soak; H = Intensive; J = AllergoWash; K = Extra gentle; L = Extra quiet; M = Rinse hold

PROGRAMME CHART

Detergent

Miele recommended detergents

Programmes	Miele		Miele capsules	
	UltraPhase 1 and 2			
Cottons	✓	-	✓	✓
ECO 40-60	✓	-	✓	✓
Minimum iron	✓	-	✓	✓
Delicates	✓	✓	✓	-
QuickPowerWash	✓	-	-	-
Automatic plus	✓	-	✓	✓
Woolens	-	✓	-	-
Silks	-	✓	-	-
Express 20	✓	-	-	-
Shirts	✓	-	✓	✓
Denim	✓	-	✓	-
Dark garments	✓	-	✓	-
Sportswear	✓	✓	-	-
Trainers	✓	-	-	✓
Outerwear	-	✓	-	-
Down items	-	✓	-	-
Down duvets	-	✓	-	-
Pillows	✓	-	-	-
Cottons hygiene	✓	-	✓	✓
Curtains	✓	-	-	✓
First wash	✓	-	✓	-
Separate rinse	-	-	✓	-
Cottons	✓	-	✓	✓

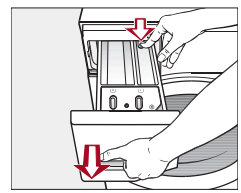
- ✓ Recommended
- Not recommended
- Specialist detergents (e.g. WoolCare)
- Fabric care (e.g. fabric softener)
- Additive (e.g. booster)

Cleaning and care

Cleaning the detergent dispenser drawer

Washing at low temperatures and the use of liquid detergent can lead to a build-up of mould and bacteria in the detergent dispenser drawer.

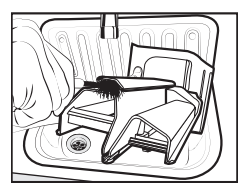
- For hygiene reasons, clean the entire drawer at regular intervals.
- Pull out the detergent dispenser drawer until a resistance is felt.



- Press down the release button and, at the same time, pull the drawer right out of the machine.
- Clean the detergent drawer with warm water.

Cleaning the siphon tube and the fabric softener channel

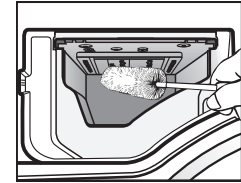
- Pull the siphon out of the compartment and clean it under warm running water.
- Clean the siphon tube in the same way.
- Refit the siphon.
- Clean the fabric softener channel using a brush and warm water.



⚠ Liquid starch can cause the siphon to become clogged. Make sure that you clean the siphon and siphon tube particularly thoroughly after using liquid starch a few times.

Cleaning the detergent dispenser drawer housing

- Use a bottle brush to remove detergent residues and limescale from the jets inside the detergent dispenser drawer housing.



Cleaning the drum (Hygiene info)

Washing at low temperatures and/or using liquid detergents can cause bacteria and odours to build up in the washing machine. Use the Clean machine programme to clean the machine. Note the message in the display:

Hygiene info: Select "Maintenance" and start the "Clean machine" programme

Cleaning the TwinDos system

⚠ Damage resulting from dried washing detergent. If the system has not been used for a long time (more than two months), the detergent in the hoses can become viscous or dry out. The hoses can become blocked and would then need to be cleaned by a service technician. Clean the TwinDos system.

To clean the system, a refillable TwinDos container is required (sold separately), available online at shop.miele.com.

Problem solving guide

Some of the messages in the display are more than one line long. Touch the V or ^ sensor to read them in full.

Message	Possible cause and remedy
The display remains dark and the Start/Stop sensor indicator light does not come on.	<ul style="list-style-type: none"> There is no power to the machine. Check whether the mains plug is plugged in and switched on. Check whether the circuit breaker has tripped. The washing machine has switched off automatically to save energy. Switch it back on with the ⏻ button. The door is not closed properly. The door lock could not engage. Close the door again. Start the programme again. If the fault message appears again, contact Miele.
Door will not lock. Call Miele.	<ul style="list-style-type: none"> The door is not closed properly. The door lock could not engage. Close the door again. Start the programme again. If the fault message appears again, contact Miele.
Water drainage fault. Clean the drain filter and the pump. Check the drain hose.	<ul style="list-style-type: none"> The water outlet is blocked or restricted. The drain hose has been fixed too high. Clean the drain filter and the drain pump. Check whether the maximum delivery head of 1 m has been exceeded.
Water intake fault. Turn on the tap.	<ul style="list-style-type: none"> The water inlet is blocked or restricted. Check whether the tap is turned on properly. Check whether the inlet hose is kinked. Check whether there is sufficient water pressure.
Waterproof system activated. Turn off the tap. Call Miele.	<ul style="list-style-type: none"> The filter in the water inlet is blocked. Clean the filter (see the operating instructions). Turn off the tap. Call Miele.
Fault F. If restart fails, call Miele.	<ul style="list-style-type: none"> There is a fault. Disconnect the washing machine from the mains electricity supply, either by switching it off at the wall socket and withdrawing the plug, or by disconnecting it at the circuit breaker. Wait at least 2 minutes before reconnecting the washing machine to the mains electricity supply. Then switch the washing machine on again. Restart the programme. If the fault message appears again, contact Miele. Call Miele.
The door lock is jammed. Call Miele.	<ul style="list-style-type: none"> The door lock is jammed. Call Miele.

Message	Possible cause and remedy
Check detergent	<ul style="list-style-type: none"> Excessive foam has built up during washing. Check the amount of detergent dispensed. With automatic detergent dispensing, check the dosage amount set. Observe the instructions on the detergent packaging and the degree of soiling of the laundry. If necessary, reduce the dosage amount by increments of 10%.
Hygiene info: Select "Maintenance" and start the "Clean machine" programme.	<ul style="list-style-type: none"> A programme using a temperature above 60°C has not been run for a long time. In order to prevent bacteria and unpleasant odours building up in the machine, run the Clean machine programme using Miele IntenseClean or powder detergent.
Align the washing machine. Laundry not properly spun.	<ul style="list-style-type: none"> The Pre-ironing Extra which runs at the end of the programme could not be carried out properly. Check whether the washing machine is aligned correctly as described in "Installation and connection - Levelling the machine". Check whether the maximum delivery head of 1 m has been exceeded. If the fault message appears again, contact Miele. The washing machine can still be used, however without the Pre-ironing Extra.
Only a few more washes possible before a new cartridge is needed for compartment 1.	<ul style="list-style-type: none"> The detergent in the cartridge is running low. There are between 4 and 8 wash cycles remaining. Order a new cartridge.
Use "TwinDos" or carry out "TwinDos" Maintenance in the "Maintenance" menu. See the operating instruction manual for more information.	<ul style="list-style-type: none"> TwinDos or automatic dispensing via compartment 1 and/or 2 has not been used for a long time. Use TwinDos for one of your next loads. Carry out the TwinDos maintenance programme as described in "Cleaning and care - TwinDos maintenance".
"TwinDos" Maintenance for compartment 1 must be started in the "Maintenance" menu. See the operating instruction manual for more information.	<ul style="list-style-type: none"> TwinDos or automatic dispensing via compartment 1 and/or 2 has not been used for a long time. It is possible that detergent has dried inside the hoses. Carry out the TwinDos maintenance programme immediately as described in "Cleaning and care - TwinDos maintenance".

The messages will appear at the end of the programme and when the washing machine is switched on and need to be confirmed with the OK sensor.

Miele

Quick Start Guide Washing machine



These short instructions are not a substitute for the operating instructions supplied with the appliance. Please read the operating instructions supplied with your washing machine before using it for the first time and take note of the Warning and Safety instructions, as well as the full descriptions on how to use your appliance.