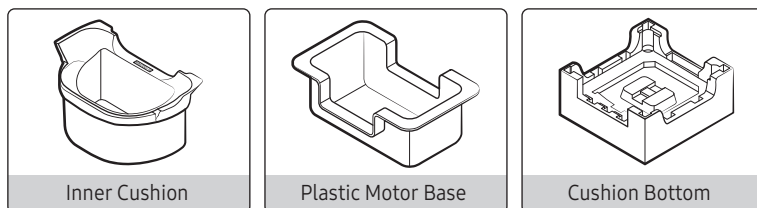


Installing a Washing Machine

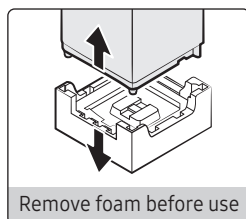
DC68-20151X-06



Remove all the packing materials prior to use

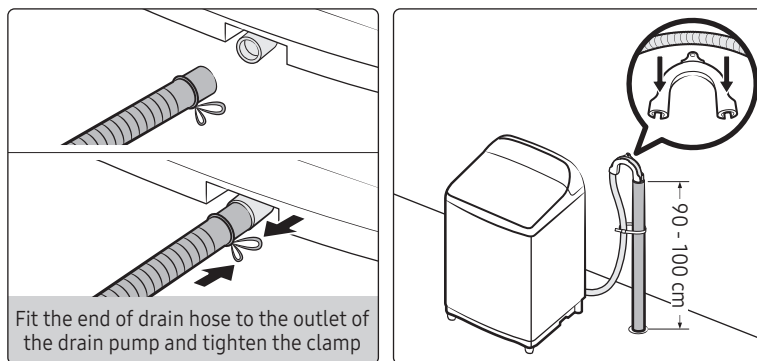


⚠ Caution



Use the machine without removing the foam bottom or the motor base (some models) causes the machine to malfunction and damage the internal components.

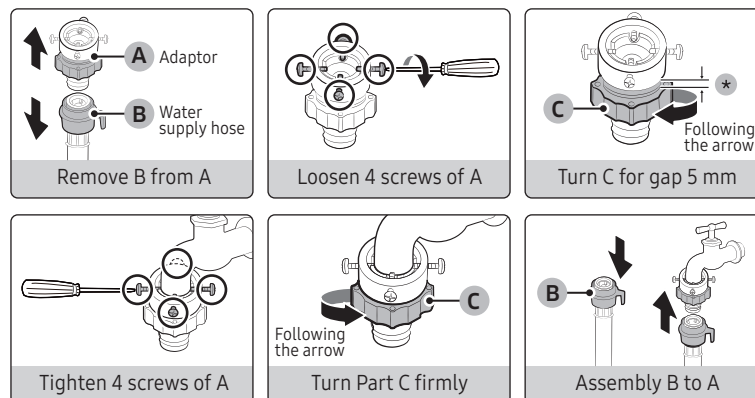
Drain Hose Connection



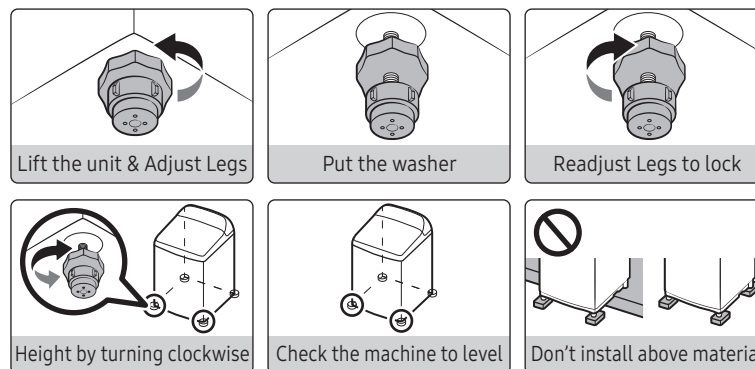
⚠ Caution

- Make sure the end of the drain hose is not submerged by water. Otherwise, the washing machine may suffer serious damage.
- Connect the other end of the drain hose to a standpipe or basin that is positioned 90 - 100 cm from the floor.

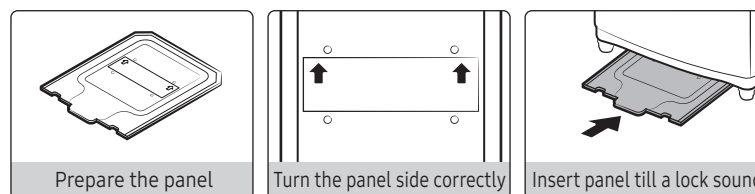
Water Supply Hose Connection



Leveling the Unit & Adjusting for Vibration



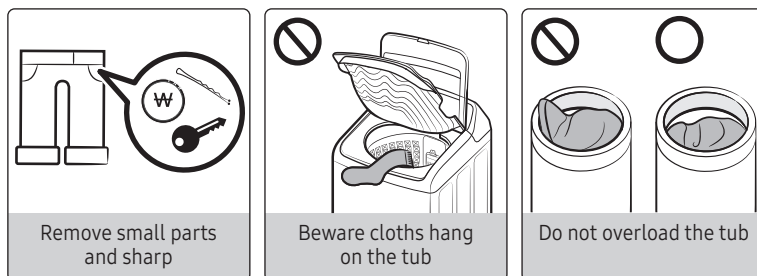
Anti-rat panel (applicable models only)



Operation and maintenance

SAMSUNG

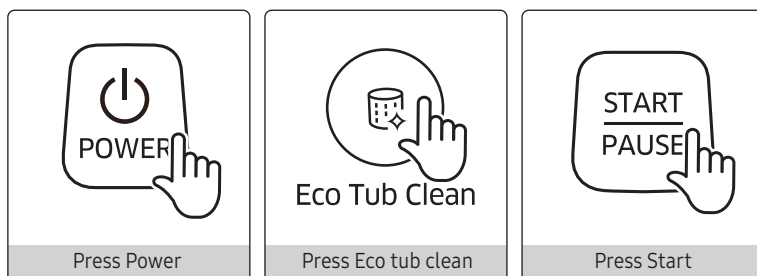
Caring for clothes before washing



Caution

- Metal objects such as coins, pins, and buckles on clothing may damage other laundry items as well as the tub.
- Don't overload the tub. Make sure no part of the laundry is exposed outside of the tub.
- Take a piece of cloth in the tub. To protect socks & small pieces of cloth fall into the drum space.
- To wash at large for example, a blanket may temporarily stop working between the dry button & fill the water to increase the balance.

Cleaning the basket spin



Caution

- Eco Tub Clean must be used only when empty. If there is a fabric can damage the fabric or problems with the machine.
- When the Eco Tub Clean signal is displayed, a wash program is required. If you do not use the wash program, the alarm is still displayed for 5 cycles when to use the Eco tub clean immediately. The alarm goes away.

Cleaning the Mesh Filter



Cleaning the mesh filter helps to improve the filtering efficiency of the water valve. (When cleaning, it should be assembled)

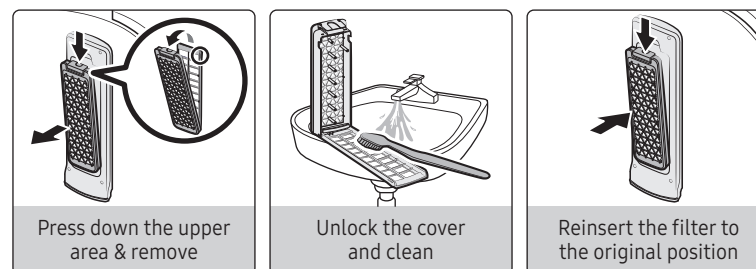
- Should be cleaned 3 times / month.
- Don't operate without mesh filter.

Cleaning the Pump Filter



Keep clean the filter at least 1 time / month to avoid draining system problem.

Cleaning the Filter (applicable models only)



Regular cleaning of the filter will help to filter the debris better.

- Should be cleaned every week.