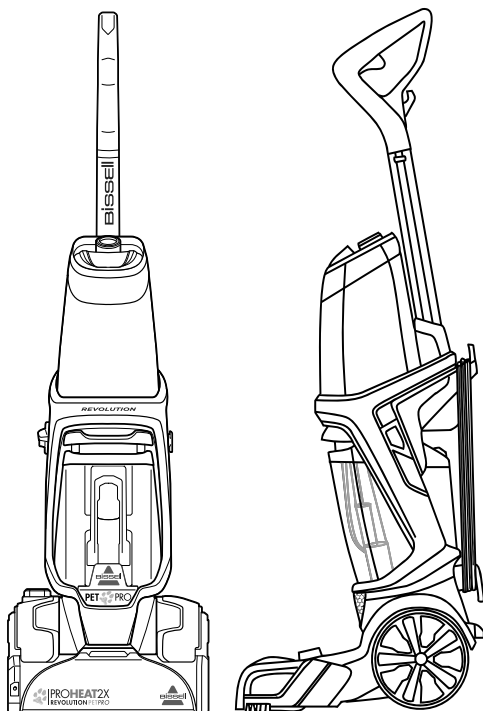


PROHEAT 2X REVOLUTION PET

Carpet & Upholstery Deep Cleaner

USER GUIDE
2066F



IMPORTANT SAFETY INSTRUCTIONS

READ ALL INSTRUCTIONS BEFORE USING YOUR APPLIANCE.

Unplug from outlet when not in use and before conducting maintenance. When using an electrical appliance, basic precautions should be observed, including the following:

WARNING

TO REDUCE THE RISK OF FIRE, ELECTRIC SHOCK, OR INJURY:

- » This appliance can be used by children aged from 8 years and above and persons with reduced physical, sensory or mental capabilities or lack of experience and knowledge if they have been given supervision or instruction concerning use of the appliance in a safe way and understand the hazards involved. Cleaning and user maintenance shall not be made by children without supervision.
- » Children should be supervised to ensure that they do not play with the appliance.
- » Keep hair, loose clothing, fingers, and all parts of body away from openings and moving parts of the appliance and its accessories.
- » Unplug from electrical socket when not in use, before cleaning, maintaining or servicing the appliance, and if your appliance has an accessory tool with a moving brush, before connecting or disconnecting the tool.
- » If the supply cable is damaged, it must be replaced by the manufacturer, its service agent, or similarly qualified person in order to avoid a hazard.
- » Do not run appliance over cable.
- » Do not leave appliance when plugged in.
- » Do not use with damaged cable or plug.
- » Do not pull or carry by cable, use cable as a handle, close door on cable, or pull cable around sharp edges or corners.
- » Keep cable away from heated surfaces.
- » To unplug, grasp the plug, not the cable.
- » Do not handle plug or appliance with wet hands.
- » Turn off all controls before unplugging.
- » Hold plug when rewinding onto cord reel. Do not allow plug to whip when rewinding.
- » Plastic film can be dangerous. To avoid danger of suffocation, keep away from children.
- » Use only as described in this user guide.
- » Use only manufacturer's recommended attachments.
- » Do not immerse in water or liquid. Use only on surfaces moistened by the cleaning process.
- » Use only BISSELL cleaning products intended for use with this machine.
- » Always install float before any wet pick-up operation.
- » If appliance is not working as it should, has been dropped, damaged, left outdoors, or dropped into water; do not attempt to operate it and have it repaired at an authorized service center.
- » Do not put any object into openings.
- » Do not use with any opening blocked; keep free of dust, lint, hair, and anything that may reduce air flow.
- » Use extra care when cleaning on stairs.
- » Do not use to pick up flammable or combustible liquids, such as petroleum, or use in areas where they may be present.
- » Do not pick up toxic material (chlorine bleach, ammonia, drain cleaner, etc.)
- » Do not use appliance in an enclosed space filled with vapours given off by oil base paint, paint thinner, some mothproofing substances, flammable dust, or other explosive or toxic vapours.
- » Do not pick up hard or sharp objects such as glass, nails, screws, coins, etc.
- » Keep appliance on a level surface.
- » Do not pick up anything that is burning or smoking, such as cigarettes, matches, or hot ashes.
- » If your appliance has a motorized brushroll, do not leave machine running in the same spot without the handle fully upright.
- » Always connect to a properly earthed electrical socket. Do not modify earthed plug.
- » Liquid must not be directed towards equipment containing electrical components.
- » Do not immerse. Use only on surfaces moistened by the cleaning process. Use only BISSELL cleaning products intended for use with this machine.
- » Use only the type and amount of liquids specified under the operations section of this guide.
- » Do not expose to rain. Store indoors.

SAVE THESE INSTRUCTIONS

FOR OPERATION ON A 220-240 VOLT A.C. 50-60 HZ POWER SUPPLY ONLY.

This model is for household use only.

IMPORTANT

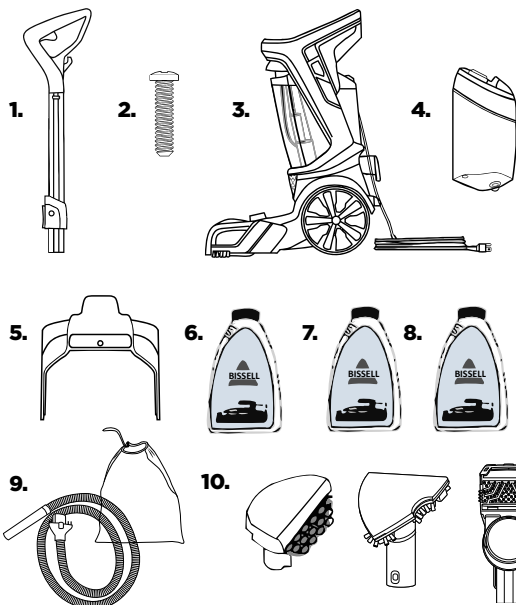
- *Tipping the machine when using the hose and tool may cause carpet damage.*
- *Use cord clip to help prevent damage from the appliance running over the cord.*

Thanks for buying a BISSELL deep cleaner!

We love to clean and we're excited to share one of our innovative products with you. We want to make sure your deep cleaner works as well as it does today for years to come, so this guide has tips on using (pages 7-13), maintaining (pages 13-17), and if there is a problem, troubleshooting (page 18).

In just a few simple assembly steps, you'll be ready to deep clean. Flip to page 5 and let's get started!

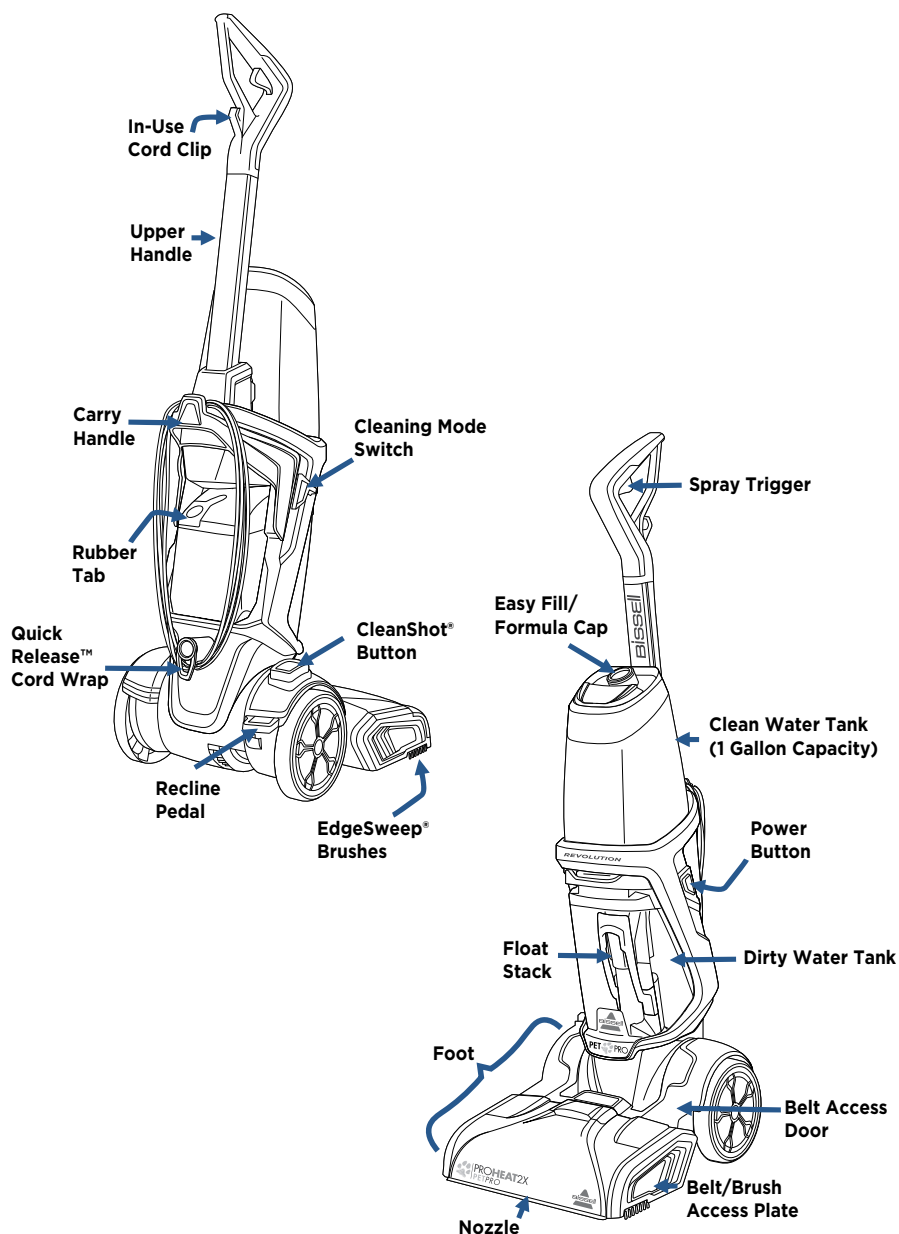
What's In The Box?



- 1. Upper Handle
- 2. (1) Screw taped to Upper Handle
- 3. Base with Dirty Water Tank
- 4. Clean Water Tank
- 5. Carry Handle
- 6. BISSELL 2X Professional Formula
- 7. BISSELL Antibacterial Formula
- 8. BISSELL Oxy Boost Formula
- 9. Accessory bag & hose
- 10. (3) Specialized Tools
- 11. Nozzle Clean Out Tool

Safety Instructions.....	2	Maintenance & Care	13-17
Product View.....	4	Troubleshooting	18
Assembly	5	Guarantee.....	20
Cleaning Formulas.....	6	Service.....	20
Operations	7-13		

Getting to Know Your Deep Cleaner



Assembly

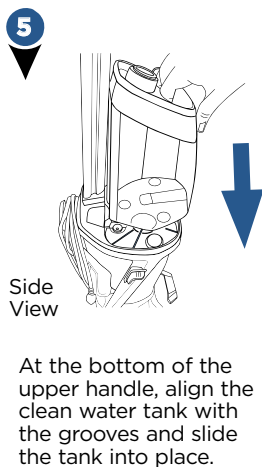
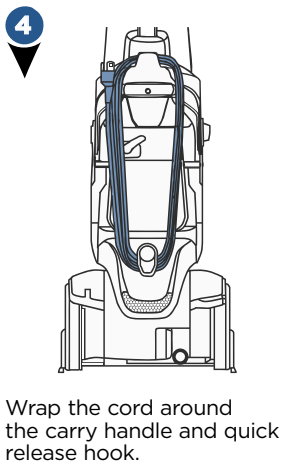
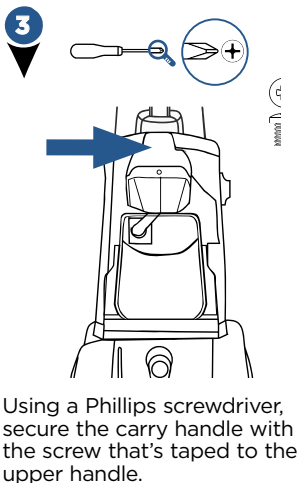
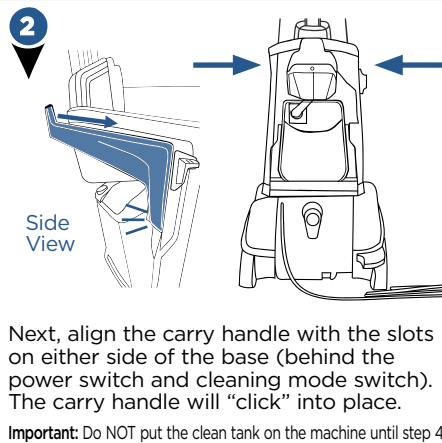
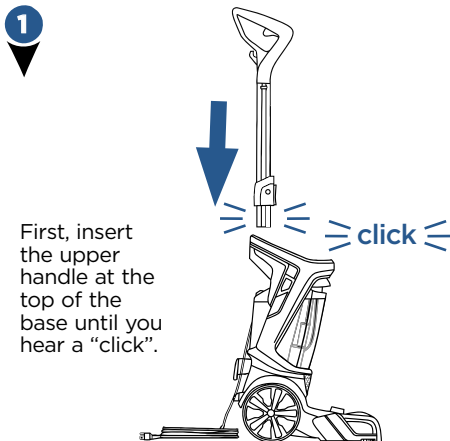
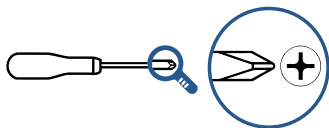
WARNING

Do not plug in your deep cleaner until you are familiar with all instructions and operating procedures.

Your deep cleaner comes in four easy-to-assemble components and an accessory bag.

- Base
- Upper Handle
- Clean Water Tank
- Carry Handle

In step 3, you will need to use a Phillips screwdriver.



Cleaning Formulas

⚠ WARNING

To reduce the risk of fire and electric shock due to internal component damage, use only BISSELL cleaning fluids intended for use with the deep cleaner.

- Keep plenty of genuine BISSELL formula on hand so you can clean whenever it fits your schedule.
- Always use genuine BISSELL deep cleaning formulas. Non-BISSELL cleaning formulas may harm the machine and may void the guarantee.
- Before use on carpet or upholstery, test the machine and formula on a small hidden area for colourfastness. If colour is affected, do not use.

PRETREAT PRE TREAT SPOTS AND STAINS TO IMPROVE CARPET CLEANING PERFORMANCE



Stain PreTreat

Pretreat to penetrate and loosen tough stains



Pet Stain PreTreat

Pretreat to help remove tough pet stains and odours

BOOST CARPET CLEANING FORMULA ENHANCER



Oxy Boost

Removes old, set-in stains permanently

easy fill
SYSTEM

2X* CONCENTRATED CLEANING FORMULAS

WASH & REMOVE	WASH & PROTECT			WASH & REFRESH		WASH & SHINE
+ Antibacterial	Professional Stain & Odour	Pet Stain & Odour	Stain & Odour	Ambi Pur™ Blossom & Breeze	Natural Orange	Hard Floor Cleaner
Cleans and kills odour causing bacteria	Professional strength to remove extra tough stains and odours <i>Includes Scotchgard™ Protector</i>	Removes tough pet stains and contains patented odour removal technology <i>Includes Scotchgard™ Protector</i>	Removes tough stains and odours <i>Includes Scotchgard™ Protector</i>	Powerful cleaning with a refreshing spring scent	Powerful cleaning with a refreshing natural orange scent	Removes tough dirt and grime, leaves a natural shine

ONLY BISSELL Wash & Protect formulas protect from future stains with Scotchgard™ Protector. Scotchgard™ is a trademark of 3M®.

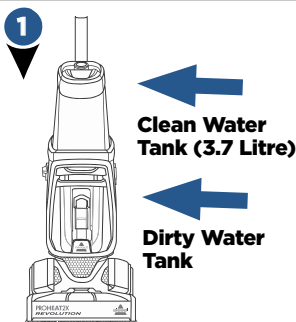
*60 mL of 2X concentrated formula is equivalent to 120 mL of non-concentrated formula.

Tips Before Carpet Cleaning

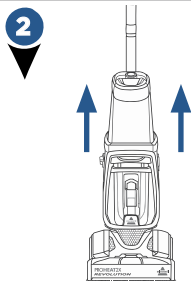
- If cleaning an entire room, consider moving your furniture to another area.
- Remove loose dirt and impediments.
- Pre-treat stains with BISSELL PreTreat to improve performance on tough stains and ground-in dirt.

Filling Your Clean Water Tank:

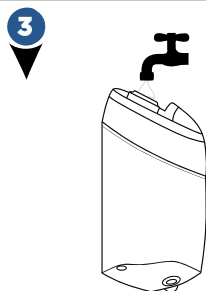
Wash & Remove + Antibacterial Formula



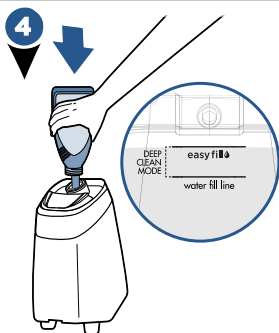
The clean water tank is at the top of the machine.



Lift the clean water tank straight up to remove from the machine.

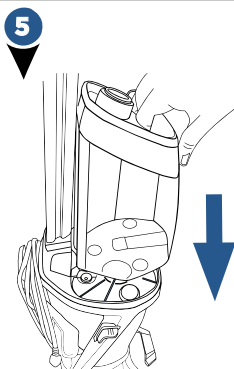


Unscrew the cap from the clean water tank. Add warm tap water to the water fill line. Twist cap back into place.



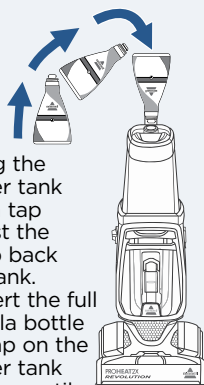
With Trial Size Antibacterial Formula:

Pour into the clean tank up to the EasyFill line. Twist cap back on to tank.



At the bottom of the upper handle, align the clean water tank with the grooves and slide the tank into place.

For Future Use with Full Size Antibacterial Formula:



After filling the clean water tank with warm tap water, twist the yellow cap back onto the tank. Firmly insert the full size formula bottle into the cap on the clean water tank and squeeze until formula reaches the EasyFill line.

A few notes about filling the clean water tank:

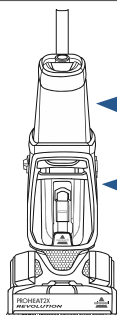
- Fill with warm (140°F/60°C MAX) tap water and add the appropriate BISSELL solution. **DO NOT USE BOILING WATER. DO NOT HEAT WATER OR TANK IN MICROWAVE.**
- When using BISSELL Wash & Remove + Antibacterial formula: Only fill your clean water tank with the recommended amount of water and formula to achieve anti-bacterial benefits.

NOTICE: Do not over wet carpet. Be careful not to run over loose objects or edges of area rugs. Stalling the brush may result in premature belt failure.

Filling Your Clean Water Tank:

2X Concentrated Formula

1

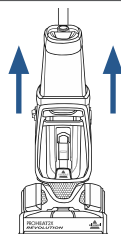


Clean Water Tank
(3.7 Litre)

Dirty Water Tank

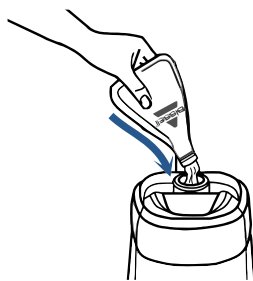
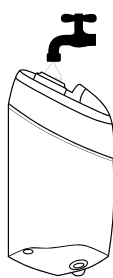
The clean water tank is at the top of the machine.

2



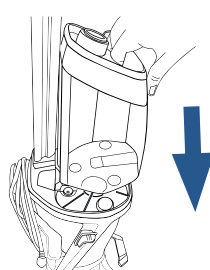
Lift the clean water tank straight up to remove from the machine.

3



Unscrew the cap from the clean water tank. Add warm tap water to the water fill line. Next, reference the chart below for formula amounts to add to the tank. Twist cap back into place.

4



At the bottom of the upper handle, align the clean water tank with the grooves and slide the tank into place.

FORMULA FILLING INSTRUCTIONS

BISSELL 2X Concentrated Formulas

DEEP CLEAN MODE

Fill water to the Water Fill Line, then add 74 mL of formula.

EXPRESS CLEAN MODE

Fill water to the Water Fill Line, then add 37 mL of formula.

NOTE: Fill with warm (140°F/60°C MAX) tap water and add the appropriate BISSELL solution. **DO NOT USE BOILING WATER. DO NOT HEAT WATER OR TANK IN MICROWAVE.** Do not substitute BISSELL 2X Formula cleaning solution with other household cleaning products.



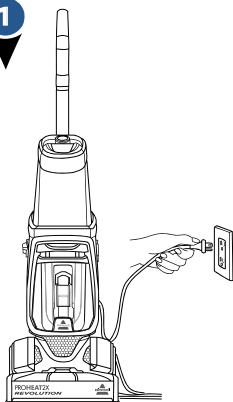
Pour in more power with BISSELL Oxy Boost

- Fill tank with water and 2X formula (Step 3 above).
- Add 60 mL of BISSELL Oxy Boost per 3.7 L of water.
- The ProHeat 2X Revolution Pet has a 3.7 L clean water tank.

NOTICE: Do not over wet carpet. Be careful not to run over loose objects or edges of area rugs. Stalling the brush may result in premature belt failure.

Cleaning Your Carpet

1



Plug into a properly earthed outlet.

2

Select cleaning mode:

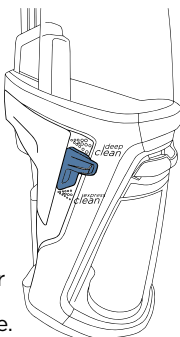
Deep Clean

Delivers a deep clean to your carpet.

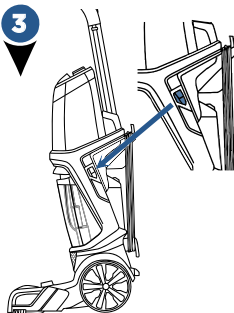
Express Clean

Provides a lighter clean with about 1 hour of dry time.

*Choose "Deep Clean" mode and use BISSELL Wash & Remove + Antibacterial to deliver antibacterial benefits.

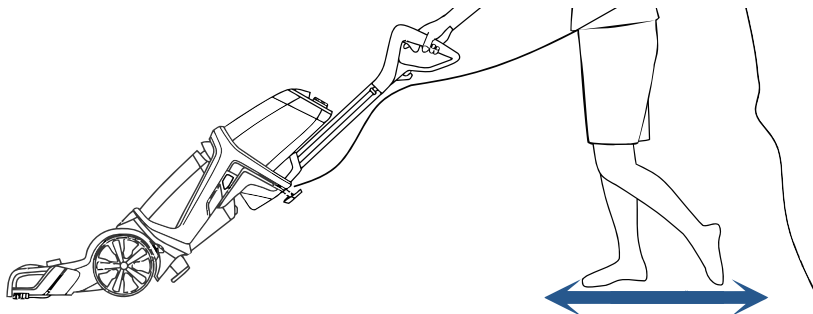


3



Press the power button to turn the machine on. To recline your machine for use, press the recline pedal with your foot.

4



Deep Clean Mode:

1. Press the spray trigger to apply solution while making **2 slow wet passes** - 1 forward and 1 back.
2. Release the trigger.
3. Make **2 slow dry passes** - 1 forward and 1 back, to suck up the dirty solution. **(Do not hold down the trigger for this step.)**

NOTE: For best cleaning performance, clean with your machine in Deep Clean Mode.

Deep Clean Mode:

When using BISSELL Wash & Remove + Antibacterial Formula

1. Press the spray trigger to apply solution while making **3 slow wet passes** - 1 forward, 1 back, and 1 forward again.
2. Release the trigger.
3. Make **1 slow dry pass** back, to suck up the dirty solution. **(Do not hold down the trigger for this step.)**

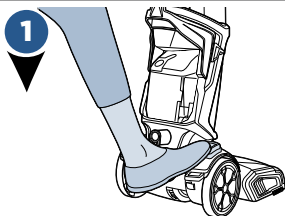
Express Clean Mode:

1. Press the spray trigger to apply solution while making **2 wet passes** - 1 forward and 1 back.
2. Release the trigger.
3. Make **2 dry passes** - 1 forward, 1 back to suck up the dirty solution. **(Do not hold down the trigger for this step.)**

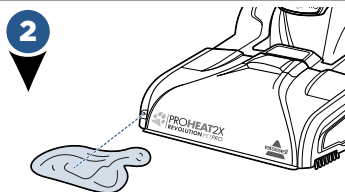
NOTE: In Express Clean Mode, the dirty tank will not get as full as when cleaning with Deep Clean Mode.

NOTICE: To prevent damage to Berber carpets, avoid repeated strokes in the same area.

Cleaning with CleanShot®



Press the CleanShot® button with your foot. The window of the button will be green and show an “I” symbol when it is on.



Spray will continue until you turn it off. To turn CleanShot® off, press the button with your foot. The window of the button will be red and show an “O” symbol when it is off.

Completely cover the stain with CleanShot® spray. Allow the stain to soak. To extract, manoeuvre the foot of the machine over the stain to brush and remove.

Helpful Cleaning Tips

- » Clean on a day with low humidity to help carpets dry faster.

While Cleaning

- » Turn on any available ceiling fans and make sure the room is well ventilated to help the airstream in your home.
- » Additional dry strokes will aid in faster drying of carpet. The two exceptions are when using Express Clean Mode or when using DeepClean + Antibacterial formula. With these exceptions, the directions need to be followed exactly.

After Cleaning

- » Use a portable fan directed towards the surface of the carpet and/or a dehumidifier to aid in drying carpet.
- » Adjust your heat up a few degrees in the winter and use your air conditioning for dryer air in the summer.
- » On warm dry days, simply opening the windows can be an eco-friendly option to assist in drying carpet.
- » When the carpet feels dry to the touch, return furniture that was removed. To be sure to avoid staining, place wax paper or aluminum foil under the legs. Wait at least another three hours before removing wax paper or foil.

Cleaning Area Rugs

Important! Please check manufacturer's tag before cleaning area rugs for any specialised cleaning instructions. Not for use on silk or delicate area rugs.

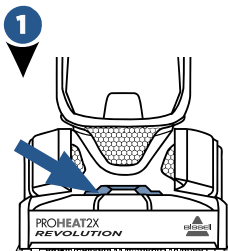
1 Select Express Clean Mode.

2 Test in a small inconspicuous area first for colourfastness.

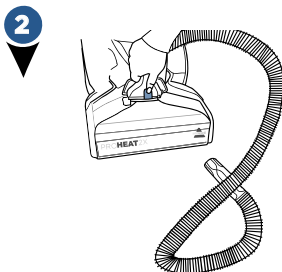
3 Important: Keep the foot of the deep cleaner perpendicular to the rug's edge with each cleaning pass to prevent damage.

Cleaning with Hose and Tools

***Ensure the machine is upright while using the hose and tool.
(The rotating brush rolls under the foot will continue to turn while the hose and tool are in use, but they will lift off the ground.)**

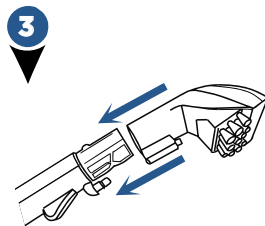


Turn the machine off and unplug from the earthed outlet. Lift accessory hose door on top of foot on the front of the machine. The door flips toward the machine to open.

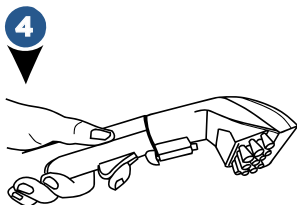


Insert the hose and snap into place. Be sure the coloured hose release clip is facing out, away from machine.

Important: Prime the hose by holding at ground level and pressing the spray trigger until solution starts to dispense out of the spray tip. Then, release the spray trigger and proceed to step 3.



Attach the tool to the end of the hose. (Tools may vary by model.) Plug into a properly earthed outlet and press the power button to turn machine on.



Press the spray trigger button to spray the soiled area, then slowly move tool back and forth over the area.

Release the spray trigger to suck up the dirty solution. Work in small sections until the area is clean.

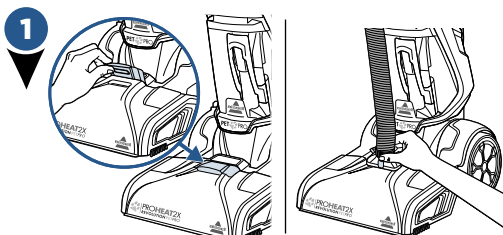
When finished cleaning, suction up warm clean water from a tap or bowl to rinse the inside of the hose and tool. Detach the hose and tool and close the accessory hose door. Let the hose and tool air dry before storing.

NOTE: Regularly clean high-traffic area rugs in Express Clean mode to remove the forgotten dirt.

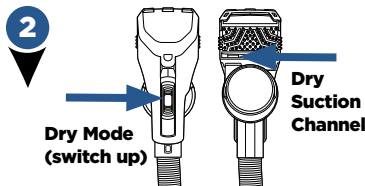
NOTICE: Tipping the machine when using the hose and tool may cause carpet damage.

NEW! 2-in-1 Pet Upholstery Tool

***Make sure your clean tank has water & formula to use the tool in wet mode.**



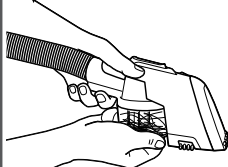
Follow hose plug-in instructions from steps 1 & 2 on page 14.



Attach the tool and select dry mode to first pick up dry debris and pet hair from carpet and upholstery. The suction will be at the lower part of the tool, near the dry cup.

DRY MODE NOTE: Use a “raking” motion to clean carpets and upholstery. Start with the tool farthest away and rake in small increments as you bring the tool toward you. The rubber nubs will help attract hair to the suction channel.

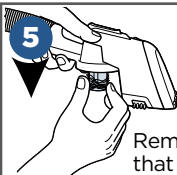
3 Empty the cup when it fills with hair and debris.



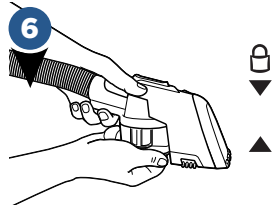
Turn off the machine. Hold the cup and twist counterclockwise line up the arrow with the unlock symbol and remove.



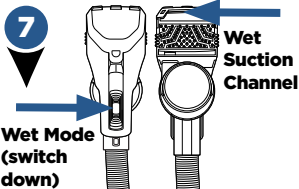
Take off the cup to empty hair and debris.



Remove hair that may wrap around the filter.



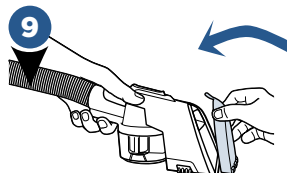
To reattach the cup, line up the cup to the tool indents, and rotate clockwise. The arrow will line up with the locked icon when secured.



To Deep Clean carpet and upholstery, move the switch to wet mode. Press the trigger to spray water and formula; use the top of the nozzle to extract stains and odours.



To remove hair or trapped debris from the nozzle, first turn off the machine. Pull the nozzle tab away from the tool to remove and rinse under running water.



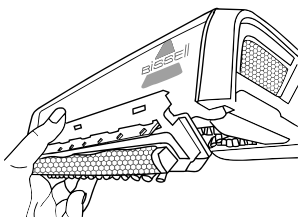
To replace, line up the nozzle edge and snap into place. Before storing, make sure all hair is removed from the dry cup and nozzle has been rinsed and dried.

WET MODE NOTE: Start from the area farthest away. Hold the trigger down, and pull the tool toward you. Keep the tool in contact with the surface as you pull. You will see extraction through the nozzle.

Cleaning with the Bare Floor Tool

(select models only)

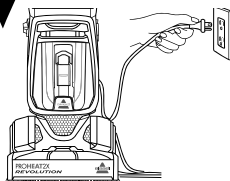
1



Turn off and unplug your machine. Attach the bare floor tool to the foot's bottom by lining the tool to the edge of the nozzle. Rotate down until it clicks into place.

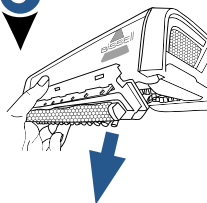
Follow filling instructions on page 8 using the Wash & Shine Hard Floor formula and switch cleaning mode to Express Clean.

2



Plug into a properly earthed outlet and turn the machine on. Clean by pressing the spray trigger for 1 wet pass forward, 1 wet pass back, and then release the spray trigger and make 1 dry pass forward, 1 dry pass back.

3



When finished, unplug the machine and remove the bare floor tool by rotating the tool up to unhook from the nozzle. Rinse and let dry before storing.

WARNING

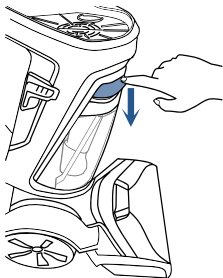
WARNING: To reduce the risk of fire and electric shock when cleaning a hard floor, the BISSELL Bare Floor Tool must be used, and is only to be used with BISSELL Wash & Shine Hard Floor formula intended for use with this appliance.

Empty Dirty Water Tank

WARNING

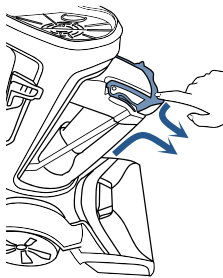
To reduce the risk of fire, electric shock or injury, turn power OFF and disconnect plug from electrical outlet before performing maintenance or troubleshooting.

1



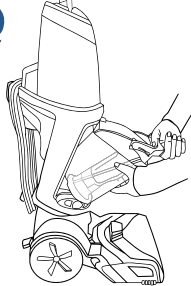
To remove dirty water tank, press down on the coloured tank handle.

2



Tilt the tank slightly toward you. Grab the handle and tank with both hands.

3



Pull dirty water tank up and away to remove. (continue to step 4)

Empty Dirty Water Tank (continued)

4



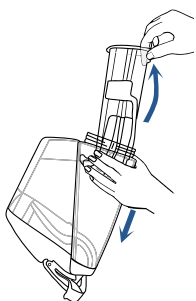
Quick Empty:

Pull the rubber tab (located at the corner of the top of the tank) and tilt to pour. When closing the rubber tab, make sure all edges are sealed tight.

Final Rinse & Clean:

Unscrew ring at bottom of tank by turning counterclockwise. Gently remove the float stack, rinse and clean.

Once clean, return float stack into the tank by lining up the arrows to point at each other. With the arrows aligned, the float stack will lock into place. Return the ring and twist clockwise to lock. Water may leak if the ring is not fully tightened.

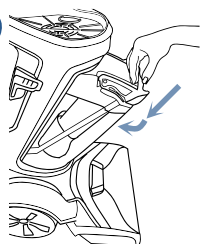


5



Clean the red filter below the dirty tank by wiping off any remaining dirt or debris.

6

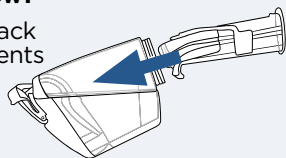


Return Dirty Tank:

Angle the tank and insert bottom first. Then tilt the tank toward the machine and push the top in until it clicks into place.

Did You Know?

The Float Stack is what prevents your dirty tank from overflowing.

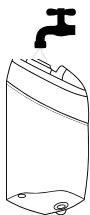


Cleaning Machine After Use

⚠ WARNING

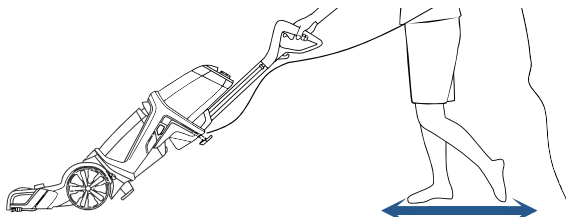
To reduce the risk of electric shock, turn power switch off and disconnect plug from electrical outlet before performing maintenance or troubleshooting checks.

1



First, fill the clean water tank with warm tap water and then empty it all to rinse. Then fill again with warm tap water and return the tank to the machine.

Twist cap back on tightly.



To flush and rinse machine:

Turn the machine on and press the spray trigger for 15 seconds while making back and forth passes on a section of carpet. Release the spray trigger and suck up the water.

See pages 11-12 to clean the water that was just sucked up from the dirty tank.

Empty the clean water tank and let dry before storing.

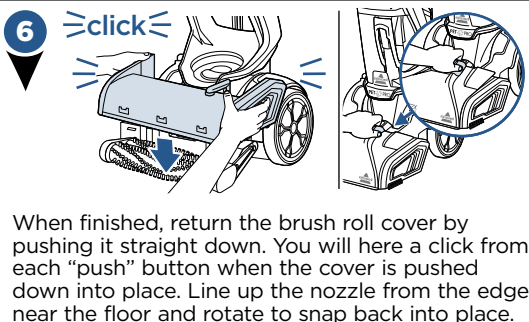
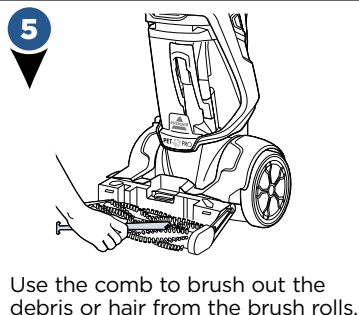
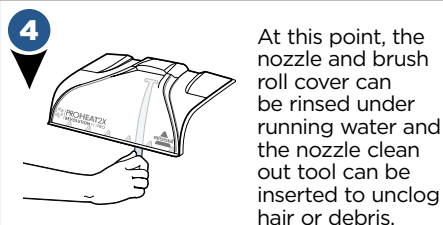
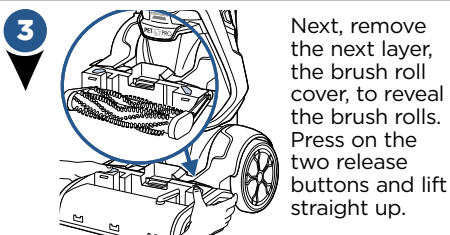
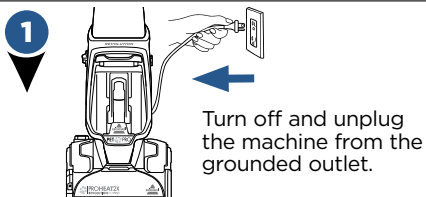
Wipe your machine's exterior with a soft cloth.

Brush Roll & Nozzle Care

WARNING

To reduce the risk of electric shock, turn power switch off and disconnect plug from electrical outlet before performing maintenance or troubleshooting checks.

NOTE: Be sure to clean the brush rolls and nozzle before storing your machine. Follow these steps if your nozzle becomes clogged with hair or debris.



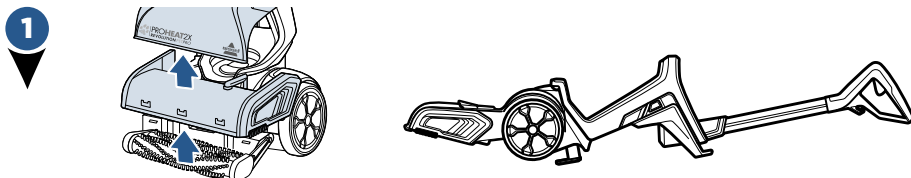
NOTICE: To reduce the risk of a leaking condition, do not store unit where freezing may occur. Damage to internal components may result.

Replacing Belts & Brush Rolls

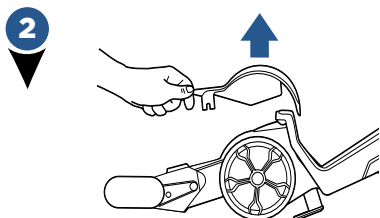
⚠ WARNING

To reduce the risk of electric shock, turn power switch off and disconnect plug from electrical outlet before performing maintenance or troubleshooting checks.

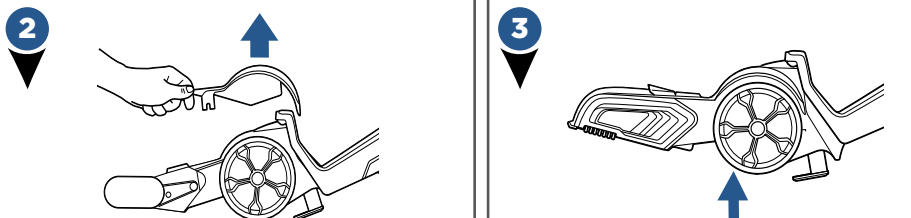
What you will need: 1 Phillips screwdriver & 1 flathead screwdriver



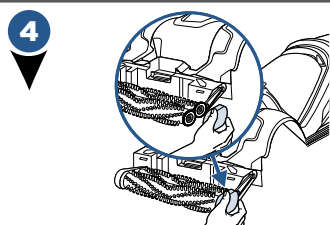
While the machine is upright, unplug the machine and remove both tanks. Remove the nozzle and brush chamber cover (see steps in Brush Roll & Nozzle Care). Press the recline pedal and lay the machine on its back.



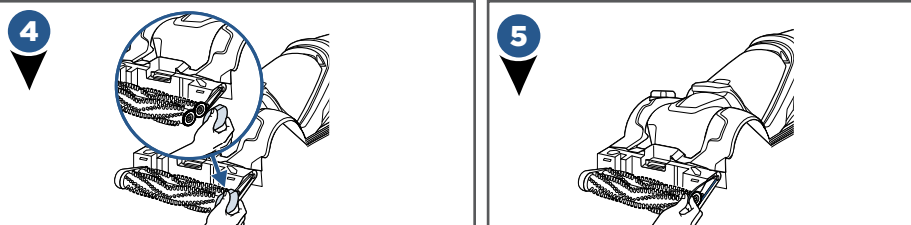
Use a flathead screwdriver and press it into the slot at the back **and then front** of the belt access door. Lift to remove the Belt Access Door.



Turn the machine on its side and use a Phillips screwdriver to remove the screw just underneath the wheel. Slide the wheel down to remove.



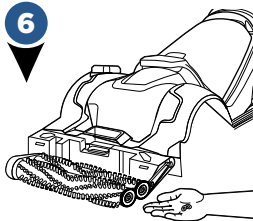
Lay the machine back down on its back. Use a Phillips-head screwdriver to remove the screw on the brushroll end cap.



If the Gear Belt is broken, gently remove it. If you are replacing your brush rolls, gently remove the belt.

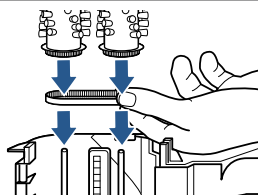
Replacing Belts & Brush Rolls (Continued)

6



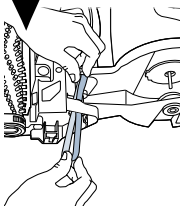
There are washers at the ends of the brush rolls, be careful that these do not fall off or get lost.

NOTE: To replace brush rolls, remove them from the metal posts and replace. Make sure the metal post goes completely through the end of the brush roll. The brush roll bristles should be aligned in a 'V' pattern as pictured.



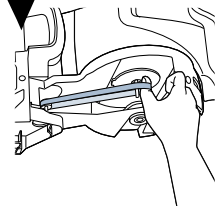
Align brush rolls with belt at other end. To ensure alignment, hold the end of one brush roll and twist. The other brush roll rotates with it. **Check that washers are in place.** Reassemble the belt and end cap, securing with screws you removed.

7



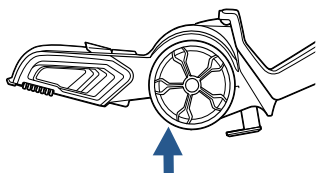
If the flat belt is broken, gently remove the belt. If it needs replacing for any reason, the gear belt should already be removed before removing the flat belt. Rotate the machine back to its side. Feed the new flat belt through the opening so that it wraps around the red pulley.

8



Keep it wrapped on the red pulley and adjust the machine so it is laying on it's back again. Use your thumb to stretch the flat belt back to wrap around the metal axle.

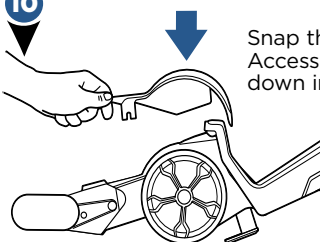
9



Resecure the Wheel and Belt Access Door:

Slide the wheel up back into the slot and secure with the screw that was removed.

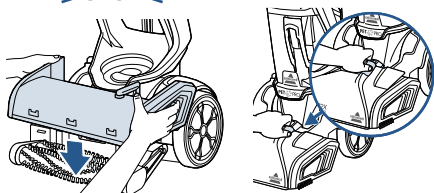
10



Snap the Belt Access Door back down into place.

11

≡click≡



When finished, return the brush roll cover by pushing it straight down. You will here a click from each "push" button when the cover is pushed down into place. Line up the nozzle from the edge near the floor and rotate to snap back into place.

Troubleshooting

WARNING

To reduce the risk of electric shock, turn power switch off and disconnect plug from electrical outlet before performing maintenance or troubleshooting checks.

Problem	Possible causes	Remedies
Reduced or No Spray Through Foot of Machine	Clean water tank may be empty	Refill tank
	Clean water tank may not be seated completely	Turn power OFF; remove and reseal tank
No spray through hose & tool	The hose to your machine is not primed or may have lost prime	<ol style="list-style-type: none"> 1. With the machine off and unplugged, remove the nozzle from the foot. Place a ball point pen in the black cylinder next to the screw. When water bubbles up, remove the pen. Reassemble the nozzle and hose 2. Hold end of hose below water level in tank to prime 3. With the clean tank full of water, the machine OFF and RECLINED, press the CleanShot® button ON and wait for the CleanShot® to drain for a few seconds; This will re-prime the machine
	Clean Water tank may be empty	Refill the Clean Water Tank
	Clean Tank may not be seated properly	Turn power OFF; Remove and reseal the clean water tank
No Spray Through CleanShot®	Clean Water tank may be empty	Refill the Clean Water Tank
	Clean Tank may not be seated properly	Turn power OFF; Remove and reseal the clean water tank
	The machine is not reclined	Press the Recline pedal and bring the handle down to recline the machine
	Pump may have lost prime	With the machine off and unplugged, remove the nozzle from the foot. Place a ball point pen in the black cylinder next to the screw; When water bubbles up, remove the pen; Reassemble the nozzle before cleaning again
CleanShot® Continues Spray When Machine is Off	CleanShot® button is not in the "OFF" position	Press the CleanShot® button to turn it off. The button window will show the color red and a "O" symbol when it is in the off position
Loss of suction power	Dirty tank may not be seated properly	Pick up the dirty tank and reseal so it fits in the unit
	Dirty tank has picked up maximum amount of dirty water and has reached full line	Empty dirty tank
	Rubber tab on dirty water tank is not sealed tight	Check the rubber tab on the dirty water tank and press firmly on all edges to secure it tightly (see step 4 on page 16 for detail)
	Accessory hose door may not be closed tightly in place	Check the accessory hose door and make sure it is closed tightly – it should be locked into place
	Nozzle may be clogged from pet hair or debris	Use the nozzle clean out tool and follow steps on page 17 for "Cleaning Nozzle"
	Brush roll cover not fully snapped into place	Remove the nozzle and brush roll cover; Follow step 6 from page 18 and make sure you hear both buttons click into place
No power	Cleaning mode switch mistaken for power button	Press the red power button on the left side of the machine to turn the machine on
	Outlet may not be active	Try plugging in a different device that uses a grounded outlet to test for power from the outlet
Leaking tank	Tank may have been over-filled	1. Make sure your tank has the water and formula in it that you've prepared
	Water may be caught in space between the tank and the tank's handle	<ol style="list-style-type: none"> 2. With the cap twisted ON tightly, hold your tank at an angle, over a sink or drain, so any extra water can pour out of the space 3. Wipe the tank dry with a cloth

Notes

Consumer Guarantee

This Guarantee gives you specific legal rights, in addition to rights you may have under the Australian consumer law. If you need additional instruction regarding this Guarantee or have questions regarding what it may cover, please contact your local BISSELL Consumer Services on the details set out below.

Limited 2 Year Guarantee (from the date of purchase by original purchaser)

Subject to the *CONDITIONS identified below, BISSELL will repair or replace (with new, refurbished, lightly used, or remanufactured components or products), at BISSELL's option, free of charge, any defective or malfunctioning part due to manufacturer defect. This Guarantee applies to product used for personal purposes, and not commercial or rental service. This Guarantee does not apply to fans or routine maintenance or consumable components such as filters, belts, brush rolls, etc., damage or malfunction caused by negligence, abuse, neglect, unauthorized repair, or any other use not in accordance with the user's guide. BISSELL recommends that the original packaging be kept for the duration of the Guarantee period in case such need arises within the Guarantee period that the item needs re-packing and transportation.

*CONDITIONS OF THE GUARANTEE

Subject to whether such loss is reasonably foreseeable, BISSELL and its in-country distributors are not liable for incidental or consequential damages of any nature associated with the use of this product.

FOR AUSTRALIAN CONSUMERS ONLY:

OUR GOODS COME WITH GUARANTEES THAT CANNOT BE EXCLUDED UNDER THE AUSTRALIAN CONSUMER LAW. YOU ARE ENTITLED TO A REPLACEMENT OR REFUND FOR A MAJOR FAILURE AND FOR COMPENSATION FOR ANY OTHER REASONABLY FORESEEABLE LOSS OR DAMAGE. YOU ARE ALSO ENTITLED TO HAVE THE GOODS REPAIRED OR REPLACED IF THE GOODS FAIL TO BE OF ACCEPTABLE QUALITY AND THE FAILURE DOES NOT AMOUNT TO A MAJOR FAILURE.

THIS GUARANTEE IS IN ADDITION TO OTHER RIGHTS OR REMEDIES UNDER LAW. NOTHING IN THIS GUARANTEE EXCLUDES, LIMITS OR MODIFIES ANY LIABILITY OF BISSELL WHICH IS IMPOSED BY LAW, OR LIMITS OR MODIFIES ANY REMEDY AVAILABLE TO THE CONSUMER WHICH IS GRANTED BY LAW. TO MAKE A CLAIM UNDER THIS GUARANTEE CONTACT BISSELL AUSTRALIA PTY LTD (DETAILS ABOVE). CONTACT BISSELL PRIOR TO RETURNING ANY GOODS. WHERE AGREED, BISSELL WILL REIMBURSE REASONABLE POSTAGE / HANDLING COSTS (IF ANY) FOR RETURNING GOODS TO BISSELL. TO CLAIM EXPENSES INCURRED IN MAKING A CLAIM UNDER THIS GUARANTEE PLEASE PROVIDE BISSELL WITH A COPY OF THE RECEIPT OF THE EXPENSES BY EMAIL OR POST.

Consumer Care

If your BISSELL product should require service or to claim under our limited guarantee, please contact us as follows:

Website and Email:

www.bissell.com.au

www.bissell.co.nz

Telephone:

Australia: 1300-247-735

New Zealand: 0800-247-735

Write:

BISSELL AUSTRALIA PTY LIMITED

42 Rocco Dr.

Scoresby 3179

Victoria

Australia

Replacement parts and accessories are available for purchase. To purchase visit www.BISSELL.com.au.

Visit the BISSELL website: www.BISSELL.com

When contacting BISSELL, have model number of cleaner available.

Please record your Model Number: _____ Please record your Purchase Date: _____

NOTE: Please keep your original sales receipt. It provides proof of the date of purchase in the event of a Guarantee claim. See Guarantee for details.



©2018 BISSELL Homecare, Inc.
Grand Rapids, Michigan
All rights reserved. Printed in China
Part Number 161-2209 02/18 RevB
Visit our website at: www.BISSELL.com

Scotchgard® is a trademark of 3M.
Ambia Pur™ is a registered trademark of The Procter & Gamble Company.
Cincinnati, Ohio used under license by BISSELL Homecare Inc.